



Adam Tas Corridor Energy

Grounding of metal conduit in distribution box





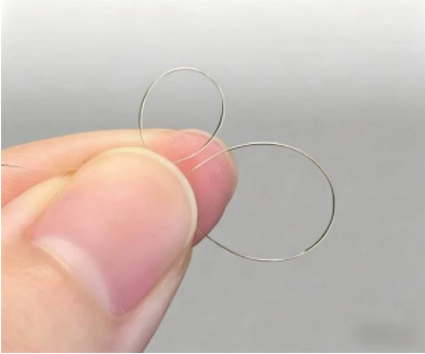
Overview

To safely ground a metal box, connect an equipment grounding conductor (typically a bare or green insulated wire) from the box to the main electrical panel's ground bus bar. Understanding how to ground metal electrical box components is not just about following code—it's about protecting your home and family. 7 Provide conduit grounding bushings, bonded together and connected to the equipment enclosure on all incoming and outgoing conduits on distribution switchgear and switchboards, distribution panels and on all conduits over 1-1/4" diameter at all panelboards, pull boxes and equipment. 26 mm² (10 AWG) ground wire must be used, and in all other markets a 6 mm² must be used.



Grounding of metal conduit in distribution box

7.5mm Radius

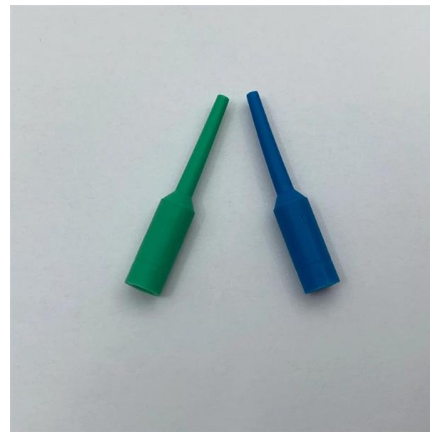


How to Ground Metal Electrical Box , 7 Easy Steps (2026)

Understanding how to ground metal electrical box components is not just about following code--it's about protecting your home and family. This guide

Practice for good grounding and bonding a home wiring

Bonding and grounding explained All home electrical systems must be bonded and grounded according to code standards. This entails two tasks: First,



How to Ground an Electrical Panel: A Complete Guide

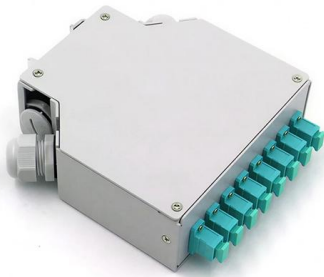
Learn how to ground an electrical panel step-by-step. Ensure safety, code compliance, and protect your home from electrical hazards.

2023 NEC Study Guide For "Service Grounding Basics"

Like many code topics, there are numerous NEC rules about the grounding of service installations.



As with most of the "complicated" code topics, our problems with these rules begin to disappear as we



How to Properly Ground a Metal Electrical Box

Ensure electrical safety. Learn the crucial steps for properly grounding metal electrical boxes to prevent shock hazards.

9 Recommended Practices for Grounding

Ensure electrical safety. Learn the crucial steps for properly grounding metal electrical boxes to prevent shock hazards.



NEC Basics: Connections and Continuity of Equipment

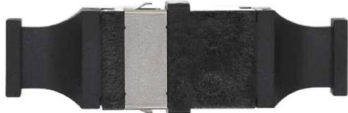
Connecting the receptacle grounding terminal to the metal box ensures an effective ground-fault current path. The basic rule achieves this





Grounding System Installation Standards for Distribution Boxes and

Whether you're a seasoned pro or just starting out, this comprehensive guide will give you practical insights into proper grounding techniques, with a special focus on how selecting quality materials



How To Ground A Metal Box - Essential Steps For DIY Electrical Safety

To safely ground a metal box, connect an equipment grounding conductor (typically a bare or green insulated wire) from the box to the main electrical panel's ground bus bar. Use a green

DISTRIBUTION BOX

Each DISTRIBUTION BOX and controller must be grounded. On the US market, a 5.26 mm² (10 AWG) ground wire must be used, and in all other markets a 6 mm² must be used.

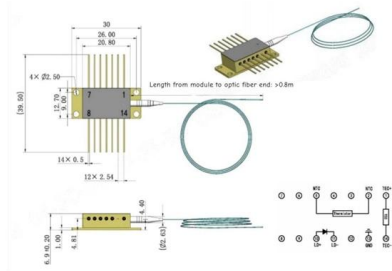


Industrial Automation Wiring and Grounding Guidelines

Mounting, Bonding, and Grounding After establishing all layouts, you can begin mounting, bonding, and grounding each chassis. Bonding is the connecting together of metal parts of chassis, assemblies,



Outline drawings
mm



IEEE 525-2007_accepted

1.2 Purpose The purpose of this guide is to provide guidance to the substation engineer in established practices for the application and installation of metallic and optical cables in electric power



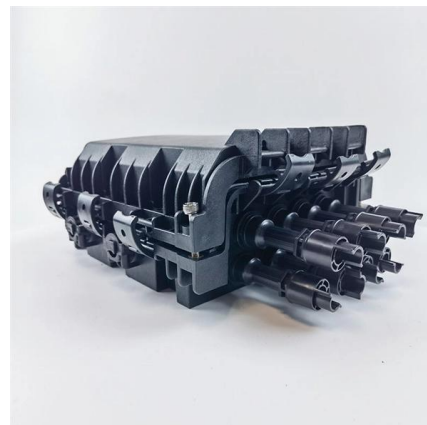
Properly grounding junction box for conduit transition

Metal conduit, tubing, and metal outlet boxes shall be connected to an equipment grounding conductor complying with the provisions of 250.86 and



Ensuring Proper Grounding: A Comprehensive Guide To Conduit

Learn how to ensure proper grounding with our comprehensive guide to conduit installation. Expert tips for safe and effective electrical systems.





GROUNDING AND BONDING FOR ELECTRICAL SYSTEMS

Connect the conductor from the panel ground bus or connector at the source to all items to which the conduits or raceways connect. Bond to a ground lug within each panel, box or equipment.

DUKE UNIVERSITY CONSTRUCTION STANDARDS 1

Grounding bus bars mounted exterior to electrical distribution equipment shall be provided with insulated standoffs. All service entrances shall be solidly grounded using a grounding electrode system



Grounding Practices in Power Distribution Systems

The installation of grounding methods for transmission lines is absolutely necessary in order to guarantee the safety, dependability, and effectiveness of power

NEC 2023 Basics: Equipment Grounding Conductors

The NEC recognizes that a listed liquid-tight flexible metal conduit of trade size 1 1/4" and smaller, not exceeding 1.8 m in length, works as a grounding



TECH TALKS

In order for steel conduit and EMT to perform effectively as equipment grounding conductors, it is crucial that they are installed properly with tight joints. If a fault occurs, this helps ensure a continuous, low

GROUNDING AND BONDING FOR ELECTRICAL SYSTEMS

3. CONSTRUCTION REQUIREMENTS 1.7 Provide conduit grounding bushings, bonded together and connected to the equipment enclosure on all incoming and outgoing conduits on distribution



Steel Conduit Tech Talk: Grounding , Steel Tube Institute

This research represented the first update on the impedance and permeability of steel conduit in over 40 years. The first phase of the grounding research at



250.148 Continuity of Equipment Grounding Conductors

(C) Metal Boxes. A connection used for no other purpose shall be made between the metal box and the equipment grounding conductor (s). The equipment bonding



Grounding Basics

Ground wires (equipment grounding conductors) connect to every part of the electrical system that could possibly become energized--metal boxes,

Contact Us

For datasheets, pricing, or custom telecom energy solutions, please visit:
<https://koskolong.co.za>