



**Adam Tas Corridor Energy**

# **Guangyu Battery Module Parameter Settings**





## Overview

---

On the home screen, choose Set > Battery Parameters and set related parameters. This document provides common troubleshooting cases for Huawei Smart PV solutions and products, helping engineers and users to handle common faults. EMUS Battery Management System utilizes a CAN interface, which is mainly used for control of a CAN-based charger or for cell communication (when CAN Cell Group Modules are used), but can optionally be used for retrieval of various information, control of certain features, and configuration of EMUS. PV power is preferentially supplied to loads, and the surplus PV power is used to charge the battery. Setting the battery type and hybrid scenario If lithium batteries and lead-acid batteries are used together, set Battery Vendor and Battery Model based on the lead-acid battery specifications.



## Guangyu Battery Module Parameter Settings

---



### Can't Change Battery Parameter Settings

I'm following this guide ( [Redirecting to latest version of document (main)]) and literally just trying to get the basic battery settings configured just to

### Common Power Module -- Copter documentation

Instructions for setup and calibration using the Mission Planner can be found here A Blog post with instructions for set-up using QGC can be found here Dual Battery

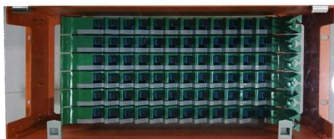
### More durable and robust

The outer layer is made of environmentally friendly PVC, which is soft and elastic. It can be stretched without damage , so you can use it with confidence.



### Smart PV Troubleshooting Guide

Built with a dual-engine of Fast Thinking + Deep Thinking, it allows users to switch seamlessly between agile dialogue and complex reasoning. No multi-platform switching is required.



### Config Guide(ArduPilot) · CAN PDB

Change parameters Connect the autopilot to the Mission planner ground station, open the Configuration > Optional Hardware >



### Battery-Box Premium 16.64 Quick Reference Guide

This document contains safety information and instructions, scope of delivery, battery system overview, installation, electrical connection, commissioning, operation, decommissioning, extension,

### Changing Operating Parameters

Function-sensitive parameters are only visible to qualified persons and can only be changed upon logging in as Installer. These parameters are designated in the user interface with a locked padlock.



### Battery Parameters

The peak shaving function is unavailable when the battery working mode is set to Fully fed to grid. If the peak shaving function has been enabled but you need to use Fully fed to grid, disable the peak



## Setting Battery Parameters

On the home screen, choose Set > Battery Parameters and set related parameters. Specifies the quantity of battery packs. Specifies the insulation resistance protection threshold. After you enable



## Power Setup , QGC Guide (4.3)

Power Setup The Power Setup screen is used to configure battery parameters and also provide advanced settings for propellers. Battery Voltage/Current Calibration Enter data for your

## Setting Battery Parameters (Lithium Battery + Lead-Acid Battery)

Setting Battery Parameters Setting Battery Parameters (Lithium Battery + Lead-Acid Battery)



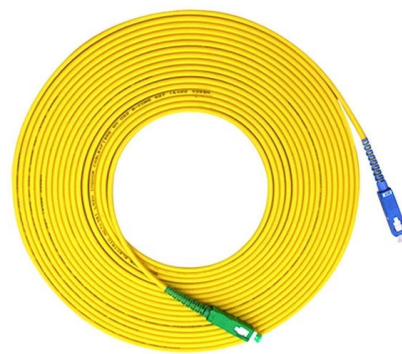
## Setting Battery Control

Setting Battery Control Connect to the inverter, choose Power adjustment > Battery control on the home screen, and set related parameters.



### Regarding settings when the battery is installed , FAQ , MITSUBISHI

Use the following procedure to display the Optional Battery Settings. From the GX Works3 navigation pane, click Parameters > Module Name > CPU Parameters > Memory/Device Settings >



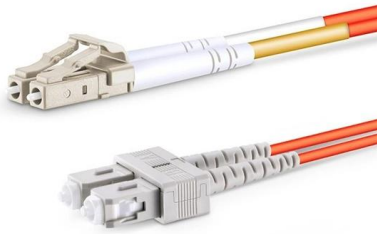
### How to set LiFePo4 Battery Parameter for Eco Worthy 24v 3000w

How to set LiFePo4 Battery Parameter for Eco Worthy 24v 3000w and 48v 5000w, Renogy and Midnite AIO Gary Gary 557 subscribers Subscribe

### Analog Power Module Setup

Power Module & PDB Power Module Analog Power Module Setup PX4 QGroundControl Setup Connect the Power Module to a battery and connect the



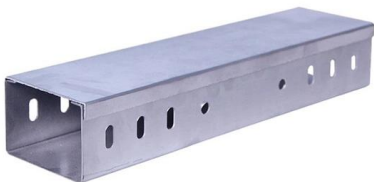


## Battery Parameters

Battery parameter settings Table 15-1 Battery parameters Table 15-2 Battery working modes Table 15-3 Running parameters in each battery working mode Table 15-4 Forced charge/discharge

## EMUS G1 Control Unit CAN Protocol

Using this method, individual cell module temperatures of the battery pack can be retrieved from EMUS BMS in series of CAN messages, each of them containing cell module temperatures of a group of 8



## Setting Battery Control

Connect to the inverter, choose Power adjustment > Battery control on the home screen, and set related parameters. Set this parameter to Maximum self-consumption. PV power is preferentially supplied to

## Setting Battery Parameters (Lithium Battery + Lead-Acid Battery)

These parameters are displayed when Battery Model is set to a lead-acid battery model. The float charge voltage should be lower than the equalized charge voltage. The equalized charge voltage



## G1 Battery Management System Manual

The maximum value of the battery capacity using some type of cell module depends on the battery pack cells quality, lifecycle, grading/sorting, temperature control, and other factors.



## Power Setup , QGC Guide

Power Setup The Power Setup screen is used to configure battery parameters and also provide advanced settings for propellers. Battery Voltage/Current Calibration Enter data for your



## HOW TO SETUP SMART DALY BMS

In this video, we'll walk you through: Step-by-step instructions on how to set up the Smart Daly BMS Parameter settings for optimal performance and safety How to connect and monitor your BMS via





## Battery-Pack-Model-Simscape/Overview/batteryModuleDoc

Battery pack model for thermal management tasks, with modules of cells in series and parallel.  
- mathworks/Battery-Pack-Model-Simscape

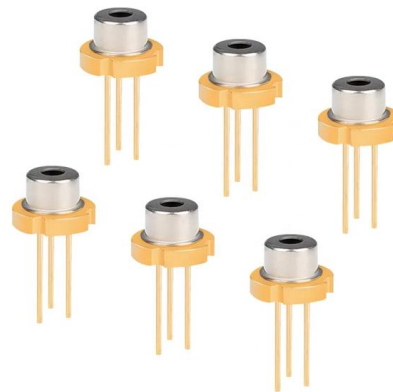


## How to access and change parameters of a battery with an

How to access and change parameters of a battery with an unknown Smart Inverter BMS  
Roland W 4.1K subscribers [Subscribe](#)

## BMS parameters

I'm interested and curious with the parameter settings for the BMS. Will only updating the capacity and nominal capacity on the app be sufficient? Can I tweak a few things to make it balance



## Battery module parameter settings. , Download Scientific Diagram

battery pack module uses KULI's own module, and the module parameter and the battery pack structure are set as shown in the following Figure 3 and Table 1.



## Setting Battery Parameters

Connect to the ESS. On the home screen, choose Set > Battery Parameters and set related parameters. Table 8-4 Battery parameters Translation Favorite Download Update Date:2026-01-31 Document



## Can't Change Battery Parameter Settings

I have a 6S LiPo battery hooked up to a power module and the following Control Zero F7 pins: . I'm following this guide ([Redirecting to latest

## Setting Battery Control

Setting Battery Control Connect to the SmartLogger, choose Power adjustment > Battery control on the home screen, and set related parameters.





## Contact Us

---

For datasheets, pricing, or custom telecom energy solutions, please visit:  
<https://koskolong.co.za>