



Adam Tas Corridor Energy

H3C High-End Core Switch





H3C High-End Core Switch

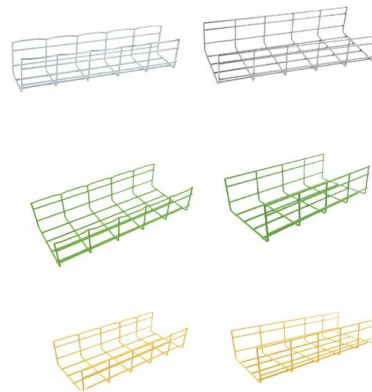


Product Iteration Summary of Data Center Switches-H3C

H3C UniServer R6900 G6 Tops SPEC Performance Test H3C UniServer R6900 G6 server, running a full load of 777 high-load virtual machines, achieved a performance score of 13,880

Switches

These switches integrate seamlessly with H3C's broader ecosystem of routers, security solutions, and cloud platforms. The H3C S5850 and S6800 series switches are advanced, high-density Ethernet



H3C

With a range spanning ten series and hundreds of switches, H3C's options can cover your networking needs - from the data center core to campus access and remote

H3C S7500X-G Series

H3C S7500X-G series is a family of high-end multiservice routing switches intended for multiservice networks. It runs an operating



system that boasts virtualization technologies such as Intelligent



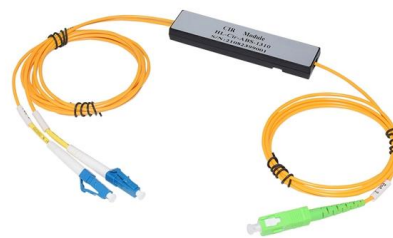
H3C S12500G-AF Data Center Intelligent Core Switch

S12500G-AF series switches support IRF2 technology, virtualizing up to 4 high-end devices into one logical device, which has powerful advantages in reliability, distribution and ease of management.



H3C S6550X-56HF-HI Review: 48x25G + 8x100G Campus / Data

What it is: A high-density switch built for 25GE access + 100GE/40GE aggregation, commonly used as campus core / building distribution or a data center leaf (ToR).



h3c

Overview The H3C S12500 DataCenter Cloud Core Switch Series is designed for cloud services data centers. It provides the following features:



H3C Switches Price , Switches

H3C Switches Features and Advantages: H3C switches offer robust security, intuitive management, and energy efficiency. They are designed for high performance and scalability, making them ideal for



H3C S7500X-G Series High-End Multiservice Routing Switch-H3C

H3C S7500X-G is a high-end multiservice routing switch series designed to deliver exceptional service convergence experience. It supports a wide range of integrated capabilities, including the integration

The leader in digital and AI solutions-H3C-H3C

Tech magazine published by H3C, integrating cutting-edge insights and breakthrough innovations shaping the future of AI. H3C, a leading provider of



H3C S7503X Series Enterprise Core Switches

H3C's S7500X series switches are designed for use at the core of next-generation enterprise networks.



H3C S10508X-V Core Switch S10500 Series Chassis

H3C S10508X-V Overview Introducing the H3C S10508X-V, part of the powerful H3C S10500 Series Core Switches. Designed for enterprise-level networks, this switch



H3C S9850 Series Data Center Switches-H3C

H3C S9850 high-density intelligent series switches is developed for data centers and cloud computing networks. It provides powerful hardware forwarding capacity and

H3C 7503E-M Series Enterprise Core Switches

The S7500E series has become one of the best-selling product series since its release nine years ago; The update of the proprietary H3C operating system from



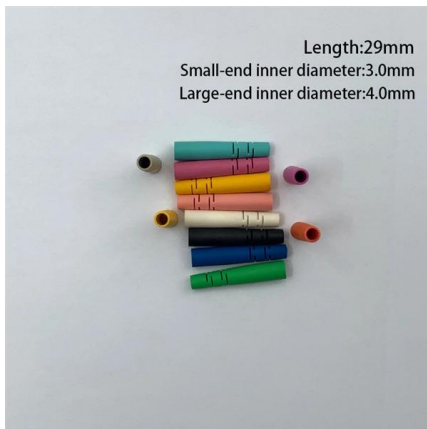
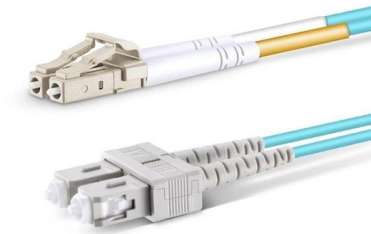


Switches-H3C

H3C industrial switches can operate in -40°C - 75°C environments for a long time, and use industrial components to reach IP40 rating. At the same time, with

h3c

MDC virtualizes one S12500 switch into multiple logical switches, enabling multiple services to share one core switch. The 1:N virtualization maximizes switch utilization, reduces network TCO, and



H3C S7600E-X Series Carrier-Grade High-End Router Switches

The H3C S7600E-X series switches are core switching products specifically designed and developed by H3C Technologies Co., Ltd. (hereinafter referred to as H3C) for cloud computing

Products & Technology

With a range spanning ten series and hundreds of switches, H3C's options can cover your networking needs - from the data center core to campus access and remote



H3C S10500X-G Series Next Generation Core Switch-H3C

H3C S10500X-G is a high-end Switch series designed for the core layer in intelligent Campuses and Data Centers. Powered by the H3C COMWARE 7 network operating system, the S10500X-G offers



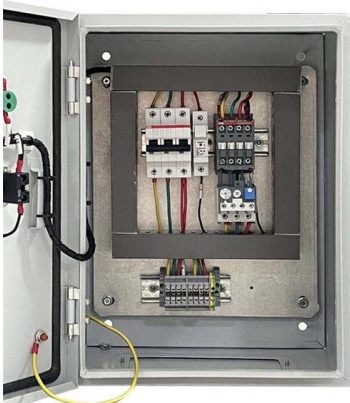
Switches

Data Center Switches Ultra-Wideband, Simple, and Intelligent Integration Providing scalable, intelligent, and fully visualized solutions, these products are designed for diverse cloud data center scenarios,



H3C S6550X-HI Series High-Density Intelligent Switch-H3C

High Port Density and Powerful Forwarding Capacity The switch offers high-density 100G/40Gports and a forwarding capacity as high as 6.4Tbps, which enables the switch to provide high-density server





H3C S7500X-G Series

Overview H3C S7500X-G series is a family of high-end multiservice routing switches intended for multiservice networks. It runs an operating system that boasts virtualization technologies such as



H3C Switches Price , Switches

H3C switches offer robust security, intuitive management, and energy efficiency. They are designed for high performance and scalability, making them ideal for various network environments. Additionally,

H3C S12500G-AF Data Center Intelligent Core Switch-H3C

H3C S12500G-AF is H3C's new generation of AI intelligent switches for the core scenarios of data centers, providing the industry's highest switching. It provides the following features: CLOS+ multi



H3C S6520X-EI Series Enhanced 10GE Switches-H3C

H3C S6520X-EI Series Switches--Industry-leading high performance and scalable 10GE access switching solution developed by H3C using ASIC technology with modular dual power, fixed or



H3C S7503X Series Enterprise Core Switches

H3C's S7500X series switches are designed for use at the core of next-generation enterprise networks. They feature a modular design, run the proprietary H3C Comware V7 operating system and offer the



Computing-H3C

Servers Overview H3C intelligent computing provides application-driven, full-stack and full-scenario solutions and products, including rack servers, blade servers, tower servers, high-density servers,

H3C S10500X Series Multiservice Core Switch-H3C

H3C S10500X series switch is designed for the core layer of data centers and next-generation campus networks as well as the distribution layer of MANs. It provides the following features:



H3C S10500X Series Multiservice Core Switch-H3C

H3C S10500X series switch is designed for the core layer of data centers and next-generation campus networks as well as the distribution layer of MANs. It provides the following features:
Advanced



H3C S7500X Series

Overview The H3C S7500X series switch is designed for the next-generation enterprise core networks. It adopts modular design, uses H3C's proprietary operating system Comware V7 and



Contact Us

For datasheets, pricing, or custom telecom energy solutions, please visit:
<https://koskolong.co.za>