



Adam Tas Corridor Energy

High Voltage Busbar Transition Cabinet





High Voltage Busbar Transition Cabinet

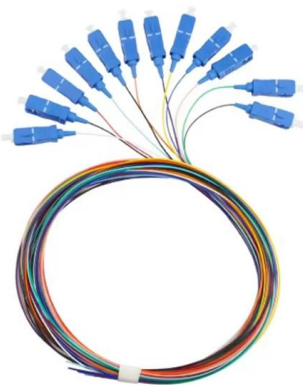


FLEXIBLE COPPER BUSBARS, ERIFLEX, FLEXIBAR,

Copper busbars are used as heavy power shunt interconnects to overcome vibration and alignment problems - flexible busbars are available with a choice of

High-Voltage Termination Cabinets , Hardcraft

Hardcraft's Termination Cabinet solution is an expertly-engineered, fully featured enclosure designed for high-voltage applications. Features include: Easy



Abtech Busbar Box Hazardous Area (ATEX) Electrical

Abtech Busbar Box Hazardous Area (ATEX) Electrical Enclosure Abtech Busbar Box HV Electrical Enclosures & Junction Boxes ATEX, IECEx & InMetro Certified &

Vertiv(TM) PowerBar HPB

Vertiv(TM) PowerBar HPB is a 1000V totally encased, non-ventilated and low impedance busbar. HPB sandwich construction range has



been engineered for



Bespoke Busbar Systems

A busbar is an element you will find housed inside switchgear, panel boards and busway enclosures for local high-current power distribution. When package



Vertiv(TM) Powerbar , Busway and Busduct

Vertiv's portfolio of busways and busbars provide a complete power distribution solution. Unlock the full potential of your existing and upcoming data center by



Busbars for High-Voltage Power Systems: The Key to

Busbars are indispensable components of high-voltage power systems, ensuring efficient and safe power transmission. Selecting and utilizing





Busbars and Connectors in HV and EHV installations

What is an Electric Busbar? An electric busbar is a conductor or set of conductors designed to collect electrical power from incoming feeders and distribute it to



Electrical cabinet busbar

Electrical cabinet busbar, also known as electrical cabinet busbar, plays an extremely important role in the electrical system, such as the "heart" that

Distribution Solutions , Hardcraft

We provide a complementary range of bus bars, all fully CNC-machined in-house. Cabinet offers maximum flexibility, accommodating three multipoint junctions,



Technical Requirements of Busbars And Current Carrying Parts of LV

All busbars and current carrying parts shall be manufactured to carry a current density of not more than 1.55 A/mm² and shall be capable of carrying normal current continuously without the temperature rise



Modular High Voltage Switchgear Cabinet

A key highlight of this high-voltage switchgear lies in its versatile busbar system: built on a single busbar foundation, it offers exceptional



Busbars , Busbars manufacturers & supplier , Eaton

Busbars are metal bars that can be composed of numerous alloys but are most commonly copper or aluminum. Typical busbar applications include switchgear,

Busway , ABB Electrification U.S.

NEMA defines a busway as a prefabricated electrical distribution system consisting of bus bars in a protective enclosure, including straight lengths, fittings, devices and accessories. In electric power



Application of electrical busbar in High Voltage Cabinets

This article provides a comprehensive guide to the application of electrical busbars in high voltage cabinets, covering their importance, design considerations, and future trends.



Flexible tiered busbar enclosure for high current application

This high-current enclosure offers enhanced flexibility using a range of tinned copper busbars mounted in a tiered arrangement. The SX busbar provides termination



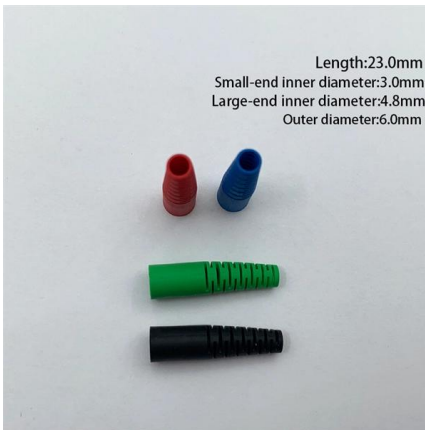
Flexible tiered busbar enclosure for high current application

The arrangement of busbars in this enclosure can be tailored, allowing a variety of configurations suitable for inflexible, higher-current carrying cables. These are

High Voltage Busbars

Learn how TE's high voltage insulators provide robust, light-weight support for pantographs, busbars and other high voltage electric equipment on locomotives, multiple units and high speed trains.





How to Install HV/LV Switchgear: Full Process & Global

Master high & low voltage switchgear installation with this expert guide. Learn unboxing, setup, busbar connections, and global standards for

What are the components inside the high-voltage distribution cabinet?

Busbar is a conductor responsible for collecting and distributing electric energy in a high-voltage distribution cabinet. Like blood vessels in the human body, it closely connects various



Copper Flexible Busbar For High Voltage Distribution Cabinet

Discover high-quality Copper Flexible Busbars designed for high voltage distribution cabinets. Enhance your electrical systems with reliable performance and durability



Bussed CT Cabinets, Termination Cabinets, Disconnect

Bussed CT Cabinets, Termination Cabinets, Disconnect Combos Milbank is pleased to announce high-amperage Current Transformer (CT) cabinet additions to our



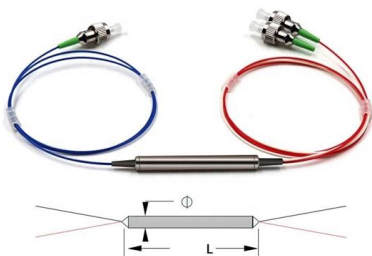
Industrial Power Distribution Solutions

The RiLine and RiLine Compact busbar systems provide mission-critical all-around contact protection for a safer manufacturing environment on the production floor



Distribution Solutions , Hardcraft

Hardcraft offers the finest in termination cabinets, medium-voltage fuse cabinets, switch cabinets, junction cabinets, sectionalizing enclosures, and related pad



"Busbar Systems"

Black start/dead busbar detection: 10 V (maximum busbar voltage at which a live outgoing / incoming feeder can be connected to the busbar) -the aforementioned conditions apply at higher voltages.



A Guide to Electrical Busbars: Common Uses & Design

Most busbar configurations are not insulated to improve convective cooling and allow easy access for new connections. Since most busbars work with higher-voltage



Busbar enclosure for temporary power & high current

Hazardous Area Busbar enclosure for 3kA
Designed to accommodate inflexible high current cables, the BusBar Box can safely terminate conductors up to 3200 amps



Bespoke Busbar Systems

When package substations are required, the transformer within can be connected directly to the main LV switchgear via high-powered busbar systems that are



Busbar Fabrication: Techniques for Efficient Assembly

This article delves into the intricate processes behind busbar fabrication, detailing the techniques and tools necessary for efficient assembly.





Contact Us

For datasheets, pricing, or custom telecom energy solutions, please visit:
<https://koskolong.co.za>