



Adam Tas Corridor Energy

Horizontal cable tray to vertical cable tray connector





Horizontal cable tray to vertical cable tray connector



Cable Tray Spacing Standards for Installation and Safety

Key Factors Impacting Cable Tray Spacing
Understanding cable tray spacing is key to meeting safety regulations and maintaining system

Fiberglass Cable Tray Horizontal Adjustable Bends

All types and widths of tray are available as fittings with the Cope-GLAS Cable Tray System. All fittings are pre-drilled at the factory to accept splice plate fasteners.



Cable Tray Orientation and Fittings

To connect a horizontal cable tray segment with a vertical one requires the latter to be precisely oriented so that the elbow will line up properly with both. This is

Thomas & Betts Helix Cable Tray Transition Fitting

The latest evolution in cable tray fittings, the Helix(TM) fitting assembly was developed



specifically for use in confined areas and allows installers to



Helix fittings from Thomas & Betts ease transitions

The cable tray helix fittings from Thomas & Betts (T& B) ease transitions between horizontal and vertical cable tray runs, especially in confined areas and

PRODUCT INFORMATION

We have more than a decade's worth of experience making and designing quality cable tray and cable management systems. Our knowledgeable production team works closely with each customer to



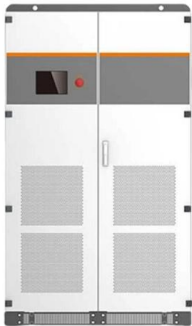
CABLE TRAY SYSTEM

The Vantrunk Heavy Duty Return Flange cable tray vertical adjustable coupler is the standard means of allowing vertical adjustment between adjacent lengths of cable tray and is available in the full range



CableTray Book English db

Horizontal cross A cable tray fitting that is suitable for joining cable trays in four directions at 90° intervals in the same plane.

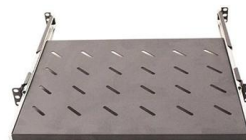


Cable Tray Connectors , McMaster-Carr

Choose from our selection of cable tray connectors, including cable and hose trays, steel formable cable and hose trays, and more. Same and Next Day Delivery.

CABLE TRAY SYSTEM

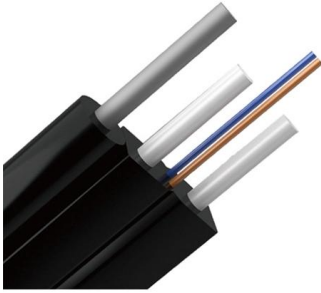
The vertical adjustable coupler features easi-bend slots which allow the couplers to be adjusted on site to create combined horizontal & vertical offset connections, tray connections onto the side of a cable



Webit Cabling

CABLE TRAY ADJUSTABLE CONNECTOR

Quest offers a full line of cable tray accessories. This accessory is for the secure joining of vertical cable trays. Color Length Height Width Weight
Silver 10" 0.75"



Horizontal vs. Vertical: Best Cable Management System

This article explores the pros and cons of both horizontal and vertical cable management systems and discusses when each option is most suitable.



Cable Tray Technical Guide A practical guide to product selection and

In designing supports for a cable tray system, consideration should be given to the loads associated with future cable additions and any additional loading that may be applied to the cable tray system (e.g.,



Heavy Duty Flat Vertical Adjustable Coupler - Vantrunk

The Vantrunk Heavy Duty flat vertical adjustable coupler is the standard means of allowing vertical adjustment between adjacent lengths of cable tray and is





Pentax Ferro Incorporate

Pentax cable support systems consisting of wide range of Cable trays (Ladder & Perforated) with accessories including supports (for ceiling, wall mounting & floor



INSTALLATION GUIDE

Vertical cable tray elbows at the top of runs should be supported at each end. At the bottom of runs, they should be supported at the top of the elbow and within 610 mm (24") of the lower extremity of the



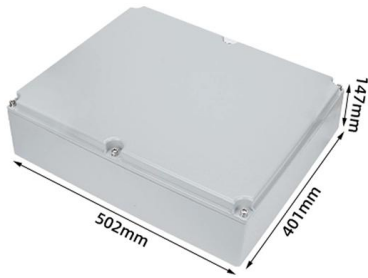
Adjustable connector , OBO

Adjustable connector Filter Width Suitable for cable tray system height Height Material Surface

How to connect a horizontal cable tray with a vertical

A new connector is added in the middle of the horizontal cable tray, and its ConnectorType value is "Curve". The new connector is connected to one



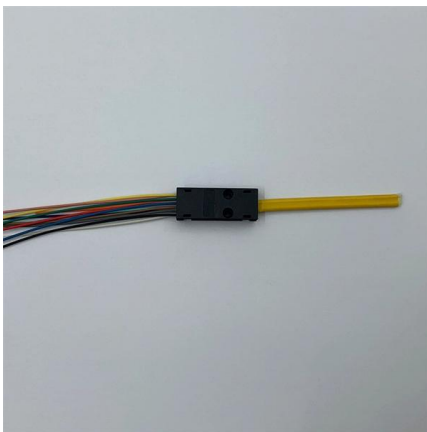


CABLE TRAY, CABLE LADDER, CABLE TRUNKING CATALOGUE

corresponding to the straight cable tray sections. These fittings are including: elbow, horizontal cross, vertical inside riser, reducers, cover clip, joint connector, horizontal

Heavy Duty Flat Vertical Adjustable Coupler - Vantrunk

The vertical adjustable coupler features easi-bend slots which allow the couplers to be adjusted on site to create combined horizontal and vertical offset connections,

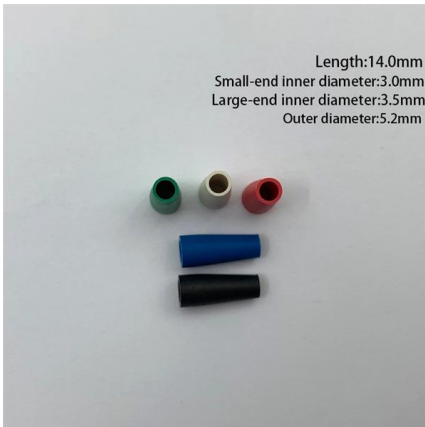


Cable Tray Technical Guide A practical guide to product selection and

Cable Tray Technical Guide A practical guide to product selection and installation This guide for engineers and installers has been developed by ABB as a practical reference regarding cable tray

Cable Tray Vertical Hinge , Trayco

Cable Tray Vertical Hinge CT-VH Connect with BN06-10 Coated finishing available on demand. RAL colour code to be confirmed on your order.



Mesh cable tray systems

4 1 Product description OBO mesh cable tray systems stand out through their high load capacity and good ventilation. They can be used universally. The mesh cable trays are suitable for the installation

VANTRUNK Cable Tray, Heavy Duty Return Flange,

The vertical adjustable coupler features easi-bend slots which allow the couplers to be adjusted on site to create combined horizontal & vertical offset connections,



Wire Mesh Cable Tray

WM wire mesh cable trays are ideal for commercial and data center cable management, providing a flexible way to adjust your cable trays to suit your job site applications. It can easily modify the



Contact Us

For datasheets, pricing, or custom telecom energy solutions, please visit:
<https://koskolong.co.za>