



Adam Tas Corridor Energy

How large or how many KVM switchers should be installed





Overview

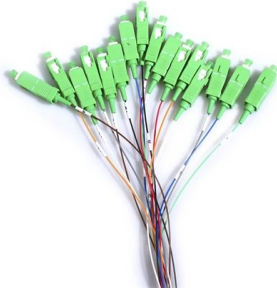
The right KVM switch depends on how many computers you manage, whether you need dual-monitor support, and what USB speeds your peripherals require. Choosing the right number is essential to ensure efficient workflow and optimal performance in environments ranging from home offices to large data centers. Control multiple computers with one keyboard, mouse, and monitor using our recommended KVM switches, with setup guides, troubleshooting tips, and security considerations for work and home office environments. Last Updated: October 1, 2025 KVM switches let you control multiple computers with one. Learn KVM basics, key features, use cases and the questions to ask to choose the right solution for your needs. KVM-over-IP Switches provide flexible, local and multi-user IP access of 8 to 64 computers, that scales to thousands of computers via Raritan's Centralized Access and Management System. A dual-monitor gaming PC, a MacBook with USB-C video output, a workstation using DisplayPort monitors, and a laptop connected to a Thunderbolt-enabled display can require very different switching paths.



How large or how many KVM switchers should be installed

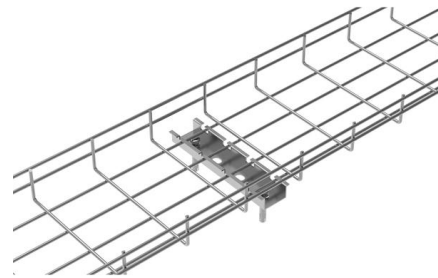
Too Many KVM Switches? Here's How to Find the Right One

Discover five essential factors to consider when selecting the ideal KVM switch for your needs.



Understanding KVM Switches

Learn about KVM switches, their features, types, and how they can improve your business efficiency. Understanding their working and benefits allows you to control multiple computer systems



Best KVM Switches for 2026 (Dual Monitor, Multi-PC)

The right KVM switch depends on how many computers you manage, whether you need dual-monitor support, and what USB speeds your peripherals require. Four-port switches work well

KVM Switches Selection Guide: Types, Features, Applications

KVM switches with a serial port provide serial switching capabilities. Devices that are hot



pluggable allow IT personnel to connect computers, keyboards, monitor and mice while a switch is in use. Plug



KVM Switch Buying Guide

KVM switches differ in the number of computers they can control, ranging from two to 64 directly connected computers. Enterprise-level KVM switches can also be

KVM Switches Buying Guide , AZE

How many computers do you want to control from a single KVM Switch? KVM Switches are available with up to 32 ports for controlling up to 32 directly connected computers.



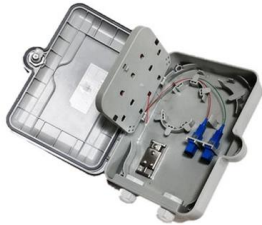
12 Best Monitors with KVM Switch 2026 Expert Reviews

Discover the best monitors with built-in KVM switches after testing 12 models for 400+ hours. From 27" 4K to 49" ultrawide, find your perfect multi



What is a KVM Switch Used for and How Does it Work?

As a fellow Linux enthusiast, you've likely wondered about the purpose of those little boxes labeled "KVM switches" during your server room



How to Select KVM Switches

Discover key insights for selecting the optimal KVM switch to manage your IT operations effectively. Learn about crucial considerations such as

How to Set up Your New KVM Switch : Step by Step

Setting up a KVM (Keyboard, Video, Mouse) switch allows you to control multiple computers using a single set of peripherals. Here's a step-by-step



KVM switch

A KVM switch (with KVM being an abbreviation for "keyboard, video, and mouse") is a hardware device that allows a user to control multiple computers from one or



Too Many KVM Switches? Here's How to Choose the Right One

The number of controllable PCs indicates how many computers a KVM switch can manage, affecting its suitability for different setups. Choosing the right number is essential to ensure efficient workflow and



Everything You Should Know Before Buying a KVM Switch

This article describes FAQs about KVM switches. This content can help you better understand KVM switches in order to make the right purchase

4 Things You Should Know about Dual Monitor KVM HDMI

kvm 4 Things You Should Know about Dual Monitor KVM HDMI's Posted on October 28, 2024 by David Javier Many of our clients require a Dual Monitor KVM HDMI for use at work or in their homes. Say,



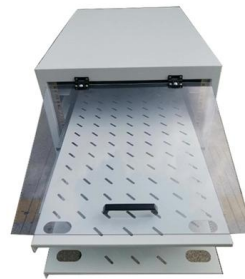
KVM Selection Guide

The table below summarizes the types of KVM switches, from enterprise wide IP access to the extension of a single computer. Look at the Typical Applications column for the type that best matches your



What Are KVM Switches and When Should You Use

The problem with using two or more computers is that it is expensive, takes up much space, and is hard to cable manage. A KVM switch can make

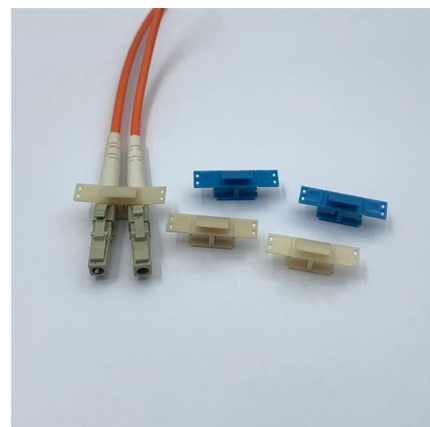


A Beginner's Guide to KVM Switch , Simplify Your Setup

Learn how to choose the right KVM switch for your monitor setup. Here is the complete guide for KVM, its types & best buying considerations.

KVM over IP Matrix System Implementation Guide

Choose a switch that has enough ports to match the number of KVM over IP Extenders you will be installing. Switches typically come in 5, 8, 10, 16, 24, 28, 48, and 52-port configurations.





Top 6 Considerations When Choosing a KVM Switch

A KVM switch provides a quick and cost-effective way to access several PCs with just a single monitor, keyboard and mouse. It can save more

What Should You Know About KVM Switches?

Conclusion KVM switch is a powerful assistant in daily life with its remarkable functions. Knowing what it is, why, and how to use it is important for



Article: How to choose the right KVM?

To find the proper KVM switch for your needs, start by laying down the number of computers and monitors you need to connect. This will help you determine the right type of KVM switch.

The Ultimate Guide to Choosing the Right KVM Switch

The number of ports on a KVM switch determines how many computers or servers you can connect. Basic models support 2 to 4 computers, while advanced enterprise-grade KVM switches can handle



KVM Switch Multiple Monitors -5 Things You Must Know

How to choose the best KVM switch multiple monitors for your dual or triple monitor setup? Get expert recommendations and setup tips for a seamless



Everything You Need to Know About KVM Switches

A KVM switch is a hardware device that allows users to control multiple computers or servers in one or between several monitors using a single



Types of KVM Switches Explained: How to Choose the Right TESmart KVM

A single-monitor office KVM, a dual-monitor gaming KVM, a rackmount-style 16-port KVM, and a KVM compatible with Thunderbolt(TM) 4 laptops are built for different problems. This guide





How to Set Up a KVM Switch Step by Step?

This is a short guide to help you set up a KVM switch step by step and more resources are given for further reading.



Ultimate Guide to KVM Switches , Everything You Need to Know

Desktop KVM switches are compact devices that allow a user to access two, four, eight, or 16 computers from a single user console eliminating the need for extra peripherals, while providing faster access to

KVM Switch Buying Guide 2026: How to Choose the Right TESmart

Learn how to choose the right KVM switch in 2026 by matching computer count, monitor setup, HDMI/DisplayPort/USB-C needs, refresh rate, Mac compatibility, EDID stability, and TESmart



How to Set Up a KVM Switch: Detailed Step-by-Step Guide

Step-by-step guide to set up a KVM switch for seamless multitasking. Learn how to connect devices, monitors, and peripherals for efficient use.



Contact Us

For datasheets, pricing, or custom telecom energy solutions, please visit:
<https://koskolong.co.za>