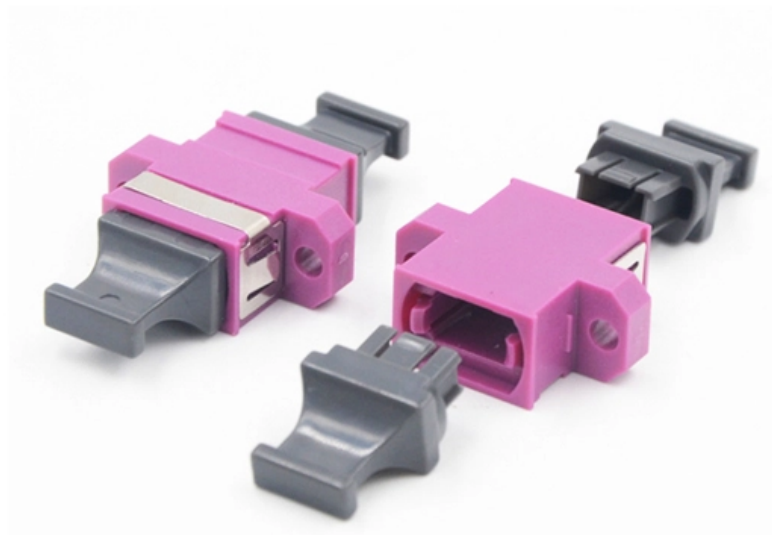




**Adam Tas Corridor Energy**

# **How many cables can a 200x100mm cable tray carry**





## Overview

---

The following formula is used to calculate the cable tray capacity: Variables: To calculate the cable tray capacity, multiply the width and height of the cable tray to find the total area, then multiply by the fill ratio. Cable tray fill capacity is governed by electrical codes (typically NEC Article 392) which. NEC Article 392 limits fill ratios based on cable type and arrangement — single-layer or stacked — to ensure adequate ventilation, maintain current-carrying capacity, and provide space for future cable additions without exceeding thermal limits of existing conductors. The Cable Tray Fill Calculator calculates allowable fill percentage and maximum numbers of cables, considering tray dimensions, cable sizes, spacing, and standards.



## How many cables can a 200x100mm cable tray carry

---

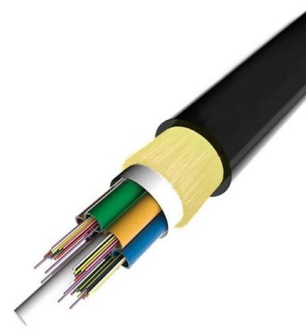
### Tray and Ladder Sizing by Cable Capacity Calculator - IEC



Calculate tray and ladder sizes by cable capacity with our IEC-compliant calculator for efficient and accurate electrical installations.

### Free Cable Tray Fill Calculator , NEC & IEC Compliant Sizing , Shielden

Properly sizing your cable tray is critical for safety and compliance. Our free calculator helps you determine the correct tray size based on NEC and IEC standards.



### Cat6 Conduit Fill Sizing Guide , PDF , Electronic

This document provides information for sizing cable trays, baskets, and conduits based on cable type and dimensions. It includes spreadsheets with required

### Cable Tray Sizing and Fill Capacity Calculator

Each cable occupies cross-sectional area based on its diameter (calculated using the circle area



formula:  $A = p \times r^2$ ). The fill ratio shows the actual percentage of tray



### Cable Tray 200x100mm

Discover 200x100mm cable tray with ventilated design, hot-dip galvanized steel, and CE certification for industrial cable laying.



### Cable Tray Raceway Fill and Load Calculations

Wire Mesh Cable Tray Fill Ratio = Cross section of cable / Cross section of tray According to NEC 392.9 (B), when using ventilated tray with multi conductor



### Raceway Cable Tray (Ducts) - Load Capacity

When planning an electrical routing project, it is critical to know exactly how much weight your raceway cable tray or system can carry. The maximum load capacity is an aspect of raceway



## Cable Tray Sizing

Learn cable tray sizing with accurate width and dimension calculations. Avoid common mistakes for efficient cable management. Read our expert guide now!

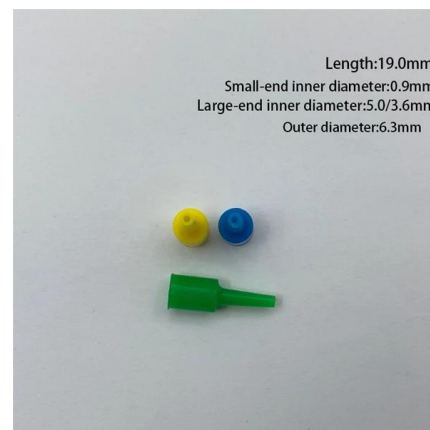


## Cable Tray Design, Layout, and Overall Wiring Planning

Learn about effective Cable Tray Design and Layout for electrical systems. Our guide covers planning, material choice, safety,

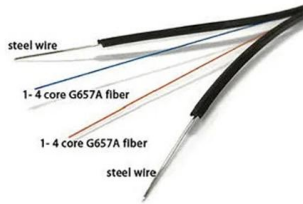
## Cable Tray Capacity Calculator

To calculate the cable tray capacity, multiply the width and height of the cable tray to find the total area, then multiply by the fill ratio. Divide this by the



## Cable Fill Ratios and Sizing Guide , PDF , Optical Fiber

This document provides sizing guidelines for cable containment, power separation, and optical fiber for cabling installations. It includes cable fill ratios for



## Cable Tray Sizing Calculator , Free Calculator , WiringCalcs

How It Works Cable trays provide an open support system for running multiple cables in commercial and industrial installations. NEC 392 governs fill limits, which vary by tray type and cable configuration.



## Cable Tray Sizing Calculator

The calculator computes the cross-sectional area of all cables and compares it to the available tray cross-section. The fill percentage indicates how much of the tray is

## Cable Tray Fill Calculator

The Cable Tray Fill Calculator calculates allowable fill percentage and maximum numbers of cables, considering tray dimensions, cable sizes, spacing, and standards. Cable Tray Fill





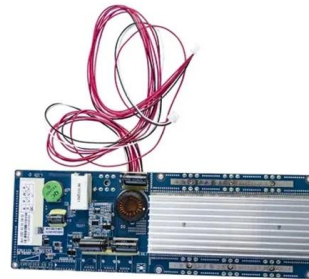
## Cable Tray Fill Calculator: Sizing for NEC/IEC

Ensure your cable runs meet NEC safety standards with our Cable Tray Fill Calculator. Calculate fill ratios for CAT6, Power, and Fiber cables to



## Cable Tray Capacity Calculator

Cable tray capacity refers to the maximum number of cables that can be installed in a cable tray without exceeding a specified fill ratio. The fill ratio is the percentage of the cross-sectional area of the tray



## Cable Tray Sizing and Fill Capacity Calculator

Calculate cable tray sizing and fill capacity based on tray dimensions, cable diameter, number of cables, and maximum fill percentage per electrical code.



## Tray Cable Size Chart: Choosing the Right Gauge

In this guide, we walk through what tray cables are, the meaning of AWG sizes, a detailed tray cable size chart, key factors in selecting the right gauge, common tray cable types and





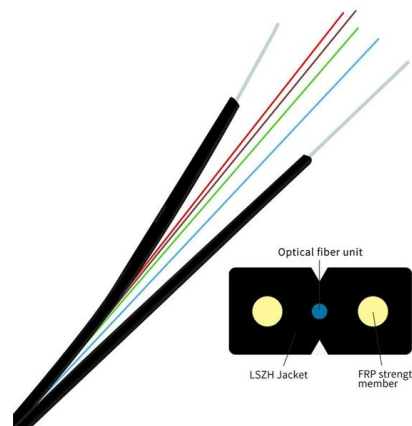
## RCDD Practice Test Verified Q& A's 100% Correct Latest 2026/

Access the RCDD Practice Test Questions featuring Verified Q& A's, 100% Correct Answers, Latest 2026/2027 Version designed for network engineers, telecom designers, and structured cabling



## Cable Tray Sizing Calculator , IEC 61537 & NEC 392 Guide

Use this cable tray sizing calculator to check fill %, select tray size, and comply with IEC 61537 & NEC 392 with formulas, example and checklist.



## Cable Tray Capacity Calculator

This calculator determines the maximum number of cables that can be safely housed within a cable tray based on its dimensions and the cross-sectional



## Cable Tray Fill Calculator

Cable management is a crucial aspect of both construction and maintenance in electrical installations. One essential tool that helps engineers



## How To Calculate Weight Of Cable Tray » Wiring Work

Calculating the weight of a cable tray is not always easy, but by following some simple steps, it can be done accurately. Understanding how to



## Cable Tray Fill Calculator

Solid bottom trays: 30-40% for power cables, up to 50% for control/instrumentation The fill capacity of a cable tray refers to the maximum amount of space that can be occupied by cables while maintaining



## NEC Article 392 Guide: Ensuring Compliance for Cable

The primary rulebook used in the safe use of cable trays is NEC Article 392. This is a description of how to select, install, and support these metal





## Channel Cable Tray Fill Calculator

Proper cable tray sizing is critical to ensure safe, efficient, and compliant electrical installations. This Channel Cable Tray Fill Capacity Calculator helps you quickly estimate how many



## Free Cable Tray Sizing Calculator -- IEC, AS/NZS, NEC, BS

The cable tray calculator determines the required tray width and type based on the number and size of cables to be installed, ensuring adequate fill levels and derating compliance.

## Load Capacity Guide: How Many Power Cables Can Your Mesh Tray

Learn how to calculate mesh cable tray load capacity for power, control, Ethernet, and fiber cables. Understand NEC fill requirements, grounding rules, and



## How Many Cables Can a Cable Tray Hold? A

This comprehensive guide will take you through the parameters; there are tables included for various types of cables, cable diameters, and tray



## Contact Us

---

For datasheets, pricing, or custom telecom energy solutions, please visit:  
<https://koskolong.co.za>