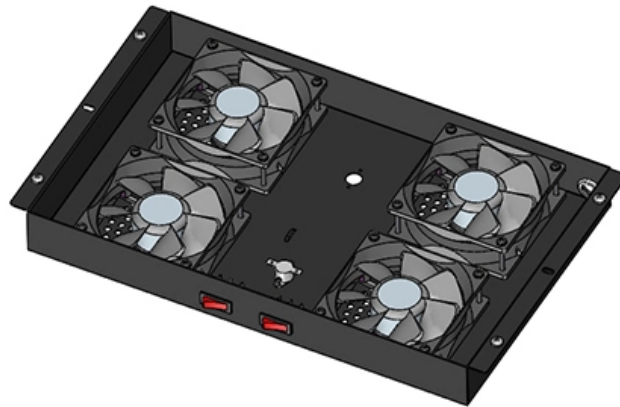




**Adam Tas Corridor Energy**

# **How many jumpers are needed for the optical port module**





## Overview

---

However, the newly introduced BiDi optical transceiver in recent years has only one port (both can receive and transmit optical signals), so a simplex fiber jumper is required. A fiber jumper consists of one or more optical fibers of a certain length and the optical connectors at both ends. These cables link the end devices to a network or join the network components in a fiber optic configuration. As an industry-standard interface specification, MPO defines the mechanical structure. See the illustration for optic cable is sensitive to excessive pulling, bending, and crushing forces.



## How many jumpers are needed for the optical port module

---



### Optical Drive Installation Guide

Jumper Setup Most IDE devices including hard disk drives and optical drives come with jumpers on the back panel to determine the device's operating mode (master or slave). Currently every drive has its

### Fiber Optic Jumpers Definition and Types

Fiber jumpers are used to jump from the device to the fiber cabling connection. There is a thick protective layer, generally used in the optical terminal and the terminal box between the



### The Ultimate Guide to SFP Modules (2026): Types,

Confused by SFP vs SFP+? Read the definitive 2026 guide on SFP modules. We explain Single Mode vs Multimode, DDM diagnostics, and how to choose the right

### MPO light module

MPO fiber jumpers are commonly used in MPO light module optical fiber jump management to connect MPO light modules to MPO patch panels



or other MPO light modules. MPO



### How to choose the fiber jumper of the optical module?

Different optical modules correspond to different optical fiber interfaces. The interface of a common optical module usually has two ports (one for receiving optical signals and one for



### Understanding the Role of an Optical Network Terminal:

Frequently Asked Questions (FAQs) Q: What is the functioning of an ONT in fiber optic internet?  
A: An Optical Network Terminal (ONT) is responsible



From standard 1U to 8U sizes to fully customized Non-standard enclosures.



### What is an SFP Optical Module? The Complete Guide to

The complete technical guide to SFP optical modules (SFP, SFP+, SFP28). Understand the core function, compare data rates (1G to 25G), learn



## Fiber jumper and fiber optic terminal box analysis

(4) LC-type fiber optic jumper: the connector connected to the SFP module, which is made of a modular jack (RJ) latch mechanism that is easy to



## How to choose optical fiber jumper for optical module

However, with the development of optical modules, the models are becoming more and more complicated, and the wiring requirements are getting higher and higher. How should we choose

## Understanding Fiber Jumper Cables: A Comprehensive Guide to

There are various kinds of fiber jumper cables, including single mode and multimode, which are based on the required distance and bandwidth.



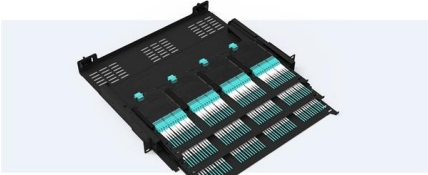
## How to choose an appropriate optical fiber jumper for

In general, two 800G QSFP-DD optical modules are inserted respectively into the corresponding switch ports, and then connected with a single



Pre-Terminated Patch Panel

- Standard 19" width
- Max 144 fibers in 1U
- Ultra-High Density Ready



Dual-nail, easy install & maintain



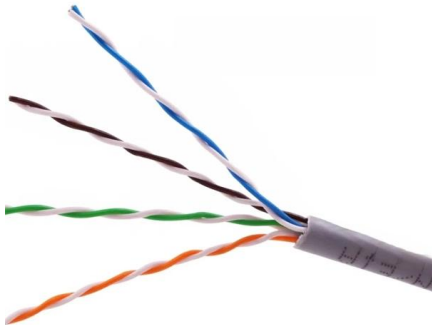
Lightweight ABS MPO cassette



Premium three metal with multi coating

Jumper Planning Guide

It is important to use proper methods when removing jumpers from a populated bay line-up to prevent temporary attenuation or permanent damage to the jumper being removed and the other jumpers in

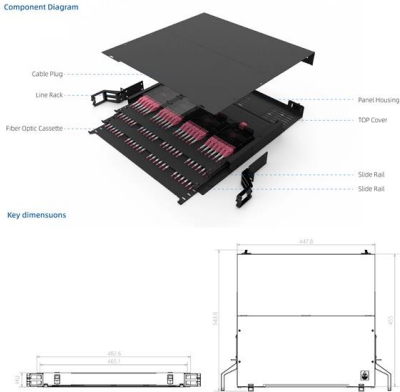


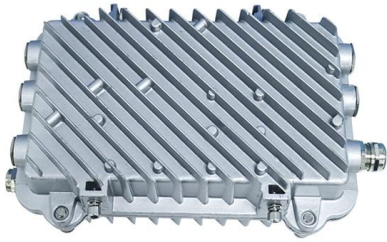
Fiber Jumpers

Use a single-mode fiber jumper for a single-mode optical module. Determine the optical connector type based on the port type. Ensure that the optical connector at each end of a fiber jumper is of the same

How to choose the fiber jumpers when using optical module

Summary: The right choice of fiber jumper will determine the quality of the using optical module, so be sure need to interface type fiber optic device to select the corresponding fiber jumpers. To ensure the





## How to Select PC/APC/UPC Fiber Jumpers for SFP

You can click [here](#) to learn more about the differences between PC/APC/UPC. How to select PC/APC/UPC fiber jumpers for SFP optical

## Optical port module PCB design and manufacturing

In the optical port PCB design, the layout of the module is also a factor that needs to be considered. The position and angle accuracy of the module need

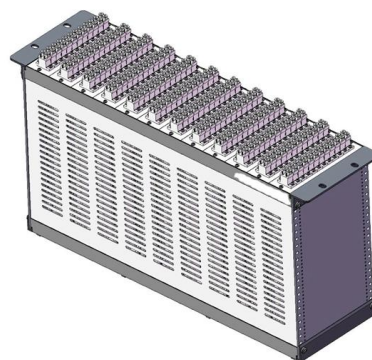


## MTP®/MPO Jumper, Harness, and Trunk Fiber Cables:

In practical deployments, the three most common cable assemblies are MTP®/MPO Jumper, MTP®/MPO Harness, and MTP®/MPO Trunk. These

## How to choose an optical fiber link and an SFP module?

For example, SFP modules (Small Form-Factor Pluggable) are among highly demanded types and have embedded transmitter and receiver. They enable to





## Optical fiber connector

Field-mountable optical fiber connectors are used to join optical fiber jumper cables that contain one single-mode fiber. Field-mountable optical fiber connectors are

## What is an SFP Module? An Ultimate Guide , SFP

What is an SFP Module? Small Form-factor Pluggable (SFP) module is a compact, hot-swappable transceiver used for both telecommunication and



## How to choose optical fiber jumper for optical module

When choosing a fiber optic jumper, the interface is an essential consideration. Usually, the interface of the optical module usually has 2 ports (one for receiving optical signals and one for

## How to Install and Remove Optical Modules Safely

Install optical modules safely with ESD protection, proper handling, and dust control. Follow these steps to avoid damage and ensure network reliability.





## Fiber Jumpers vs. Pigtails: What's the Difference? How Do They

When you're deploying or maintaining network switches and routers, understanding the physical fiber optic components that connect them is just as important as selecting the right hardware. Fiber

### what do you know about the fiber jumper of the optical module?

simplex means that this fiber jumper has only one fiber and only one fiber connector at each end, which is used for single fiber bidirectional (bidi) optical modules. duplex can be regarded as two fiber



- IP65/IP55 OUTDOOR CABINET
- WATERPROOF OUTDOOR CABINET
- 42U/27U
- OUTDOOR BATTERY CABINET

### How Many Optical Transceivers are Needed for A GPU?

In the market, there are different versions of the ratio of optical transceivers to the number of GPUs, and the figures of various versions are not

### How to Select a Suitable Fiber Optic Jumper for an

To select a suitable fiber patch cord for an optical module, we must first understand the optical transceiver from the four aspects of the transmission medium,



## Contact Us

---

For datasheets, pricing, or custom telecom energy solutions, please visit:  
<https://koskolong.co.za>