



Adam Tas Corridor Energy

How many primary power distribution boxes are there on the construction site





Overview

Primary Distribution Box: Serves as the main distribution box for a construction site or project (usually only one). Underground main trunks are possible-even common in urban areas, but cost much more than overhead construction. detailed explanation of DB, SDB, MDB, RMU, and Switchgear along with any commonly related equipment you might have missed, including their purpose, application, and hierarchy in an electrical distribution system. The distribution of electrical power is the final and most important step in the journey of electricity from generating facilities to consumers.



How many primary power distribution boxes are there on the construction site



Electrical System in Buildings

This article covers the electrical system in buildings (including distribution) at a very basic level. We will discuss the general principles for how

The Meaning and Function of Primary, Secondary, and Tertiary

Summary of Three-Tier Power Distribution System: Primary: The main distribution panel, supplies power from the transformer. Secondary: Intermediate panel, routes power to buildings or zones. Tertiary:



Top Necessities For Proper Construction Site Power

Learn the top necessities for proper construction site power distribution, ensuring safety and compliance with NEC standards. Keep your job

Power supply on the construction site

A site power distribution board is usually an electrical distribution box equipped with various



sockets to provide power for different equipment and machinery. A construction power distribution box may also



Site Boxes in stock at One Elec: express delivery

A site box is an electrical device used on temporary sites such as construction sites, market stalls, campsites and trade fairs. It provides temporary electrical distribution before the electrical panel is



Summary of key points for construction and installation of distribution

The construction and installation points of distribution boxes and switch boxes are summarized as follows: 1. Select qualified products that meet national standards and safety requirements.



Distribution Boxes: Types and Functions

Inside a distribution box are components like circuit breakers, earth leakage units, doorbells, and timers. The building's electrical power enters





The difference between the first, second, and third levels of

Generally, first level distribution does not allow direct use of electrical equipment, and second level distribution will be by power equipment because it is three-phase electricity, while third

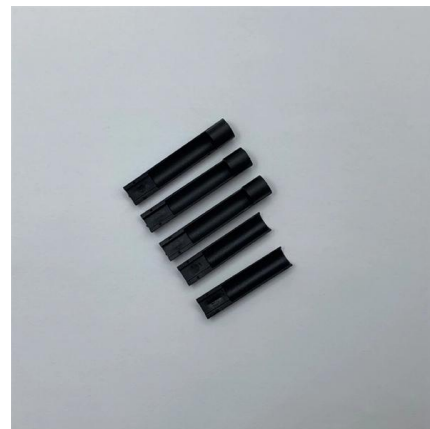


A Definitive Guide To Distribution Boxes

Power distribution boxes are beneficial because they eliminate the requirement for each output device to be connected directly to the power source. As a result, there's no reason to utilize

ENERGYBOX Assemblies for Construction Sites (ACS)

ENERGYBOX is a complete range of Assemblies for Construction Sites (ACS) pre-wired boards that can be wall-mounted or installed on a support. The panels are



CURRENT DISTRIBUTORS

What are the types of construction power distribution boxes? The type and scope of electrical equipment on construction sites is geared to the size and particular circumstances of each site.



The Meaning and Function of Primary, Secondary, and Tertiary

Differences Between Primary, Secondary, and Tertiary Distribution Boxes
Primary Distribution Box: Designed specifically for construction sites, conforming to relevant electrical codes.



WORLD WIDE WEB JOURNAL Home

O'Reilly & Associates, Inc. 103A Morris St.
Sebastopol, CA United States



Key Points Of Installation And Collocation Of Distribution Box In

1. The power distribution system at the construction site shall be distributed in different levels. The main distribution box (or distribution room) shall be set up. The distribution box shall be set





Power Distribution Systems

This section delves into the major components of AC power distribution systems, including distribution lines, distribution transformers, circuit breakers and



What is Primary Power in Construction? A Comprehensive Guide

In construction, primary power is a critical term used to describe the initial or foundational energy source that drives various systems and machinery used throughout a project. It serves as the



Understanding Power Distribution Hierarchy in Buildings

Power distribution hierarchy in building. detailed explanation of DB, SDB, MDB, RMU, and Switchgear along with any commonly related equipment you might



Construction Site Distribution Board

In this article, we'll break down what a distribution board is, what components it includes, how to choose the right one, and why it matters for the safety and



Power Distribution Boxes Explained Simply

Discover the essentials of a Power Distribution Box--how it works, key types, benefits, and tips to ensure safe, efficient electrical power management.



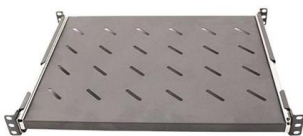
Primary and secondary power distribution systems

Primary distribution systems Primary distribution systems consist of feeders that deliver power from distribution substations to distribution



Safety requirements of distribution box

The distribution box has the characteristics of small size, simple installation, special technical performance, fixed location, unique configuration function, not limited by





Power supply on the construction site

It is therefore important that the power distribution board on a construction site has at least an IP55 protection class to ensure that the unit functions well in a harsh environment such as a construction



What are the primary, secondary and tertiary distribution boxes?

Three level distribution box: a distribution box is set under the main distribution box, a switch box is set under the distribution box, and electrical equipment is set under the switch box to form a three-level

The Hollywood Reporter - Movie news, TV news, awards news, lifestyle

Movie news, TV news, awards news, lifestyle news, business news and more from The Hollywood Reporter.



Everything You Need to Know About Temporary Power

We pride ourselves on offering customizable, industry-leading products and unparalleled sales support. Our portable construction boxes have



The installation requirements for the distribution box

Testing and Inspection After Installation After installing your distribution box, it's important to check everything before turning on the power.



MPO-MPO Low Smoke Halogen Free Sheath
Multimode 10 Gigabit 12 pole OM4
Insertion loss < 0.35dB Return loss > 50dB

Understanding Primary Electric in Construction: A Comprehensive Guide

Primary electric refers to the initial stage of electrical distribution in a construction project. It involves the high-voltage power delivered from the utility provider to the building's electrical system.



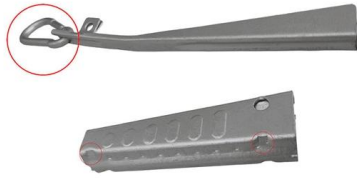
The Meaning and Function of Primary, Secondary, and Tertiary

Primary Distribution Box: Serves as the main distribution box for a construction site or project (usually only one). Secondary Distribution Box: Serves each floor or building as needed.





Electric power distribution



A 50 kVA pole-mounted distribution transformer
Electric power distribution is the final stage in the delivery of electricity. Electricity is carried from the transmission

Contact Us

For datasheets, pricing, or custom telecom energy solutions, please visit:
<https://koskolong.co.za>