



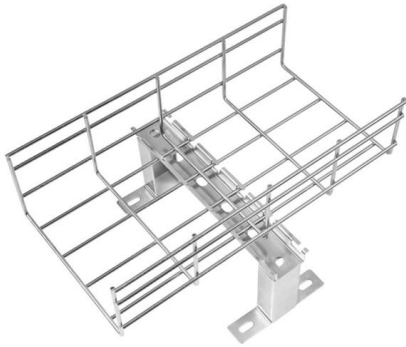
Adam Tas Corridor Energy

How many units are in the UPS distribution box





How many units are in the UPS distribution box



UPS DESIGN CONFIGURATIONS

Each UPS is capable of carrying the entire critical load and supports its own independent distribution system with no power connections between each one. Multiple power distribution units (PDUs) are

Understanding the Different Sizes of UPS Boxes

Selecting the right UPS box size is essential to protect electronics from power surges and outages. This guide covers small, medium, and large UPS boxes, detailing their uses, pros and



Quick guide to power distribution

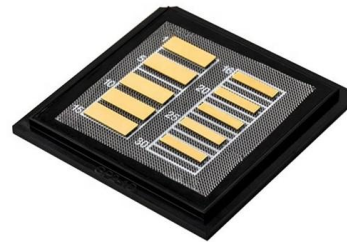
Rack-based Rack PDUs are used to effectively distribute power in rack environments with multiple outlets and a range of intelligent features to help control the power distributed to IT devices. Rack

UPS basics

This white paper provides an introductory overview of what a UPS is and what kinds of UPS are available, as well as a comprehensive guide



to selecting the right UPS and accessories for your needs.

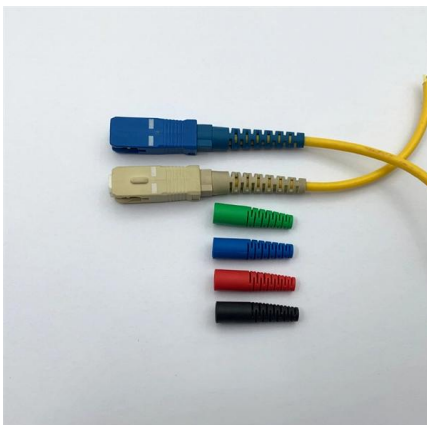


Warehousing & Distribution , UPS Supply Chain

UPS Supply Chain Solutions offers comprehensive distribution solutions, including storage, warehousing, transportation management, returns, efulfillment and more.

Handbook: Quick guide to power distribution

A power distribution rack provides space-saving power distribution in a flexible design. These racks can offer 168 circuits and accommodate more servers with multiple power cords and rack PDUs with



Uninterruptible Power Supply (UPS): Block Diagram

Off-line UPS Explanation: This UPS type switches to battery power when a power failure is detected, providing basic features and surge protection.



Power Distribution Box

This manual contains important instructions for Power Distribution Box that should be followed during installation, operation and maintenance of the Power Distribution Box to protect the safety of the



UPS basics

Large multi-story buildings, data centers and industrial facilities protecting high-power processes are typical three-phase UPS customers, as they need to distribute large amounts of power over relatively

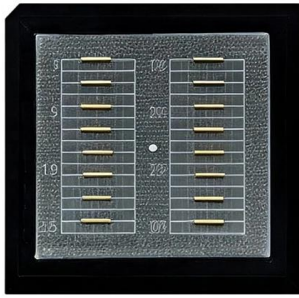
UPS Basics

If you do not monitor your power infrastructure (UPSs, rack power distribution units (PDUs) and bypass switches), you are at risk for blind spots on how the power at your location is behaving or the effect it



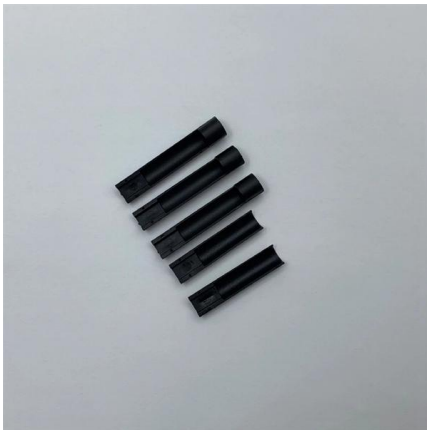
Handbook: Quick guide to power distribution

Rack power distribution units, also known as rack PDUs, are a key component to any IT environment. As the name suggests, they distribute power to network equipment within racks. A common



Understanding the Different Sizes of UPS Boxes

Small UPS boxes range from \$50-\$300, medium-sized ones from \$200-\$1,000, and large UPS boxes can cost between \$1,000-\$10,000. Additional costs to consider include shipping



Connecting UPS Units in Parallel: A Diagram for Easy Understanding

Why would you use a ups parallel connection? You would use a UPS parallel connection to increase the power capacity and reliability of your UPS system. By connecting multiple UPS units in parallel, you

Reuters , Breaking International News & Views

Find latest news from every corner of the globe at Reuters , your online source for breaking international news coverage.





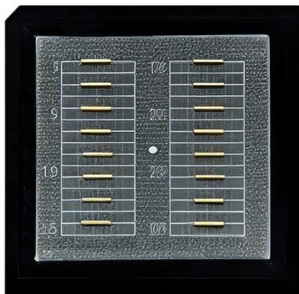
Understanding and Implementing an UPS Connection



The parallel UPS connection diagram involves connecting multiple UPS units in parallel to provide increased power capacity and redundancy. This configuration

Uninterruptible power supply

A large data-center-scale UPS being installed by electricians. An uninterruptible power supply (UPS) or uninterruptible power source is an electrical apparatus



Classification and Types of UPS - Part Two

UPS Manufacturers design many UPSs that differ in physical size starting from small UPS modules up to large sized UPS systems and with capacities ranges

Power Distribution Box: Power Distribution, Manual

With the compact parallel switch panel, users can set up a parallel system without needing to restructure an existing low-voltage main distribution system.



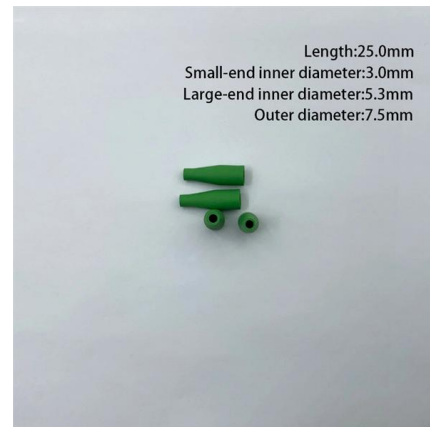
WORLD WIDE WEB JOURNAL Home

Capturing the state of distributed systems with XML Rohit Khare, Adam Rifkin November 1997pp 207-217 article



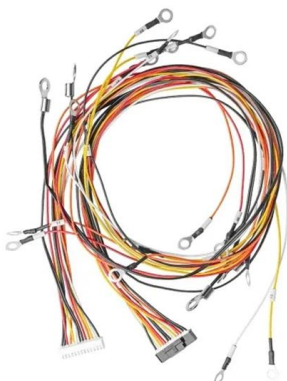
A Comprehensive Guide to UPS Power Distribution Units

Advantages of UPS Power Distribution Units UPS power distribution units offer several advantages. They provide reliable power distribution, enhanced power management, improved



Eaton UPS fundamentals handbook

An external maintenance bypass reroutes power around the UPS, allowing for maintenance or repairs without interrupting the power supply to connected devices or power distribution units (PDUs).





Eaton UPS fundamentals handbook

A FlexPDU is a basic function power distribution unit with a short power cord for easy, close mounting to a UPS. FlexPDUs are available with a variety of output receptacles, for connection to a wide range of



Overvolt Electric UPS Distribution Board - Critical

Overvolt Electric's UPS Distribution Boards ensure seamless power distribution for critical loads, featuring dual-source circuits, overload protection, and phase failure

Understanding Distribution Boxes: A Comprehensive Guide

A distribution box, also known as a power distribution box or electrical distribution box, is used to distribute electrical power safely to multiple



Understanding UPS Boxes: Sizes and Prices Explained

UPS offers a variety of box sizes and types tailored to different needs. This guide provides an in-depth analysis of UPS boxes, including their



UPS Battery Backup Buying Guide , Eaton

Get the information you need to know about Uninterruptible Power Supply solutions with Eaton's UPS System Buying Guide.



UPS Shipping Weights and Dimensions

NOTE: The UPS models marked with an * in the table above are shipped with no power modules preinstalled in the UPS and all power modules shipped separately. Battery strings are not included

UPS distribution : r/networking

As far as I've seen, the most common solution is one UPS in each IDF, and at least two UPS units in the MDF for redundancy. If your equipment has dual power supplies, make sure they go into different



Contact Us

For datasheets, pricing, or custom telecom energy solutions, please visit:
<https://koskolong.co.za>