



Adam Tas Corridor Energy

How many watts is the lighting in the distribution box





How many watts is the lighting in the distribution box



Understanding Distribution Boxes:A Comprehensive Guide

Understanding its significance, this article covers what a distribution box is, how it functions, its structure, the various types available, and how it

Wiring of the Distribution Board From Energy Meter to

How to Wire a Distribution Board? Distribution Board also known as "Panel Board", "Switch & Fuse Board" or "Consumer Unit" is a box installed in the building



What is an Electrical Distribution Box? A

Commercial: For offices and commercial buildings, distribution boxes are designed to handle more circuits and moderate power demands,

Low Voltage Lighting Distribution Box: The Heart of Efficient and

Low Voltage Lighting Distribution Boxes are



specialized electrical enclosures designed to distribute and control power to multiple lighting circuits. These boxes typically operate at voltages



Huijue engineering specific Fiber optic

HJ GROUP offers a wide variety of product types for you to choose from.



Distribution Boxes Explained: Types, Functions, and

Learn about distribution boxes, their types, functions, and safety features to ensure efficient and secure electrical power distribution in any building.

The purpose, working principle, and usage instructions

The purpose of the distribution box is to distribute electrical energy reasonably and facilitate circuit opening and closing operations. Has a high level



Distribution Box: Types and Functions , Axis-Electricals

A distribution box ensures that electrical supply is distributed in the building, also known as a distribution board, panel board, breaker panel, or electric panel.



Distribution boards components

Distribution boards (generally only one in residential premises) usually include the meter (s) and in some cases (notably where the supply utilities impose a TT earthing system and/or tariff



What is the difference between power distribution box

To understand the difference between the two, we must first know how much power they use. The lighting distribution box is generally 220V civil lighting distribution.

Understanding Electrical Panel Capacity: How Much

Flickering or Dimming Lights When lights flicker or dim during appliance usage, it's often a sign that your electrical system is struggling to



Distribution Boards

Distribution boards, often referred to as electrical panels or breaker boxes, serve as the nerve center of any electrical system. Here we explore the crucial parts of a distribution board and gain insights into



How to determine the size, installation method and

(1) Wiring method of distribution box 1)
Generally, the incoming line of power distribution box adopts five wire system, that is, a, B and C three-way phase line

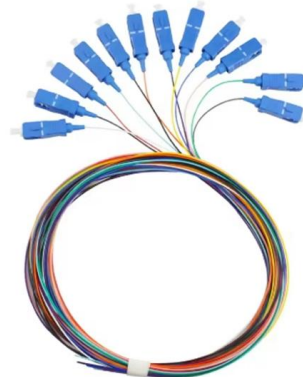


Distribution Boxes: Types and Functions

Learn what an electrical distribution box (DB/distribution board) is, its main components (MCB/RCCB/RCBO, SPD, busbar) and common types.

What is an Electrical Distribution Box? A

At its core, an electrical distribution box (or distribution board) is a metal or plastic enclosure that houses various components responsible for





Understanding Distribution Boxes: A Comprehensive Guide

A distribution box is an essential device that manages the safe and efficient flow of electrical power throughout different areas of a building or facility.

A Definitive Guide To Distribution Boxes

It is accomplished by configuring the lights to turn off while the computer is idle. Box for distributing power When we talk about distribution boxes, we can't forget about Power Distribution



What is a Distribution Box? - A Comprehensive Guide

Indoor distribution boxes are compact and accessible, suitable for controlled environments such as homes and offices where moisture and



Understanding Electrical Panel Capacity: How Much

To determine how much power your home requires, you need to calculate the total wattage of your appliances and devices. Wattage is the product

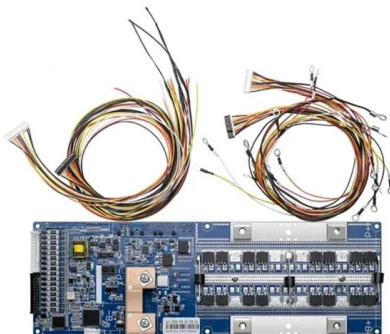


How to Calculate the Size and Number of Circuits for a Distribution

Okay, let's talk distribution boxes. You know that metal cabinet packed with switches and wires you see in basements? Yeah, that's the heart of your electrical system. Getting its sizing right isn't just about

Distributing light safely

A distribution fuse box, often also referred to as a sub-distribution board or fuse box, is a central element of any electrical installation. It is used for the structured distribution of electrical energy to different



Distribution Boxes: Types and Functions

A distribution boxes acts as the load center and main distributor of electrical power within a building. Also called a distribution board, panel board,



High-Quality Electrical Lighting Distribution Boxes Explained

These versatile components are essential for ensuring safe and efficient operation of lighting installations in diverse settings, from street lighting to commercial buildings. In this comprehensive guide, we'll



Power Distribution Boxes Explained Simply

Where Power Distribution Boxes Are Used Power distribution boxes are essential in many settings, from homes to hospitals. Here's a look at some

Guide on Calculating the Maximum Number of Lights

Learn how to calculate the maximum number of lights you can safely install on a circuit. Discover key factors like wattage, voltage, and amperage, and follow easy



The installation requirements for the distribution box

Learn how to install a distribution box safely and correctly. Covers wiring, placement, standards, and expert tips for a compliant setup.



Distribution Box and Selection Guide

Different settings have distinct electrical requirements: Residential: Homes typically require single-phase power and a Distribution Box with fewer



Contact Us

For datasheets, pricing, or custom telecom energy solutions, please visit:
<https://koskolong.co.za>