



# How much cable tray should be used for cable tray bends



- ✓ Panda PM Fiber Armored Patch Cord - 3.0mm
- ✓ ER>30dB/25dB
- ✓ Own factory, MOQ 1 piece





## Overview

---

A 10 or 12-foot cable tray is usually used for both of these installation types. Is your cable tray system optimized for safety, dependability, space and cost savings?

Cable tray (or cable ladder) systems are a popular alternative to electrical conduit systems, as they have an outstanding record for dependable service, design flexibility and cost savings in commercial and. maintain spacing or to keep cables in place when the tray is ect the minimum bend ra-dius for cables as they exit the bottom of the cable tray. The mechanical and electrical characteristics, tests, certifications, overall quality management, recommendations mentioned in this technical guide only apply to our own cable management ranges and cannot under any circumstances be transposed to si osure, overheating or. Standard Widths: Side Rail Heights: Standard Lengths: Rung Spacing Options: Material Thickness:.



## How much cable tray should be used for cable tray bends

---

### Cable Tray Dimensions Guide: Standard Sizes, Tray

Explore standard sizes by tray type, understand width and depth limits, and see how to calculate and choose compliant cable tray sizes for real projects.



### Avoiding Mistakes in Instrumentation Cable Tray

Learn how to avoid common mistakes in instrumentation cable tray installation. Follow IEC standards and EPC best practices for safe, reliable



### GUIDE CABLE TRAYS TECHNICAL

Specifies requirements for metal cable trays and associated fittings designed for use in accordance with the rules of Canadian Electrical Code, Part I and the National Electrical Code®



### B-Line series Cable Tray Design Considerations

For ladder or ventilated trough trays, the total sum of the cross-sectional areas of all the cables to be installed in the cable tray must be equal to



or less than the allowable cable area for the tray width, as

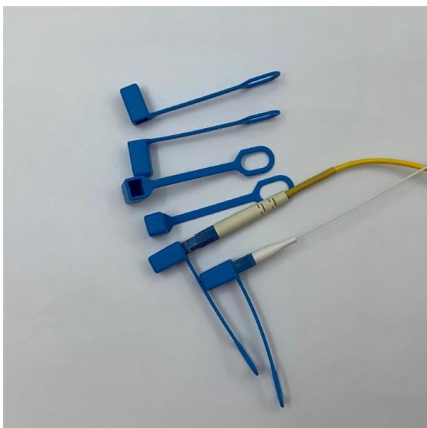


### Cable Tray SHIB NAL

Where a cable tray includes only multiconductor cables, there is generally no need to use the tray as an equipment grounding conductor because each multiconductor cable should have integral equipment

### Cable Tray Size Chart and Selection Guide

Selecting the appropriate electrical cable tray dimensions is a critical decision that directly impacts the safety, efficiency, and longevity of any industrial or commercial electrical installation.



### Wire Duct, Raceway & Tray

Wire Duct, Raceway & Tray Protect your employees and equipment from harm by using wire ducts, raceways and trays for cable containment and organization.



## Cable tray fitting problem

Hello, all, I have a problem with a cable tray fitting I created. It is a "jump-over (or under)" piece that I want to use where I have to cross two trays at same level, but without a cross. The fitting

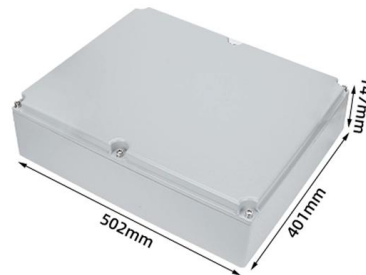


## Cable Tray Technical Guide A practical guide to product selection and

The choice of method should be discussed with a local inspector. The best decision may be to extend only the cables, creating a discontinuity in the cable tray.

## How Do I Organize Cables?

Measure cable lengths needed, and plan for excess (but not too much!). Decide on the cable management solutions you'll use (e.g., ties, sleeves, trays). Gather Your Supplies: Equip



## Cable Tray Width, Dimensions and Specifications as per

Learn about cable tray width dimensions and specifications as per NEC standards. Understand types, sizes, materials, and installation guidelines for safe and



## Wire Duct, Raceway & Tray

Wire Duct, Raceway & Tray Protect your employees and equipment from harm by using wire ducts, raceways and trays for cable containment and organization. Easily integrated into existing systems,



## Cable Tray Sizing

Learn cable tray sizing with accurate width and dimension calculations. Avoid common mistakes for efficient cable management. Read our expert guide now!

## Cable Tray Bend Calculator

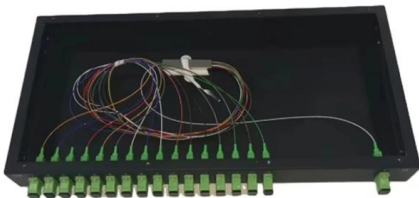
Calculate the minimum required bend radius by multiplying the cable's outside diameter by its bending factor (e.g., 10x for multicore). Then, select a standard tray fitting (300mm, 450mm, etc.) that





## Cable Tray Sizing & Load Calculations Made Simple

For heavy power cables or long spans, ladder trays typically perform best. For mixed small cables, perforated works well. Width is set by total cable area plus spare factor; depth helps

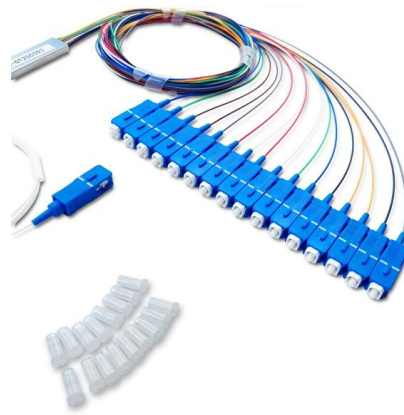


## A T& B Cable Tray Metallic cable tray

Cable tray systems, including trays, supports, fittings and other materials, are generally much less expensive than conduit wiring systems. In addition, major cost savings are generated by the relative

## Cable Calculator

How to find the size of a cable? Cable size calculator to aid specification of cables to British Standard BS7671 and International standard IEC 60364-5-52. Use the cable calculator to add your installation



## IEC Standard for Cable Tray: Complete Technical Guide

When cable trays are used as part of an earthing path, they must meet specific resistance limits. IEC 61537 mandates that trays used for bonding or



## Best Practice Guide to Cable Ladder and Cable Tray Systems

The radius for cable ladder and cable tray fittings is usually determined by the bending radius and stiffness of the cables installed on the cable ladder or cable tray.



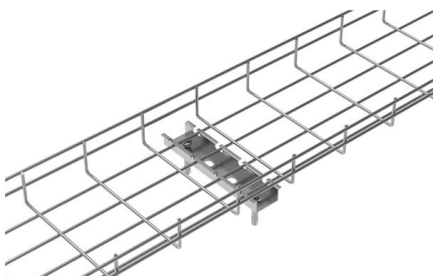
## Cable Tray Design, Layout, and Overall Wiring Planning

Learn about effective Cable Tray Design and Layout for electrical systems. Our guide covers planning, material choice, safety, and maintenance.



## A Guide to Installing and Supporting Electrical Cable Trays

A professional guide to installing electrical cable tray systems per NEC Article 392. Covers support, securing cables, and fill calculations.





## Cable tray

In the electrical wiring of buildings, a cable tray system is used to support insulated electrical cables used for power distribution, control, and communication. Cable



## Cable Tray Size Calculation for Project Engineers

Cable tray size calculation is important for ensuring safe cable installation, proper heat dissipation, and enough spare capacity for future

## Types of Cable Typically Used in Cable Tray

Type ITC - Instrumentation Tray Cable - (NEC Article 727) - These types of cables are instrumentation cables and are available in shielded or unshielded



## Wire Duct, Raceway & Tray

A cable tray is a rigid, structural system used in commercial and industrial settings to support and manage power and communication cables. While it serves a similar function to raceway or wire



## Cable Tray Technical Guide A practical guide to product selection and

**SOLID-BOTTOM CABLE TRAY** Providing additional cable protection, solid-bottom cable tray is sometimes preferred to support and protect numerous small instrumentation and control cables.



## Cable Tray Load Calculation and Sizing: Your Easy Guide

Worried about cable tray capacity? Learn simple cable tray load calculation steps. This guide helps you pick the right tray every time, keeping

## Preventing Cable Tray Deformation During Installation

Learn how to prevent cable tray deformation during installation. Discover practical measures to ensure proper installation, enhance cable tray





## Contact Us

---

For datasheets, pricing, or custom telecom energy solutions, please visit:  
<https://koskolong.co.za>