



**Adam Tas Corridor Energy**

# **How much optical attenuation does the multimode module s intranet achieve**





## Overview

---

The equipment used for communications over multi-mode optical fiber is less expensive than that for. Multi-mode optical fiber features a larger core diameter (typically 50–100  $\mu\text{m}$ ), allowing multiple light modes to propagate simultaneously.



## How much optical attenuation does the multimode module s intrane

---



### The Ultimate Guide to Fibre Optic Attenuators

Since too much light may saturate the fibre optic receiver, optical attenuators are often deployed in the system to reduce the light power and achieve the best fibre optic system performance.

### 1G SFP Modules: A Deep Dive into Specs & Types

Learn how to choose and optimize 1G SFP modules. Compare specs, fiber vs copper types, troubleshooting tips, and best practices for reliable networks.



### Singlemode vs Multimode Fiber

What is Optical Fiber? Optical fiber, as a type of optical transmission medium, utilizes the principle of total reflection of light in glass or plastic fibers to

### Attenuation vs. Wavelength in Multimode Optical Fiber

Attenuation in multimode optical fibers varies significantly with wavelength. Shorter



wavelengths (like 850 nm) typically experience higher



### OM1 vs OM2 vs OM3 vs OM4 vs OM5 Fiber: Multimode

A complete guide to multimode fiber types: from OM1 to OM5, covering modal dispersion, bandwidth limits, cabling design, and future trends.

### Single Mode vs Multimode Fiber: Key Differences

In optical communication systems, the choice between single mode (SM) and multimode (MM) fiber hinges on performance requirements, distance,



### Understanding Single-mode and Multi-mode SFP

A:SFP single-mode optical modules and SFP multi-mode optical modules are incompatible. If you mix SFP single-mode optical modules and SFP multi-mode



## Single Mode vs Multimode Fiber, What is The

Learn the key differences between single mode vs multimode fiber cables and choose the right one for your fiber optic system.



## Multimode Fiber Data Sheet

This fiber is a bend-insensitive, graded-index multimode fiber designed for transmission speeds of 1 Gbps but also appropriate for transmission speeds of up to 10 Gb/s.

## Tutorial Passive Fiber Optics, Part 4: Multimode Fibers

Compared with a single-mode fiber, a multimode fiber allows for much easier launching of light, particularly if it supports many guided modes. For efficient



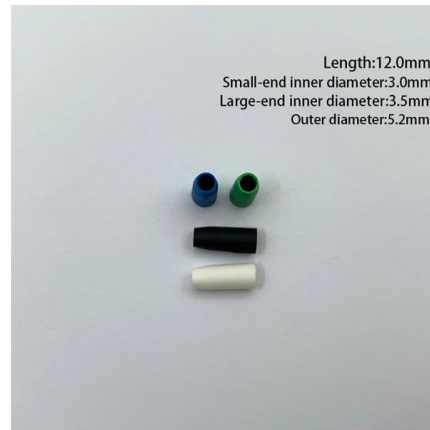
## Fiber Optic Patch Cables: The Complete 2026 Buyer's Guide

Confused by LC, SC, MPO, UPC, and APC? This complete fiber optic patch cable guide covers connector types, single-mode vs multimode, insertion loss specs, and how to choose the right



## OM2 Opti OM3 OM4 Multimode TR2 042214

Panduit OM2 and laser-optimized OM3, OM4 and Signature Core™ multimode fibers exceed domestic and international standards for optical fiber, including TIA-492AAAB, TIA-492AAAC, TIA-492AAAD



## The FOA Reference For Fiber Optics

Modal Effects on Multimode Fiber Loss Measurements  
In order to test multimode fiber optic cables accurately and reproducibly, it is necessary to understand modal

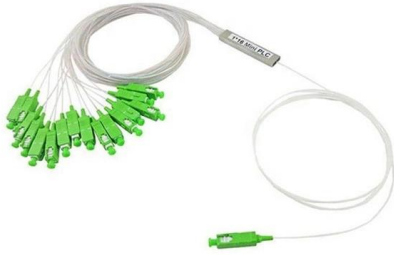
## Everything You Need to Know About Multimode Fiber

While multimode fibers excel in short to medium-distance applications, they are not typically recommended for long-distance transmissions



## Cisco Multimode SFP Module Data Sheet for 1000BASE

Explore the benefits, specifications, and ordering info for Cisco Multimode SFP Transceiver Module for 1000BASE-SX applications. Buy genuine



## Single Mode vs Multimode Fiber Explained , TRG

Understand the difference between single mode and multimode fiber, including performance, cost, and use cases, to choose the right fiber for your network.

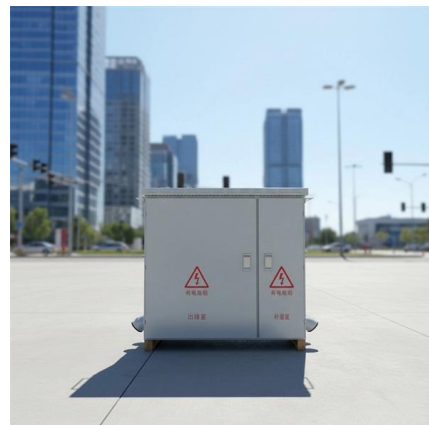


## Multimode Optical Fiber Selection & Specification

Both dispersion (optical pulse broadening) and optical loss (whether it is fiber attenuation or passive component insertion loss) affect overall system bandwidth.

## Everything You Need to Know About Multimode Fiber

Multimode fiber cable is a type of optical cable used for high-speed data transmission over short distances. It is widely used in local area networks, data centers, and other applications where high



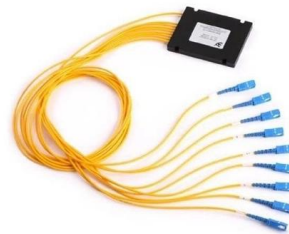


## Optical Signal Attenuation and Dispersion , Springer Nature Link

When information signals travel in any type of transmission medium, various signal power losses and signal fidelity distortions are always present. Attenuation of a light signal as it propagates

## Single & Multimode Fiber Optic Cable: What's the

On the other hand, multiple light rays propagate through the waveguide at the same time in multimode optical fiber. Single-mode fiber also has a

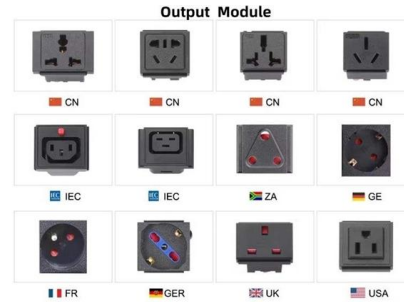


## Understanding Fiber-Optic Cable Signal Loss, Attenuation, and

Although attenuation is significantly lower for optical fiber than for other media, it still occurs in both multimode and single-mode transmissions. An efficient optical data link must transmit

## Understanding the Differences Between OM4 and OM5

Along with improved light sources such as Vertical-Cavity Surface-Emitting Lasers (VCSELs), which can be modulated at higher rates, these



Why Choose Us

- 20 Years of OEM/ODM 20 years factory manufacturing experience.
- Professional R & D team 30 years experience in electrical electronic engineer.
- Fully Certified Quality certified CE,UL,ROHS,ISO9001,ISO14000 etc.
- Timely Delivery 21 production lines, 500 employees, timely delivery guaranteed.
- Quality Assurance Professional QC team with full process inspection.
- After-sales service After-Sales Service for Customer Satisfaction.



### What Is QSFP28? A Clear Explanation of 100G Transceivers

Learn what QSFP28 is, how 100G transceivers work, key standards, module types, and common deployment scenarios in modern data center networks.

### SFP Module Types: Single-Mode vs Multimode SFP

Single-mode and multimode SFP are two SFP module types that will work on different fiber types. This post focuses on the color coating, laser transmitter wavelength, transmission



### Fiber Optic Attenuation Calculator , Fiberopticx

Total Attenuation (dB) = (Attenuation Coefficient \* Cable Length) + (Number of Connectors \* Connector Loss) + (Number of Splices \* Splice Loss) By entering the relevant values, you can estimate the total



## What Are the Limitations of Multimode Fiber?

The struggle to retain signal potency over extended stretches of multimode fiber optic cable often complicates network design and functionality. Attenuation can lead to data loss, reduced



## QSFP28 Module Types: SR4, LR4, CWDM4 & Single-Lambda

Compare all QSFP28 module types: SR4, LR4, CWDM4, PSM4, ER4, ZR4, and single-lambda DR1/FR1/LR1. See real pricing, link budgets, and a selection framework.



## Fiber Optics Part 2: Single-Mode Fiber vs. Multi-Mode

Duplex LC multi-mode fiber optic patch cord (Courtesy of Corning Optical Communications). Contrary to what you might think, the larger core size



## Contact Us

---

For datasheets, pricing, or custom telecom energy solutions, please visit:  
<https://koskolong.co.za>