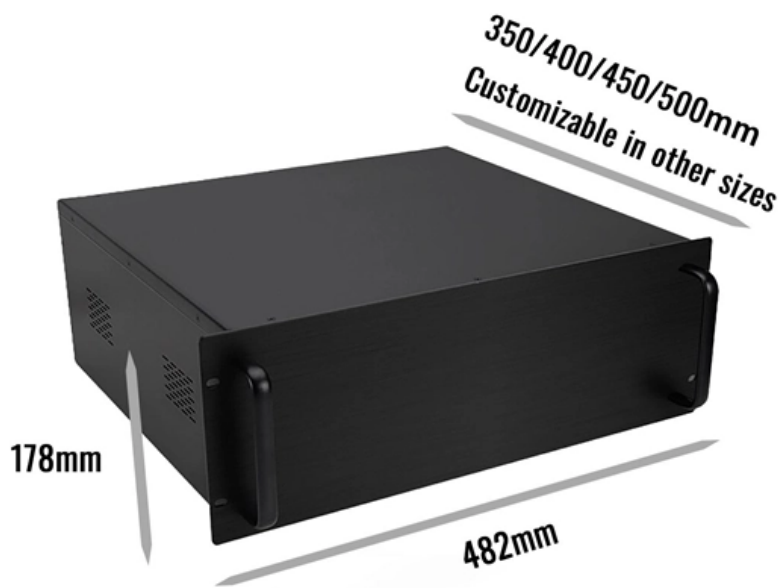




Adam Tas Corridor Energy

How much shorter will the cable tray be when climbing a slope





How much shorter will the cable tray be when climbing a slope



[zxcvbn-rs/src/frequency_lists.rs at master](#)

Port of Dropbox's zxcvbn password strength library for Rust - shsssoichiro/zxcvbn-rs

Cable Tray Types and Sizes

Explore various cable tray types and sizes for electrical installations. Learn about ladder, perforated, solid-bottom, wire mesh, and channel trays in this complete

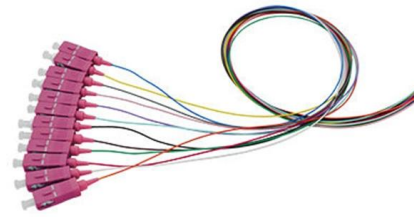


Cable Tray Installation

Learn everything about cable tray installation with our complete guide. Discover types, steps, and safety tips for efficient electrical cable management.

[coinkit/coinkit/words.py at master · mflaxman/coinkit · GitHub](#)

Cryptocurrency wallet interfaces for Bitcoin, Litecoin, Namecoin, Peercoin, and Primecoin. -



cable tray slope

As more and more cable tray is joined onto the system and along various points where the slope has been created it then adds more slopes to compensate so one end of the cable tray

Best Practice Guide to Cable Ladder and Cable Tray Systems

The radius for cable ladder and cable tray fittings is usually determined by the bending radius and stiffness of the cables installed on the cable ladder or cable tray.



A Guide to Installing and Supporting Electrical Cable Trays

A professional guide to installing electrical cable tray systems per NEC Article 392. Covers support, securing cables, and fill calculations.



Zip Line Design Calculations: A Comprehensive Guide

Conclusion Designing a zip line involves a series of precise calculations and considerations to ensure safety and functionality. By



Cable tray install , Information by Electrical Professionals for

In general, vertical spacing for cable trays should be 30 cm (12 in), measured from the bottom of the upper tray to the top of the lower tray. A minimum clearance of 23 cm (9 in) should be

Cable Tray Sizing Calculator , IEC 61537 & NEC 392 Guide

Use this cable tray sizing calculator to check fill %, select tray size, and comply with IEC 61537 & NEC 392 with formulas, example and checklist.



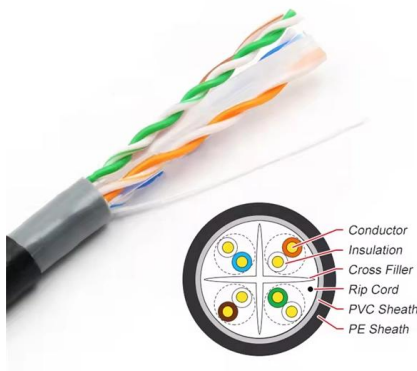
Important design considerations for cable ladder and

The cable tray is available in different widths and heights, where information on levels of deflection can be obtained directly from the manufacturer.



Funiculars: A Slippery Slope

You normally want ramps to have a relatively low slope: it's hardly going to cut back on the amount of work you need to do to get something to the



B-Line series Cable Tray Design Considerations

Our wind certification report provides you with list of acceptable B-Line series cable tray supports, fittings and covers based off of the environmental conditions, cable loading, and type of cable tray in your

Best practice guide to cable ladder and cable tray

Cable ladder and cable tray systems The following recommendations are intended to be a practical guide to ensure the safe and proper installation of





How to install Cable Trays - Best Guide in 2026

Step-by-step on-site guide: learn how to plan, mark, support, and install cable trays correctly, from shop drawing approval to final checks.



Crackhead/pass.txt at master · moimikey/Crackhead ·

How to create a web form cracker in under 15 minutes. - moimikey/Crackhead



Climbing Slings, Cord & Webbing: How to Choose , REI Expert Advice

Slings, runners, cord, cordelettes and webbing are all climbing essentials. Learn how to choose the type you need.

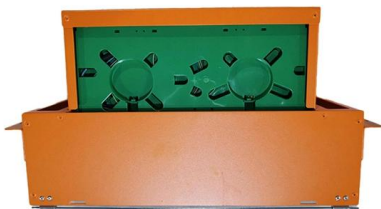
Cable Tray Spacing Standards for Installation and Safety

The Importance of Cable Tray Spacing in Electrical Infrastructure Cable tray spacing is a critical aspect of electrical infrastructure, influencing both



Top 10 Installation Requirements for Cable Trays

2? Distance: Cable trays must be at least two meters above the ground, and the distance from the top of the tray to the ceiling or other obstacles must not be less than three



Precautions for Cable Tray Installation

The overall layout of the cable tray should be short distances, economic feasibility, safe operation, and meet the requirements for construction, maintenance, and



10 Things to Consider when Selecting a Cable Tray

We want to see your next construction project succeed whether you choose Snake Tray as your partner for cable management solutions or not





cable tray slope

If 2 cables trays are joined and they have a slight difference in offset height REVIT automatically adds a slope to enable them to join, this is causing endless problems. As more and



How to align cable tray into a sloping framing or ceilings in Revit

Is it possible to align the cable tray with a sloping framing or ceilings in Revit? Use the following steps to adjust cable trays with sloping elements using align option: If the cable tray is

CABLE TRAYS GENERAL INFORMATION AND

Using cable trays as walkways can cause personal injury and also damage cable tray and installed cables. Performances of cable tray systems are dependent on



Criteria for Sizing, Designing, Installing and Supporting of Cable-Tray

4.1 Cable Tray is a unit or assembly of units or sections and associated fittings made of metal or other noncombustible materials that form a rigid structural system used to support electrical cables.



Technical Guidelines for Cable Tray Installation and

Cable tray installation must comply with specific technical standards to ensure electrical safety, system reliability, and long-term maintainability. This document



CABLE TRAY SYSTEMS GUIDE

The design and cost of the cable tray is greatly affected by this designation. In order to determine the most appropriate and economical system, a class should be selected that reflects the actual total

waifu-diffusion/tokenizer/vocab.json at main · jack-op11/waifu

Contribute to jack-op11/waifu-diffusion development by creating an account on GitHub.





Contact Us

For datasheets, pricing, or custom telecom energy solutions, please visit:
<https://koskolong.co.za>