



Adam Tas Corridor Energy

How to Choose a Core Switch





How to Choose a Core Switch



Google

Checking your browser before accessing undefined Click here if you are not automatically redirected after 5 seconds. Checking your browser - reCAPTCHA

Understanding the Core Switch: Key Differences and Uses

Explore the core switch's role as the backbone of your network. Discover key differences, uses, and insights into layer 3 core switch technology.



Nagaland News, India News, Northeast News

The Morung Express brings the Latest News, Top Breaking headlines on Politics and Current Affairs in Nagaland India and around the World, Naglaand News, Naga

What is a Core Switch , Functions and Difference over Normal Switch

What is a core switch and how it works? This article builds the basics of this kind of switch for



the ones who don't know anything about it. What is a Core Switch? It is a powerful



Understanding Core Switch: What It Is and How to

Factors to Consider When Choosing a Core Switch. When selecting a core switch, it's essential to focus on several crucial aspects that can significantly

Windows Laptop Lagging? Fixes That Finally Worked for

Is your Windows laptop lagging? These simple fixes cover startup bloat, temp files, power settings, and more. No reinstall needed. Try them today!



How to Choose the Right Core Switch for Enterprise

Learn how core switches for enterprise networks and LAN campus networks function in the hierarchical internetworking model and how to choose



Choosing Your Core Switches - Majornetwork

When designing data center or campus LAN with Cisco products (see I made the point clear here immediately) a no-brainer solution is using Nexus 7000 switches in the core. There aren't

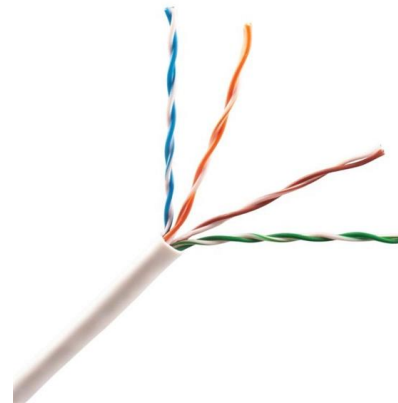


What Is a Core Switch?

Explore what a core switch does, why it's essential for enterprise networks, and how to choose the right model. Includes real-world applications and Cisco/Huawei/Aruba model comparison.

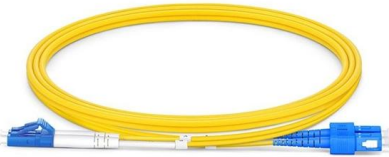
The Best Free VPNs We've Tested for 2026 , PCMag

If you're short on cash, you can still get a VPN to improve your online privacy. Here's everything you get (and don't get) with the top free VPNs we've



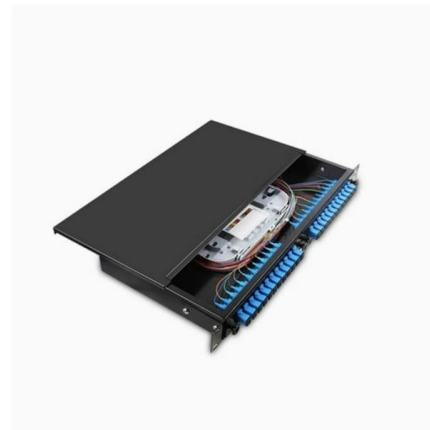
Tech & Work Archives , TechRepublic

Kevin O'Leary's Wonder Valley data center project faces scrutiny as job estimates shift and Utah residents raise environmental concerns. If you can only read one tech story a day, this is it



Understanding the Core Switch: Key Differences and Uses

This determines network efficacy, dependability, and the speed at which information is exchanged. This article will discuss critical aspects of core



How to Install Amharic Keyboard On Windows? Need a powerful

How to Install Amharic Keyboard On Windows?
Need a powerful desktop for work or home? ?
Lenovo Core i3 ? 8GB RAM / 1TB Storage ?
Smooth, fast & reliable. Still struggling with
Power Geez? Can't

core switch -selection

People have known to directly connect PCs (because they were "servers", in a sense) to "core switch" because they could not be bothered (or could not afford) to put an aggregate switch.



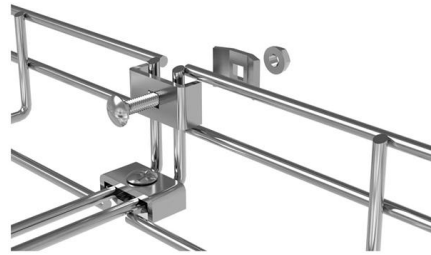


IT news, guides and background information

News and forums on computers, IT, science, media and politics. Price comparison of hardware and software as well as downloads at Heise Medien.

What is Core Switch and How to Choose-QSFPTEK

In this article, we will provide an overview of the core switch, its significance, and offer guidance on how to choose the right core switch for your



cs-178-project/imdb.vocab at main · apmalani/cs-178-project

Contribute to apmalani/cs-178-project development by creating an account on GitHub.

Understanding Core Switch: What It Is and How to

In the realm of system networking, three key types of switches are frequently mentioned: access switches, aggregation switches, and core switches.



Layer 2 vs Layer 3 Switch: Key Differences and Use Cases

Layer 2 vs Layer 3 switch explained. Learn MAC vs IP forwarding, inter-VLAN routing, performance differences, and when to choose each switch type.

How to choose the right core switch for a medium to

In medium to large networks, core switches are key devices to ensure efficient, stable and secure network operation. Choosing the right core switch not



How to Choose a Core Layer Switch?

As the core backbone layer of the entire network architecture, the core layer bears the traffic transmission of the entire network, so the core layer has high requirements for core switches and





Turn Bluetooth on or off in Windows

Learn the step for turning Bluetooth on or off in Windows using the Settings app, quick settings, and action center.

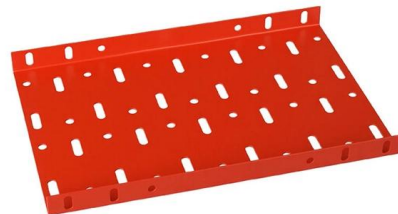


What Is a Core Switch? Network Backbone Architecture Guide

Discover what a core switch does in a 3-tier network model. Learn about ASIC routing, collapsed core vs dedicated core topologies, and SMB sizing guides.

What is Core Switch and How to Choose?

This article will explore the core switches and provide valuable insights on how to choose the ideal core switch for your network needs. Join us on this journey to understand what a core layer switch really



Contact Us

For datasheets, pricing, or custom telecom energy solutions, please visit:
<https://koskolong.co.za>