



Adam Tas Corridor Energy

How to aggregate dual uplinks on a switch





How to aggregate dual uplinks on a switch



Solved: Dual Uplinks

Solved: Hi Everyone, I'd like to start getting dual uplinks to my IDFs as I upgrade them. I have 2 9372 Cisco switches that form a VPC. Right now I just one uplink into my MS120, I would like

How do i combine/aggregate 2 uplinks into 1 and load balance

Hi, So i have 2 uplinks provided by my hosting, both are 1gbps and connecte to 46 & 47 port. I was wondering how i can combine them into 1 connection and split the traffic between both? My servers



Configuring MC-LAG in UniFi Network - Ubiquiti Help Center

Multi-Chassis Link Aggregation Group (MC-LAG) enables redundancy and load balancing by connecting two ECS-Aggregation switches as an MC-LAG pair. This setup ensures minimal downtime and

Solved: Re: Dual Uplinks

With VPCs, the Nexus pair behaves as one switch in the perspective of aggregate links. On the MS you can just build an aggregate, and you are



Can I have 2 uplinks from one switch to the UDM-Pro in

Second issue is the USW-24-POE supports only gigabit SFP (I'd need the PRO switch if I want 10Gig SFP+ but the cost is much higher and because the 8

Can I aggregate multiple uplink ports between Ethernet switches?

What you need is link aggregation (LAG), preferably LACP which is an IEEE, vendor-agnostic aggregation protocol. Put the desired interfaces in an LACP trunk group on both sides and then



networking

One cheeky and simple way to do this is to use two switches rather than one. You could then uplink half of your devices to one switch and half on the other, and thereby double your total throughput. If you





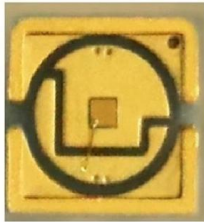
Is it possible to have two uplinks? , NETGEAR Communities

If you intend to gain some higher bandwidth over multiple links, port aggregation and LAG is the method of choice. This requires switches supporting link aggregation or link aggregation



Switch Stack

This way no loops are created from the dual uplinks, and if one goes down it swaps over to the other. We have a rather large deployment where we



How To Set Up Switch Link Aggregation

In this article, I'm going to describe how to set up Link Aggregation between two managed switches to provide connectivity, redundancy, and expanded



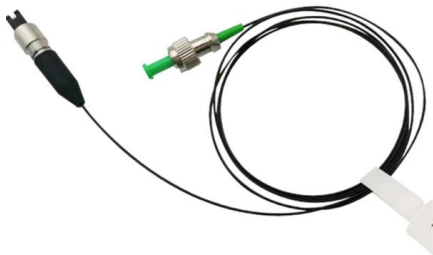
Support

Contents Introduction Prerequisites Example: Configuring dual-uplink interfaces Network configuration Analysis Restrictions and guidelines Procedures Configuring the core switch Configuring the AC



Linking Ubiquiti Aggregation Switches

Would I have any issues if I linked a Ubiquiti aggregation switch to another? We have some fiber runs in our building, but there isn't enough runs to supply all my switch locations and a

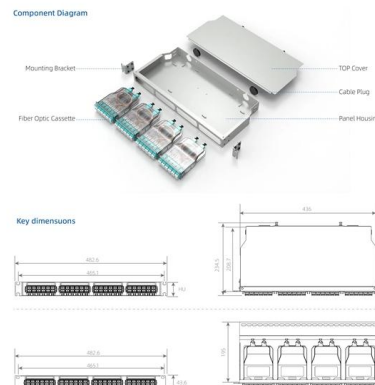


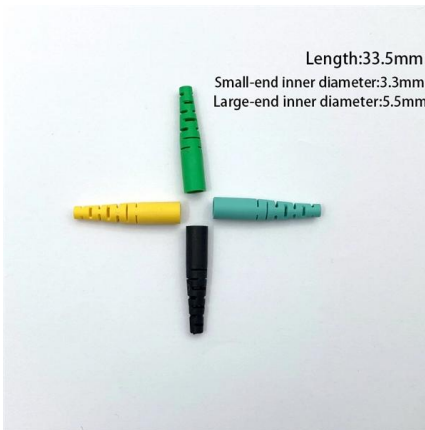
Everything You Need to Know About Aggregation Switch

What is an Aggregation Switch and How Does it Work? An aggregation switch consolidates data traffic from multiple network access

Is it possible to have two uplinks? , NETGEAR Communities

Is it possible to have two uplinks? Hi, I have a #GS116Ev2 - 16-Port switch as the main switch for my home network. I've set up a NAS, Server, and another device in my cellar; as I only





How To Set Up Switch Link Aggregation

I'm going to set up Link Aggregation between two gigabit switches: an 8 port Linksys SRW2008; and a 16 port Netgear GS716GT, shown in Figures 1 and 2 below. We

Arista CCS-750-SUP100 , 750 Series Supervisor Module, 40/100G QSFP Uplinks

Q: Can I use dual supervisors for redundancy? A: Yes, the 750X Series chassis supports dual supervisor modules for high availability. Both supervisors' uplinks remain active even in redundant



How To Set Up NIC Teaming (Link Aggregation)

Unfortunately, most consumer-level switches and routers do not support link aggregation, so you'll have to link into business-level products, which

Multiple uplinks on a MS225 switch : r/meraki

You can aggregate the uplinks for bandwidth -so yes under those conditions. You can have uplinks from switch a port a to switch b and switch a port b to switch c. Without aggregation I would not put both



Cisco

Cisco - Aggregating Switch Links ¶ Switch Port Aggregation with Ether Channels ¶ Under normal circumstances STP will only allow a single link to forward traffic Etherchannels bundle multiple

Port Aggregation FAQs - Ubiquiti Help Center

All UniFi Switches support aggregation, except USW-Flex, USW-Flex-Mini and USW-Ultra. Port aggregation is not supported on most UniFi Gateways; it is only



Enhance Your Network with a Link Aggregation Switch:

Discover the benefits, configuration, and best practices of using a link aggregation switch to enhance your network. Combine multiple Ethernet links into



PA-Aggregate-Group-Configuration-Dual-Uplink-Core-Switch

From switch side also, you need to create port aggregation/channel of the interfaces that are going to be terminated on the firewall. So on both end devices (switch and Palo Alto), you will

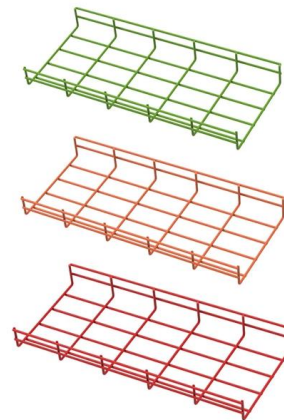


Understanding Switch Aggregation: A Comprehensive

Defining switch aggregation and its role in network architecture Switch aggregation, also known as link aggregation or trunking, is a method used

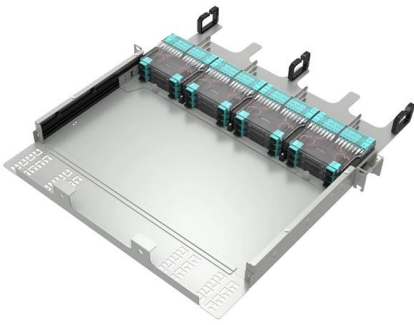
Connecting multiple uplink ports between 2 switches

Switch Pro Aggregation from UniFi has 4 ports with 25G. if I have two same switches and I connect both of them with 3 cables through 25G ports, will that work, if it does will it improve the



What is link aggregation and how do I set it up on my

Link aggregation on a switch allows your network devices to treat multiple Ethernet links as if they were a single link. Depending on how link aggregation is set up in your network, the link



Guide

Now, connect each uplink you have configured between the switch and gateway, starting with the one carrying vlan1/management vlan. After a few



Link Aggregation: What is it, and How Does it Work?

Multi-chassis versions of link aggregation One of the really interesting ways of deploying an aggregated link is to connect a device to a redundant pair of

Solved: Link aggregation to 2 core switches

Hi guys, We're planning to purchase 2 x WS-C3750G-12S-E core switches and a WS-C2960G-48TC-L access switches. I'd like to know, is it





Uplink Interface Connectivity

Uplink Interface Connectivity This workflow describes how to configure the Ethernet interfaces that connect a switch or switch stack to distribution switches or routers. These interfaces are uplink

Contact Us

For datasheets, pricing, or custom telecom energy solutions, please visit:
<https://koskolong.co.za>