



**Adam Tas Corridor Energy**

# **How to calculate the last digit of the distribution box number**





## Overview

---

There are two ways you can calculate the Check Digit: - Use GS1 global website's Check Digit Calculator or - Login to MyGS1 and use ProductVault. ProductVault will automatically calculate the Check Digit for you. Each bar represents a digit, and the height of the bar is the percentage of numbers that start with that digit. Frequency of first significant digit of physical constants plotted against Benford's law. Benford's law, also known as the. The last digit of a barcode number is a computer check digit which makes sure the barcode is correctly composed. There are several GS1 data carriers commonly used to convey GTIN-14 data structures.



## How to calculate the last digit of the distribution box number

---



### How to Calculate a DEA Number: A Comprehensive Guide

Spread the love! Introduction A Drug Enforcement Administration (DEA) number is a unique identifier assigned to healthcare professionals who prescribe, dispense, or administer controlled substances.

### GS1 Canada , Check Digit Calculator

This page provides information for each GS1 ID Key, shows how the calculator works and even provides you step by step instructions on how to manually calculate the check digit by using the simple



### EAN-13 Check Digit Calculator

EAN-13 Check Digit Calculator The last digit of EAN-13 barcodes is a check digit. The check digit is used to detect errors mostly caused by human transcription. The red mark below shows the check

### How is the check digit of a container calculated?

If the final difference is 10, then the check digit becomes 0. Steps b) to e) is a calculation of the



remainder found after division of a) by 11. 11 is used as



## UPC Barcode & Check Digit Calculation

With a UPC barcode, the last digit is called the check digit. The check digit is used to make sure a barcode has been entered (typed) or scanned correctly to minimize human errors or scanning errors.

## Check Digit Calculator

The last digit of a barcode number is a calculated check digit. The check digit is calculated from all the other numbers in the barcode and helps to confirm the



## Barcodes: What is a Check Digit & How is it Calculated?

Barcodes are not just collections of randomly assigned numbers. Their sequence serves a specific purpose, highlighted by the check digit. The



## Solving Barcodes: What is a Check Digit & How is it

The check digit represents the last digit of the barcode (to the right), calculated from all other digits in the code. It is the weighted sum of all other

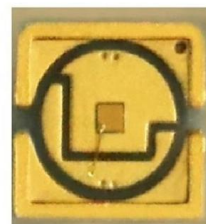


## Container Check

The last digit of a container number, the check digit, helps to check integrity of the container number and detect possible errors. This container number validator tool

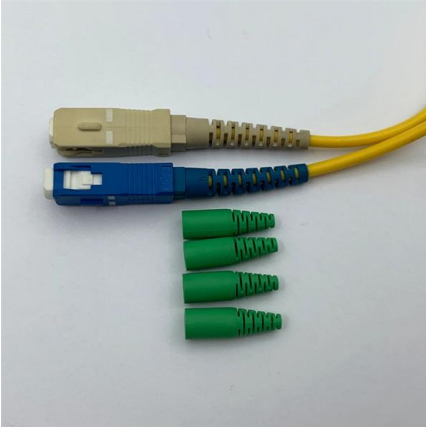
## What is the Check Digit?

How do I calculate the Check Digit? There are two ways you can calculate the Check Digit: - Use GS1 global website's Check Digit Calculator. or. -



## UPC-A Barcode Check Digit Calculator

Here goes the check digit calculation for barcode 810012110099: The digits in odd positions are: 8, 0, 1, 1, 0, 9, their sum is 19, multiplied by 3 it is 57; The digits in even positions (except the last one) are:



### Barcode Check Digit Calculator

The last digit of every type of GS1 identifier is a calculated check digit. In order to ensure that all of the previous data was correctly decoded by a scanner, the



### Barcode Check Digit Calculator

Calculate the check digit for any 12, 13, 14 digit GTIN and SSCC barcodes. Correct check digit ensures readability and decodability.



### Check Digit Calculator , Trustbox

Calculate check digit quickly and easily The check digit serves to secure the recorded data. It ensures that the data has been read in without errors. An incorrect check digit can result in costly corrections.





## GS1 Canada , Check Digit Calculator

The last digit of all numeric fixed-length GS1 Identification (ID) Keys is a check digit, which is required and ensures the integrity of the key. The last digit, being the check digit, is calculated using a simple

### Calculate the check digit

The last digit of a GS1 identification key is a check digit that verifies if the barcode is composed correctly. Use the below calculation model to calculate the check digit.



## Container Check Digit Calculator

Check Digit Calculator What is a Container Check Digit? The container check digit provides a means of validating the transmission accuracy of the owner/operator

### Container Check Digit Calculator

What is a Shipping Container Check Digit? A container number consists of 4 letters (owner+category), 6 serial digits and 1 check digit (last). The check digit is calculated per ISO 6346 by converting letters

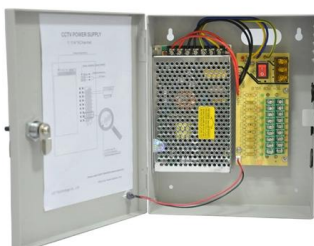


## Finding the Last Digit of a Power

Many mathematical contests ask students to find the last digit (or digits) of a power. In most cases, the powers are quite large numbers such as  $6032^{31}$ ,  $6032^{31}$  or  $89$

## Check digit calculator

The last digit of a barcode number is a computer check digit which makes sure the barcode is correctly composed. Use our check digit calculator below to calculate a check digit.



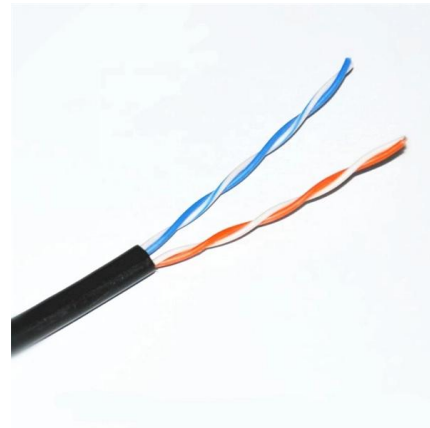
## How to Do Box Method Division (Simple Step-by-Step)

Are you an upper elementary teacher wondering how to do box method division? This step-by-step guide breaks down the box method for long



## Check Digit Validator

Validate your container number's check digit with this calculator. Our freight marketplace helps shippers and carriers validate their container numbers.



## Check digit calculator

All GTINs need a check digit, and this is the last digit of the number. Use Axicon's free check digit calculator here.



## GTIN-14 Data Structure for Logistic Cartons Case Code Marking GS1

GTIN-14 Data Structure  
Creating & Printing  
GTIN-14 Barcodes  
Verifying GTIN-14 Barcodes  
GS1 is the global standards organization for item and logistical identification. Whereas UPC (GTIN-12) are commonly used as the identifier for items which will be read by a point of sale scanner, GTIN-14 data structures are used for logistical packages of items. See more on [barcode.graphics](http://barcode.graphics)  
Boxshot Software



## EAN-13 Check Digit Calculator - Boxshot

Here you can calculate the check digit for EAN-13 barcodes online using our interactive calculator. All the calculations are shown, so you see the math behind the check digit.



## **Barcode Check Digits: What They Are and Why They**

What is a check digit? Simply put, a check digit is an extra number added to a barcode to help detect errors. Barcode check digits are calculated using

## **Contact Us**

---

For datasheets, pricing, or custom telecom energy solutions, please visit:  
<https://koskolong.co.za>