



Adam Tas Corridor Energy

How to change the optical module port





Overview

Identify the alignment key on the SFP module (a small groove or ridge on one side). When you plan to replace a configured optical module with a different type of optical module, you must clear the configurations of the old module before installing the new optical module. Controllers are represented in the rack / slot / instance / port format (r / s / i / p); for example, 0/3/0/1. SFP transceivers allow for the transmission and reception of optical signals in networking devices such as switches, routers, and media converters.



How to change the optical module port

How to Install or Remove SFP, SFP+, QSFP, and XFP



To connect an optical cable to an SFP module, use the appropriate patch cord (e.g., LC-LC, SC-LC, etc.). The patch cord must match the fibre type -

Common Problems And Solutions When Using Optical

As a more sensitive optical device, optical modules sometimes have some problems during use. Below, Telecomate will list some common problems and



Optical Module: Typical Optical Module Troubleshooting Procedure

If it is not a Huawei-certified optical module, replace it with a Huawei-certified optical module. If the optical module is installed on a GE port, run the display interface `GigabitEthernet x/x/x` command to

How to Install and Remove Optical Modules Safely

Carefully slide the SFP module straight into the port slot. Apply firm, even pressure directly along



the horizontal axis. Do not rock, twist, or force the



DETAILS DISPLAY

Focus On Every Detail



01
Neat & Clean Layout
Cleaner arrangement of components. Easy to operate

Typical Troubleshooting Cases of Optical Module

Form a loop on the port using an optical fiber, and check whether the port can go Up (if optical modules with a long transmission distance are used, use optical attenuators.) Check the configuration, such

Understanding Fiber Media Converter Installation:How

Make sure the following ports are available on the converter: Fiber-optic ports (TX/RX) for sending and receiving signals. Ethernet (RJ45) port for the



How to install and remove a optical transceiver

Disconnect the fiber optic cable or network copper cable from the transceiver. Then reinstall the dust plug onto the SFP transceiver. The same is



How To View Port Status And Optical Module Information On Cisco

When optical modules operate on a switch, it is usually necessary to read the module's internal information to understand its working status--such as connection status and real-time



Replacing an Optical Module

Optical modules are electrostatic-sensitive components; therefore, you must take ESD protection measures when replacing optical modules. Do not insert an optical module reversely. If an optical

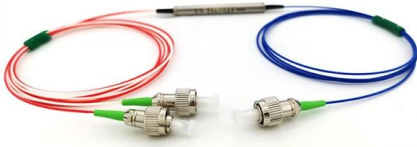
How To View Port Status And Optical Module Information On

Optical modules work on the switch usually need to read the internal information of the module to understand its working status, such as module connectivity and real-time collection of



View the Optical Module Status on a Switch through the

Once the transceiver and fiber optic cable are plugged in properly in the switch optical module, you should be able to view the current information for



Optical Module Installation and Replacement

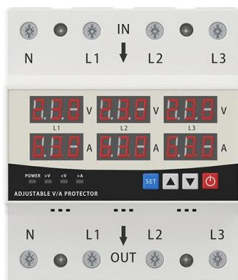
Take out the new optical module from the package. Ensure that the optical module is correctly oriented and gently push it into the optical port until you hear a click.



LED DISPLAY PANEL

CURRENT STATUS CLEARLY VISIBLE

IT CAN CLEARLY SHOW THE CURRENT STATUS AND VOLTAGE STATUS, WITH EFFICIENT OPERATION AND RAPID RESPONSE.



Interface and Hardware Component Configuration Guide for Cisco

When you plan to replace a configured optical module with a different type of optical module, you must clear the configurations of the old module before installing the new optical module.

16 Tips to Troubleshoot Your Optical Transceiver Issues

Optical transceivers are delicate devices and need to be handled with care. Following the tips above can avoid many common problems and ensure





How To Use A Fiber Optic Media Converter In Your

Optimize your network like a pro! Learn from the experts on how to properly implement a fiber optic media converter into your network for optimal

What Is the Optical Audio Port, and When Should I Use

The port is typically labeled "optical audio", "TOSLINK", "Digital Audio Out (Optical)" or something similar, but you certainly don't need a label to identify



How to install and remove SFP/SFP+ transceiver?

Warning: Do not leave the fiber optic transceiver exposed except when inserting or removing fiber optic cables. Safety caps keep the ports clean

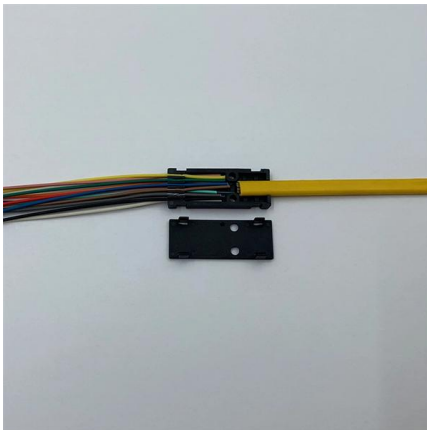
How to install and use the SFP+ Transceiver?

When unplugging the SFP+ optical module, first pull out the optical fiber cable, pull it slowly to the optical port and then slowly pull it out. If you pull it out,



SFP Module Installation and Removal Guide

When using the SFP module, you need to follow the correct steps strictly. The wrong operation will reduce the service life of the modules. This article will tell you how



SFP Optical Transceiver Tutorial on Installation, Removal and

How to install SFP module? How to remove SFP module? What are the precautions to use optical transceivers? This SFP guide tutorial will answer those questions on maintaining



Installing a Network Module

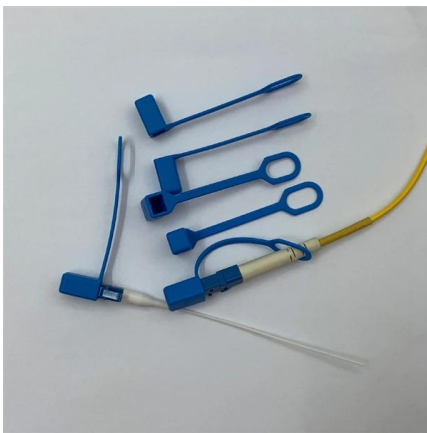
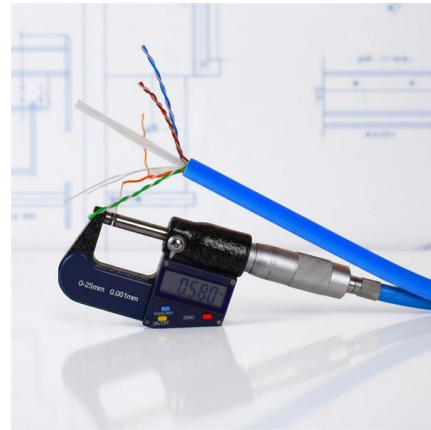
A module must be in the uplink slot at all times. Do not remove the dust plugs from the pluggable transceivers or the rubber caps from the fiber-optic cable until you connect the cable. The plugs and





Configuration Guide for Cisco NCS 1001, IOS XR Release 7.0.1

This chapter describes how to configure the Optical Amplifier Module and Protection Switching Module (PSM). When you plan to replace a configured optical module with a different type



How to Install and Remove SFP Transceiver Modules? - Fiber Optic

To Install an SFP+ Optical Transceiver Module Besides SFP+, SFP, QSFP, SFP28, QSFP28 modules are all referred to as pluggable port modules. All of these modules' installation and

How to install and remove a SFP / SFP+ Transceiver

SFP / SFP+ modules use one of four different latching devices to install and remove the module from a port. The four types of SFP / SFP+ modules latching devices are described.



How to Install and Remove SFP Transceiver Modules?

SFP transceivers allow for the transmission and reception of optical signals in networking devices such as switches, routers, and media converters. In



Optical Transceiver Manufacturer, How To Check Optical

Optical module identification and status monitoring are essential daily tasks for network engineers maintaining Cisco switching systems. This guide provides



Optical Transceiver Module Installation And Removal

The optical port of the optical module is protected by a dust cap to ensure that it is free of dust, dirt, and other contaminants. Select the appropriate



Contact Us

For datasheets, pricing, or custom telecom energy solutions, please visit:
<https://koskolong.co.za>