



Adam Tas Corridor Energy

How to check network loops on a core switch



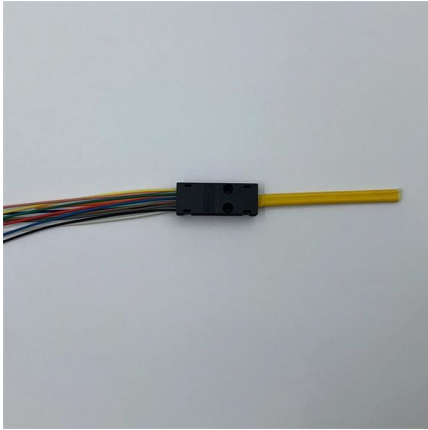


Overview

You can test/check for network loops without disabling any ports by using Loop-Protect and setting the Receiver-Action to "no-disable". If one is detected, it will add an entry to the event log, but will not disable the port. A network loop occurs when redundant connections between switches cause data packets to endlessly circulate, suitable to broadcast storms, high CPU usage, and network congestion. Now at most of our sites we use Extreme, which has a handy feature called ELRP Extreme Loop Recovery Protocol, despite the name, this mechanism just detects loops, in the logs we can see, ok. The problem happening is that the core switch is disabling one uplink configured as a lag to one of the edge cabinets, when viewing the logs on the core, i found the below : LOOP DETECTION: VLAN 102, port lg110 detect, putting into err-disable state after disabling, reenabling the lag ports on the. There is also of course the way to get a hard proof by using Wireshark and a packet capture to check if one and the same frame is appearing with a.



How to check network loops on a core switch



Solved: Method for detecting loops

..

Solved: I am a network tech at a local school district (easily enterprise network). I am just a worker bee, so have no say in the design of the networks. Our topo at a site goes WAN rtr---LAN

loop in my network, easiest way to find it?

Hi! I've got a loop somewhere in my network, and can't seem to find it. Any good advice on where to start looking for it? It takes down a nice portion of



Google

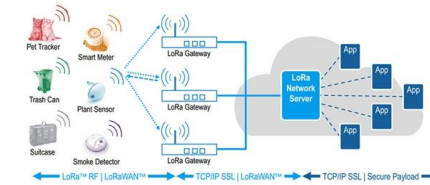
Checking your browser before accessing undefined Click here if you are not automatically redirected after 5 seconds. Checking your browser - reCAPTCHA

switch

Given that spanning tree has failed (or you don't have any spanning tree) and get an ethernet loop, what's the best way to diagnose where the



problem is? Which switch?, which cable? and so on.



How could i identify a network loop?

Our network has since yesterday been dropping packets on the LN and we have been losing connection to local servers, to me, meaning there's a problem on our LAN. we suspect a loop

Solved: RUCKUS Forums

Shams described the types of loop detection correctly. Loose mode can be a bit tricky since it will disable ports if a control packet is looped back anywhere on the same vlan.



Fix Network Loops: Step-by-Step Guide

If left unresolved, network loops can disrupt communication, slow down network performance, and even crash switches or routers. This guide will help you detect





How To Check For A Network Loop Without Disabling Any Ports

You can test/check for network loops without disabling any ports by using Loop-Protect and setting the Receiver-Action to "no-disable". This will allow the switch to check for a loop. If one is detected, it will

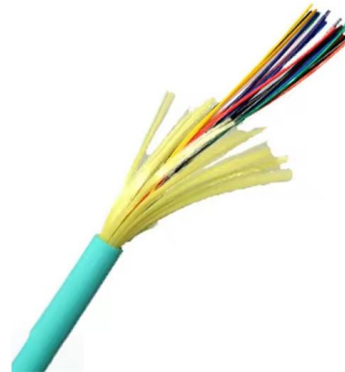


Preventing Network loops on cisco switches

I have the following environment: 2 x 3850 Core switches in stack configuration 9 x C2960X switches redundantly uplinked via 10GB SFP into both Core switches 8 or so VLANS I'm

Discovering Network Loops (Layer 2) with Wireshark

Understanding Network Loops A network loop occurs when there is more than one path exists between the source and destination. Consider the



Loop in switches

But when its a big network say tens or hundreds (may be !!!) of switches are connected, its never easy to pin point the culprit so its better to start with checking the logs of the Core/Distribution layer



Switch

The graphic to the right shows three switches, which are connected in a loop. Sometimes this can happen by accident when connecting cables without knowing



Switch LOOPING

Easy way to spot L2 loops is to notice that some or all traffic will be slow, switch performance is going down; eventually if you do not have any loop-forming protections, traffic should

Crackhead/pass.txt at master · moimikey/Crackhead ·

How to create a web form cracker in under 15 minutes. - moimikey/Crackhead



How to Detect Switching Loop in the network?

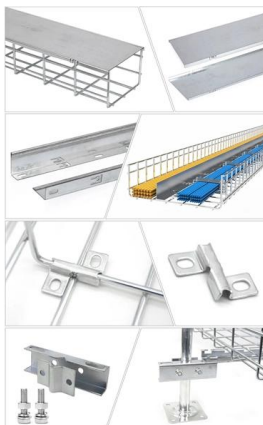
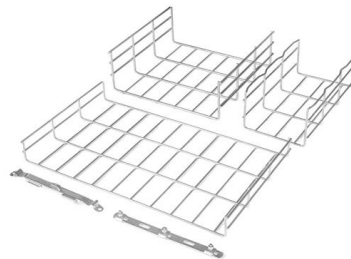


STP is used to avoid switching or bridging loops in the network. If STP is disabled on any one of the switch Loops will occur. In this post, i will be discussing how to detect switching loop in the

Solved: Method for detecting loops

..

It needs some investigation, and a good knowledge of the network topology. I hope these tips help to get you started. The matching actions can be taken enabling the debug for packets in



Wiley Online Library , Scientific research articles, journals, books

Hier sollte eine Beschreibung angezeigt werden, diese Seite lässt dies jedoch nicht zu.



Understand and Mitigate Network Loops (STP)

Identifying network loops can be challenging, but these tips can help: Use UniFi Network Analytics: UniFi can pinpoint the source of a network loop if STP



How to Fix a 500 Internal Server Error

Step 5: Switch to a Default Theme Activate a default theme (e.g., "Twenty Twenty"). If admin is inaccessible, rename your active theme's folder.

Network Loops: The Good, the Bad and the Ugly

Network loops are a bit of a boogeyman. Loops are necessary for a well designed, resilient network - it's the way to achieve redundancy with



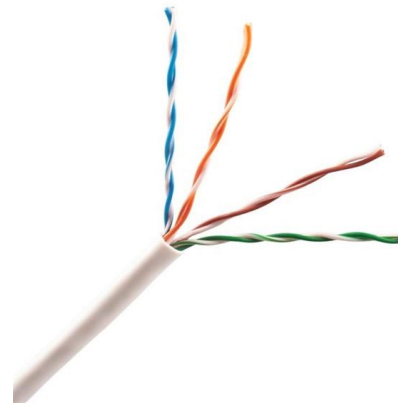
What is loop detection and how does it work on my

Network loops can slow down or stop normal traffic on your network. When your network has a loop, the switch is connected to itself and network



Troubleshoot Layer-2 Loops on Catalyst 9000 Series

Introduction This document describes how to identify and troubleshoot layer 2 loops in networks including Catalyst 9000 series switches.



CMU School of Computer Science

å 10 ä ,EURå ?ä , ? 10 ä ,EURç(TM)¾ 100
ä ,EURç(TM)¾äâ? 100 ä ,EURå ? 1000 ä ,EURå
?â? 1000 ä ,EURâ--<ä ,EUR 101
ä ,EURç(TM)¾é>¶ä

Discovering Network Loops (Layer 2) with Wireshark

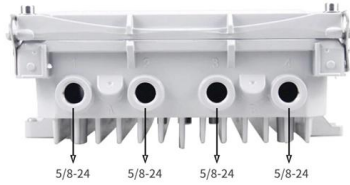
A network loop occurs when there is more than one path exists between the source and destination. Consider the figure below, in which two





Network Loops: The Good, the Bad and the Ugly

The Ugly Network loops become ugly when they're unintentional and STP (or its variants) is misconfigured. Fortunately, STP (or its variants) is a pretty



How to Detect Routing Loops and Physical Loops with a

Learn how to use a packet sniffer to detect routing loops & physical loops in your network topology.



How to detect loop back connection on network switches

Maybe a dumb question. We have 5 network switches (10/100) in our network. Around 75 PC's connected from wall jack=>patch panel=>network switches There are 2-3 network hubs(5 ports)

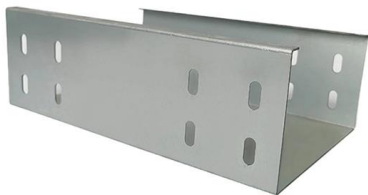
What is a network loop?

When a network loop overwhelms broadcast traffic and degrades network performance, it is called a "broadcast storm". Some NETGEAR switches



Network Loops: The Good, the Bad and the Ugly

If the network is performing very poorly or you are experiencing an outage and this alert fired right before the event then you'll need to check your



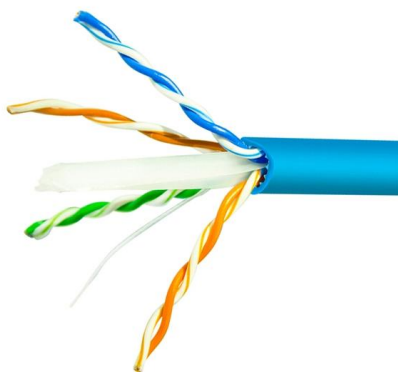
how to find network loops

In my organizational network, I want to find out network loops, We are using unmanageable cisco switch there is any simple way to find network loops Please help



Network Loops: The One Infrastructure Killer You Can

PRTG Network Monitor can give you the visibility you need to spot network loops before they become catastrophic. With bandwidth monitoring,





Contact Us

For datasheets, pricing, or custom telecom energy solutions, please visit:
<https://koskolong.co.za>