



Adam Tas Corridor Energy

How to check the SFP and SFP of an optical module



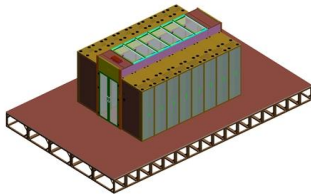


Overview

Additionally, observing the color of the optical module's pull tab is a straightforward way to check it. For this reason, network administrators frequently need to check SFP modules using switch diagnostics, command-line tools, and optical monitoring data. Many enterprise switches from vendors like Cisco and Juniper Networks provide built-in commands that allow engineers to read Digital Optical. In fiber optic networks, optical transceivers such as SFP, SFP+, QSFP28, and QSFP-DD play a vital role in converting electrical signals into optical signals and vice versa.



How to check the SFP and SFP of an optical module



Cisco SFP käskude spikker: oleku kontrollimine ja tõrkeotsing (202

Learn how to check SFP module health on Cisco switches. This guide covers essential CLI commands (show inventory, DOM), fixes for "unsupported transceiver" errors, and interpreting optical power levels.

FN-TRAN-SFP+SR Price

Check FN-TRAN-SFP+SR price and buy FN-TRAN-SFP+SR with best discount. Fast shipping and free tech support.



What is SFP in Network?

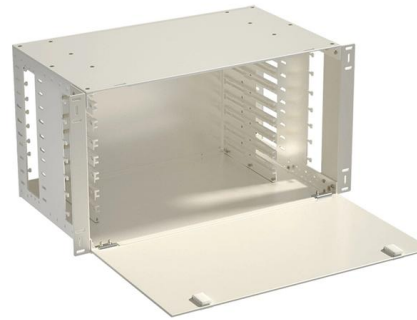
SFP (Small Form-factor Pluggable) is a small pluggable module commonly used in network devices such as switches, routers, etc. It can convert electrical signals into optical signals, or convert

Arista SFP-25G-SR 25GBASE-SR SFP28 850nm Up to 70m New

Overview of Arista SFP-25G-SR 25GBASE-SR SFP28 Transceiver The Arista SFP-25G-SR



25GBASE-SR SFP28 850nm optical transceiver module is designed to deliver high-performance 25 Gigabit



H!Fiber 10G Multimode SFP+ LC Module, 10GBase-SR Fiber

H!Fiber offers one-stop Datacenter solution and products, including SFP Transceivers, DAC Cables, Network Card, Media Converters, Fiber Optical Cables, Minisas Cables and more. We have a professional technical team to provide you with professional pre-sales and after-sales service.

Cisco Command to Check SFP Module Details

For network engineers, knowing how to view and interpret SFP information from the Cisco command-line interface (CLI) is essential. By checking



How to use Ubiquiti SFP ports for fiber optic connections

Extend your network with fiber using SFP ports on UniFi gear. Learn how to choose modules, avoid pitfalls, and set up fast, reliable fiber links.



Mastering Cisco Optics: Understanding TX/RX Light Levels

Stop guessing your fiber health. Discover how to use Cisco DOM commands to measure real-time TX/RX light levels and ensure your optical



How to Check If My SFP Is Single Mode or Multimode

Learn how to check SFP single mode or multimode, and choose the right fiber type and wavelength to keep your network stable.

How to Test an SFP Transceiver and Network Cable

See how to test an SFP transceiver and network cable simply and inexpensively with a live fiber detector. Also, see how to test with an optical power meter.





How to Check SFP Module: Testing and Compatibility

Learn how to check an SFP module using Cisco commands, diagnostics, and compatibility checks. Step-by-step guide to test SFP optics and

10G SFP+ Transceivers - High-Performance Compatible Fiber Modules

10G SFP+ LINK-PP - Lan Transformer - Modular Jack Link-PP 10GbE SFP+ module solutions provide a wide variety of 10 Gigabit Ethernet connectivity options for data centers, enterprise wiring closets,



Troubleshooting Tip: SFP/SFP+ transceivers port/fiber link is not

Description This article describes steps to perform when SFP/SFP+ fiber link is not coming up. Scope FortiSwitch and FortiGate. Solution Things to check if the SFP/SFP+ link is not coming up.

How to Tell if My SFP is Single-Mode or Multimode?

Discover how to identify if your SFP (Small Form-factor Pluggable) module is single-mode or multimode. Look for SM or MM labels, check color coding, and consult manufacturer specs



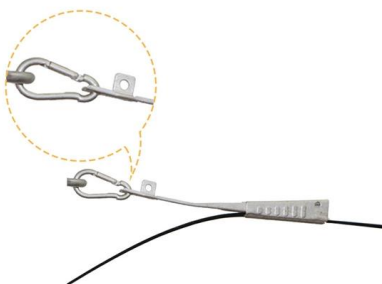
How to Test Optical Transceiver Modules: Methods, Metrics & Best

Learn how to test optical transceiver modules using power meters, BERT testers, and DDM tools. Ensure compatibility, performance, and reliability in data center and enterprise networks.



How to Check SFP+ Module Optical Signal Strength?

When connected to switches, the optical signal strength of SFP modules is a critical parameter to ensure the normal working of the whole connections. This article will



Cisco SFP ?????????????? ?????? ??????????????: ?????????? ????????????

Learn how to check SFP module health on Cisco switches. This guide covers essential CLI commands (show inventory, DOM), fixes for "unsupported transceiver" errors, and interpreting optical power levels.



How do you test a sfp module?

Use an Optical Time Domain Reflectometer (OTDR) or a similar device to test the signal quality of the SFP module. This test measures the strength and quality of



Single Mode SFP Transceiver: Complete Guide Explained

From a technical standpoint, a single mode SFP transceiver supports a small fiber core (approximately 9/125 μ m) and operates at specific wavelengths--most commonly 1310nm or 1550nm --to achieve

How to Test SFP Transceiver: A Practical Lab Guide

Learn how to test an SFP transceiver with the right tools, methods, and pass/fail points for optical power, BER, eye diagram, DDM, and compatibility.



Ishidi Lokukhohlisa Lemiyalo Ye-Cisco SFP: Hlola Isimo Nokuxazulula

Learn how to check SFP module health on Cisco switches. This guide covers essential CLI commands (show inventory, DOM), fixes for "unsupported transceiver" errors, and interpreting optical power levels.



Cisco SFP Commands Cheat Sheet: Check Status

Learn how to check SFP module health on Cisco switches. This guide covers essential CLI commands (show inventory, DOM), fixes for "unsupported



What is SFP Port? Everything You Need to Know

What is an SFP port? The SFP port also refers to a Small Form-factor Pluggable port. It is a compact mechanical slot that accepts an SFP module



Mastering Cisco Optics: Understanding TX/RX Light Levels

What are TX and RX Power Levels? Fiber optic communication relies on light pulses to transmit data. The strength of this light is measured in dBm



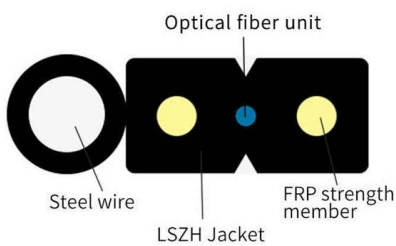


SFP vs QSFP: Which Module Does Your Switch Need? (2025 Guide)

Struggling to choose between SFP and QSFP? Compare speed, density, and cabling costs side-by-side. Discover the best use cases for SFP vs QSFP.

SFP Optical Transceivers: How Pluggable Optics Are Reshaping

1. Introduction: The Pluggable Revolution In the era of hyperscale AI computing and always-on global connectivity, the optical transceiver module has quietly become one of the most



Optical SFP monitoring and light level warnings : r/networking

On the show interfaces diagnostics optics command on Junipers for example, I see there are five categories of alarms: Laser bias current, Laser output power, Module temperature, Module voltage,

Buy Ubiquiti UACC-SFP-Wizard UniFi SFP/SFP+

The Ubiquiti UACC-SFP-Wizard is a dedicated optical module programming and diagnostics tool designed for fast, on-site reconfiguration, testing, and validation of SFP and QSFP transceivers. Built



Optical Module Working Principle , SFP Transceiver Technical Guide

Understanding the working principle of optical modules--especially SFP transceivers--is critical for network engineers, data center operators, and telecom professionals tasked with building and

Contact Us

For datasheets, pricing, or custom telecom energy solutions, please visit:
<https://koskolong.co.za>