



Adam Tas Corridor Energy

How to choose an 80km optical module





Overview

This guide covers the essentials, practical considerations, and technical details you need to choose and deploy 80 km and 120 km SFP modules confidently. Core purpose: Extend optical reach beyond standard SFP ranges (typically 550 meters to 2 km for basic SFPs). Among the optical solutions designed for extended reach, SFP 80km modules are widely used to support stable Gigabit Ethernet transmission over single-mode fiber across long spans without intermediate amplification. You're here to find out which 100G DWDM2 QSFP28 80 or 100G DWDM QSFP28 120 module fits best for your exact needs. Whether you're building a campus backbone, data center interconnects, or carrier-grade links.



How to choose an 80km optical module



Types of Area Network and How Optical Modules Support Them

? How Optical Modules Support Different Network Types Optical modules enable high-speed data transmission over fiber optic cabling and are essential in modern LAN, CAN, MAN, WAN, SAN, and

100G DWDM QSFP28 80 vs 120: Complete Comparison

Compare 100G DWDM QSFP28 80km vs 120km modules. Learn differences in optical budget, power, DCM requirements, and best applications.



Long-Haul SFP Modules: 80km and 120km Solutions

This guide covers the essentials, practical considerations, and technical details you need to choose and deploy 80 km and 120 km SFP modules confidently. Understanding Long-Haul SFP

SFP+ 10G ZR Selection Guide: 80km Single Mode Transceiver

A complete SFP+ 10G ZR buying guide covering 80km reach, specs, compatibility, pricing, and



how to choose the right single-mode transceiver.



Transceiver Optical Module Cisco 10G SFP+ 1560.61nm DWDM

Enhance connectivity using Transceiver Optical Module Cisco 10G SFP+ 1560.61nm DWDM. 80km transmission, 61nm wavelength delivers top-tier.



How to Choose Between SFP, SFP+, SFP28 and QSFP Modules

SFP vs SFP+ vs SFP28 vs QSFP module selection guide. Compare speeds, form factors, compatibility, and choose the right module for ISP networks.



QSFP28 Transceiver: Complete 100G Connectivity Guide (2026)

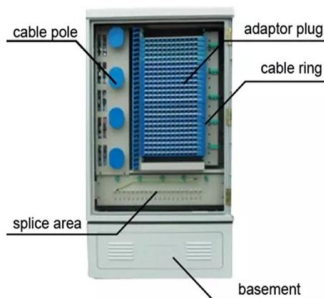
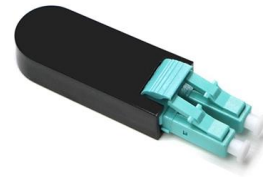
QSFP28 transceiver guide covering module types, pricing, compatibility, and deployment. Learn how to choose, deploy, and troubleshoot 100G QSFP28 optics.





The Most Comprehensive Guide Of Optical Modules

Explore the ultimate guide to optical modules. Learn types, functions, performance metrics & how to choose the right module for your fiber network.



Transceiver Optical Module Cisco 10G SFP+ 1542.14nm DWDM

Fiber Optical Transceiver, Optical Module Cisco Compatible DWDM 10G SFP+ C44 1542.14nm 80km Duplex LC/UPC Single Mode Specifications Various brands-compatible available (Cisco, ARISTA,

Transceiver Optical Module Cisco 10G SFP+ 1530nm CWDM

Enhance connectivity using Transceiver Optical Module Cisco 10G SFP+ 1530nm CWDM. 80km transmission, 1530nm wavelength delivers superior.



How to Reduce Optical Module Costs Without Sacrificing Performance

How to Reduce Optical Module Costs Without Sacrificing Performance In today's rapidly evolving network environments, reducing operational costs is a top priority for data centers, telecom



Transceiver Optical Module Cisco 10G SFP+ 1537.40nm DWDM

Fiber Optical Transceiver, Optical Module Cisco Compatible DWDM 10G SFP+ C50 1537.40nm 80km Duplex LC/UPC Single Mode Specifications Various brands-compatible available (Cisco, ARISTA,



SFP 80km Modules: Performance Analysis of Premium Optics

Explore how SFP 80km optical modules deliver reliable long-distance fiber connectivity. Learn key specifications, performance metrics, and deployment insights.

The Ultimate Guide to SFP Modules (2026): Types,

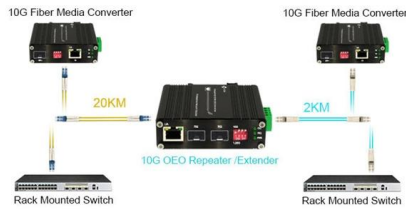
Confused by SFP vs SFP+? Read the definitive 2026 guide on SFP modules. We explain Single Mode vs Multimode, DDM diagnostics, and how to choose the right





Optical module - A comprehensive exploration

The optical module is one of the core devices of the optical communication system, and its development has a vital impact on its related



SFP Module Introduction: SFP meaning, Fiber SFP and

SFP module is the core part of the optical fiber communication networks. This post will introduce everything you should know about SFP transceivers, including what



SFP Optical Module Selection Guide for 2025: Key

Explore our comprehensive SFP optical module selection guide for 2025. Learn about crucial factors like data rate, distance, fiber type, and

What Is a Single Fiber SFP? A Complete Guide for Beginners

Single fiber SFP is an optical transceiver that transmits and receives data over a single strand of single-mode fiber by using two different wavelengths, enabling full-duplex communication while reducing





Understanding Optical Transmission Windows: A Complete Guide for

Discover what optical transmission windows are, how they impact fiber networks, and how to choose the right wavelength for your application. Learn about O-band, C-band, and beyond.

Boost your 80km links to 100G with QSFP-100G-ZR4-S

With the new QSFP-100G-ZR4-S pluggable module, they can get a 10X capacity boost for even their 80km 10G links. Enterprises, service providers,

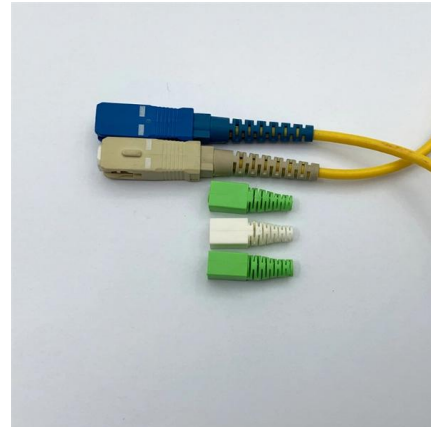


80km SFP Modules: Core Applications & Technical Essentials

Explore 80km SFP optical modules: transmission principles, deployment scenarios, performance features, installation standards, and compatibility best practices for long-haul networks.

SFP-10G-ER Explained: Powering 40km 10Gbps Optical

Laser Type & Cost: Achieving 80km typically requires higher-powered, more expensive cooled DFB lasers and often more complex dispersion



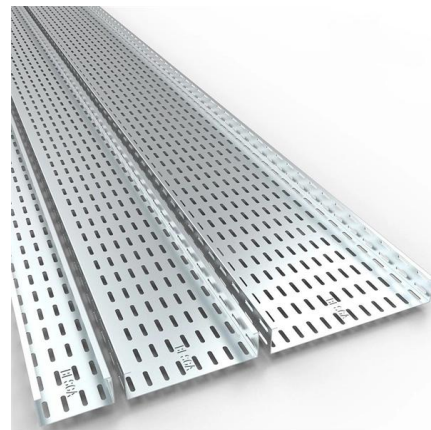
Single Mode SFP Transceiver: Complete Guide Explained

Typical link distances range from 10km to over 80km, depending on the module type and optical power budget. Single Mode vs Multimode SFP Transceivers The primary difference between single mode



Enabling Long-Reach 10G Connectivity: The 80km

Compared to shorter-reach modules (e.g., 10km or 40km), the 80km variant eliminates the need for intermediate signal regeneration, simplifying



Select The Right Fiber Patch Cables For 1G/10G/25G

Deploying optical modules requires the right fiber patch cable. It directly affects network connection stability, performance, and maintenance. This





How to Choose a Reliable QSFP28 100G 80KM Optical Module

However, with a wide variety of optical module brands on the market and complex parameter annotations, it is easy to make a wrong choice. This article will provide a detailed



How to Achieve 80km Reach: The 40G ZR4 Optical Module for Long

In summary, the 40G ZR4 optical module has established itself as a benchmark in the mid-high-end long-haul market by masterfully combining 80km reach, high cost-effectiveness, and

Understanding SFP Modules: Wavelength and Color Codes

? Understanding SFP Optical Modules - Wavelength & Pull Ring Color Codes When working with networking and fiber optics, SFP (Small Form-Factor Pluggable) modules are crucial for connecting



Contact Us

For datasheets, pricing, or custom telecom energy solutions, please visit: <https://koskolong.co.za>