



Adam Tas Corridor Energy

How to configure ports on an all-optical switch





Overview

On the Port settings page, you can configure switch port parameters, including speed, duplex mode, flow control, isolation, mirroring, jumbo frames, discovery protocols (LLDP/CDP), multicast filtering, and energy efficiency settings to optimize network performance and. Entering interface configuration mode: Interface configuration mode is supported only on Ethernet ports. Enabling a port: By default, all device ports are enabled or in link-up state when a device is online. All-optical Ethernet switches are a type of switch that provides optical uplink and downlink ports, making them an ideal choice for building an all-optical campus network. This Article Applies to All GPON OL T Products and all Omada Switches with optical ports. Stacking ports always use the same type of connector and copper PHY, which are built in to the ExtremeSwitching switches.



How to configure ports on an all-optical switch

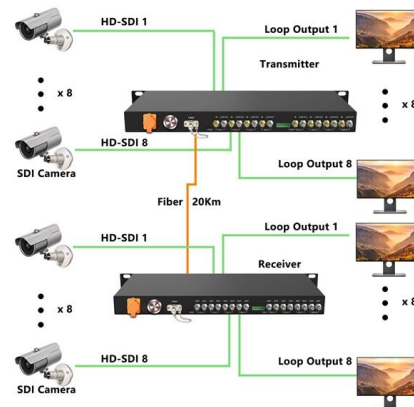


View the Optical Module Status on a Switch through the Command

Once the transceiver and fiber optic cable are plugged in properly in the switch optical module, you should be able to view the current information for the optical connection, which helps

Optical Switch Multichannel Single Mode Multi Mode

Switching Configuration for 1 x 12 Switch The 1 x 12 Optical Switch is equipped with one common optical port (A1) that can be linked to a choice of up to 12 optical ports (B1 to B12).



Cisco Nexus 9000 Series NX-OS Interfaces

When a switch port enters an error-disabled state, you can control how long the port remains disabled before the switch attempts recovery.



Unlock the Power of Connectivity: Explore the 8 Port

Discover the capabilities of the 8 Port SFP Optical Switch, perfect for expanding your network



connectivity with fiber optics and advanced Ethernet



All-Optical Ethernet Switch

All-optical Ethernet switches are a type of switch that provides optical uplink and downlink ports, making them an ideal choice for building an all-optical campus network.



Configuring Switch Ports on AOS-S Switches

Under Manage, click Device. The tabs to configure the switch is displayed. Click Interface > Ports. The Ports page is displayed with the list of ports configured on the switch. The Unsupported transceivers



All-optical switching for data centers

Bring software-controlled all-optical switching in data centers Your data center needs to be streamlined, automated and reliable. With all-optical (OOO) switching solutions in your data center, you will





Introduction to all-optical switching , Department of Physics

What is an all-optical switch? An all optical switch is a device that allows one optical signal to control another optical signal, i.e. control of light by light. The above definition of an all-optical switch is



Port Settings

Learn how to use the Port settings page to configure switch port parameters, including speed, duplex, isolation, LLDP, CDP, and EEE to optimize network performance.

How to configure Optical Line Terminal (OLT) and

Add the port connected to OLT as a tagged port (Here is port 9), and add the port



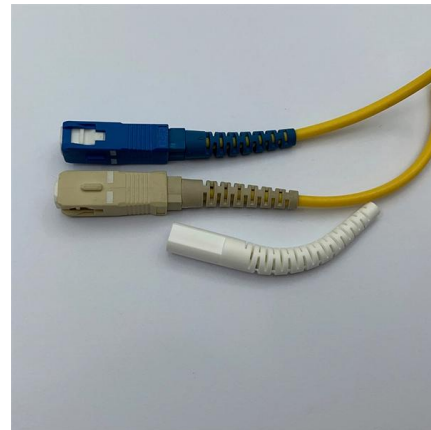
View the Optical Module Status on a Switch through the

Once the transceiver and fiber optic cable are plugged in properly in the switch optical module, you should be able to view the current information for



Configuring Port Channels

Note Cisco Nexus 5500 Series NX-OS Interfaces Configuration Guide, Release 7.x 2 OL-30891-01 Configuring Port Channels Guidelines and Limitations for Port Channel Configuration

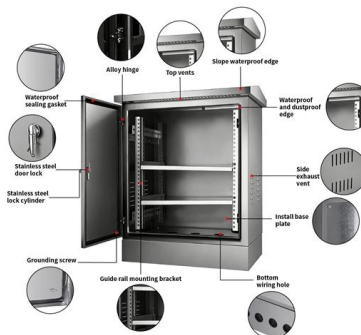


Support

I Integrating access and convergence: Each EPON card in an S7500E switch has multiple physical OLT ports, and each OLT port has 64 logical ports, namely,

All-Optical Ethernet Switch Explained: Features and

Discover what an all-optical Ethernet switch is, how it works, and the key benefits it brings to modern networks, from higher bandwidth to lower latency.





8 Steps to Configure Your Network Switch

Learn how to setup a network switch with ease. Switches allow you to send and receive information efficiently and securely. Get setup today!

All-Optical Switching Tutorial, Part 1

This is the first of a pair of technology tutorials on all-optical switching by Geoff Bennett, vice president of technology advocacy at Marconi PLC (Nasdaq/London: MONI).

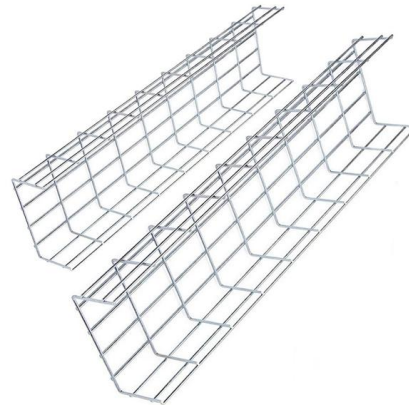


All-Optical Switching in Transparent Networks: Challenges and

Review of optical switching, trends and needs for high-speed switching in optical networks. The latest developments in all-optical switches are discussed.

What Is an All-Optical Ethernet Switch?

All-optical Ethernet switches are a type of switch that provides optical uplink and downlink ports, making them an ideal choice for building an all-optical campus network. They can function as



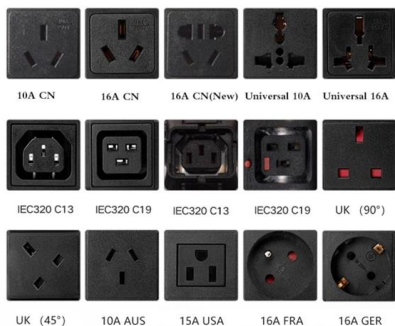
MEMS 1XN Optical Switch spec , Hirundo optics Inc

Customized Solutions: Our R& D team works closely with you to tailor product parameters (insertion loss, switching time, port configuration) to your unique project requirements.



Port Basic Configuration

How to Configure Basic Port Settings The following sections provide configuration information for basic port settings.



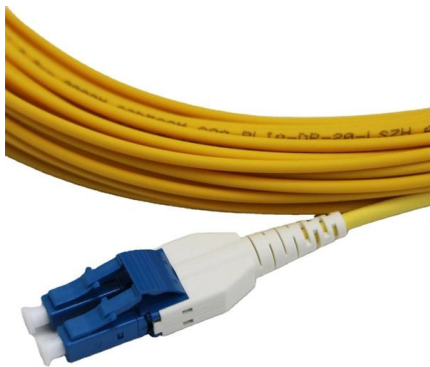
ExtremeXOS® User Guide

Autonegotiation determines the port speed and duplex setting for each port (except 10 and 40 Gbps ports). You can manually configure the duplex setting and the speed of 10/100/1000 Mbps ports.



Cisco Products: Networking, Security, Data Center

Explore Cisco's comprehensive range of products, including networking, security, collaboration, and data center technologies

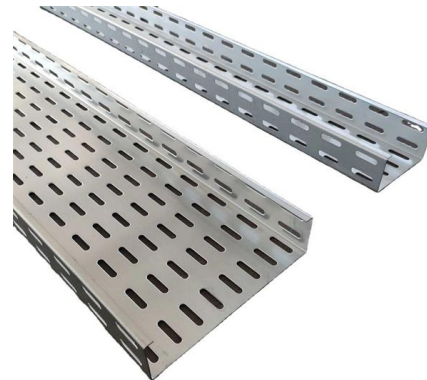


What is an Optical Switch?

An optical switch is a multi-port network bridge, which connects multiple optic fibers to each other and controls data packets routing between

Dell Networking PowerSwitch Layer 1 optical troubleshooting

Dell does not guarantee that third party or unqualified optics work reliably, or at all. Configuration considerations Port speed, negotiation, and FEC settings must match across the link. For example, if



Fiber Optic Switch VS All-optical Switch, What is Optical

Optical switches have fiber optic switches & Ethernet switches, all-optical switches, optical keyboard switch, optical mouse switch and more types



Configuring Attributes for an Optical Interface

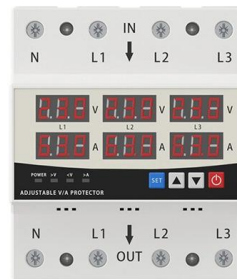
The configuration personnel can pre-configure the transmission medium type on optical interfaces and configure functions on the interfaces. These functions take effect after the installation



All-Optical Ethernet Switch Explained: Features and

An all-optical Ethernet switch is a network switch whose service ports are entirely optical, meaning every interface uses fiber rather than copper. This

LED DISPLAY PANEL CURRENT STATUS CLEARLY VISIBLE IT CAN CLEARLY SHOW THE CURRENT STATUS AND VOLTAGE STATUS, WITH EFFICIENT OPERATION AND RAPID RESPONSE.



All-Optical Switching Tutorial, Part 1

All-Optical Switching Tutorial, Part 1 A down-to-earth description of all-optical switches * What they are* What they do* How they work





How do you connect a switch to fibre?

Configuration Errors: Double-check the network switch configuration for any errors or misconfigurations that could be affecting the connection. By following these steps

Contact Us

For datasheets, pricing, or custom telecom energy solutions, please visit:
<https://koskolong.co.za>