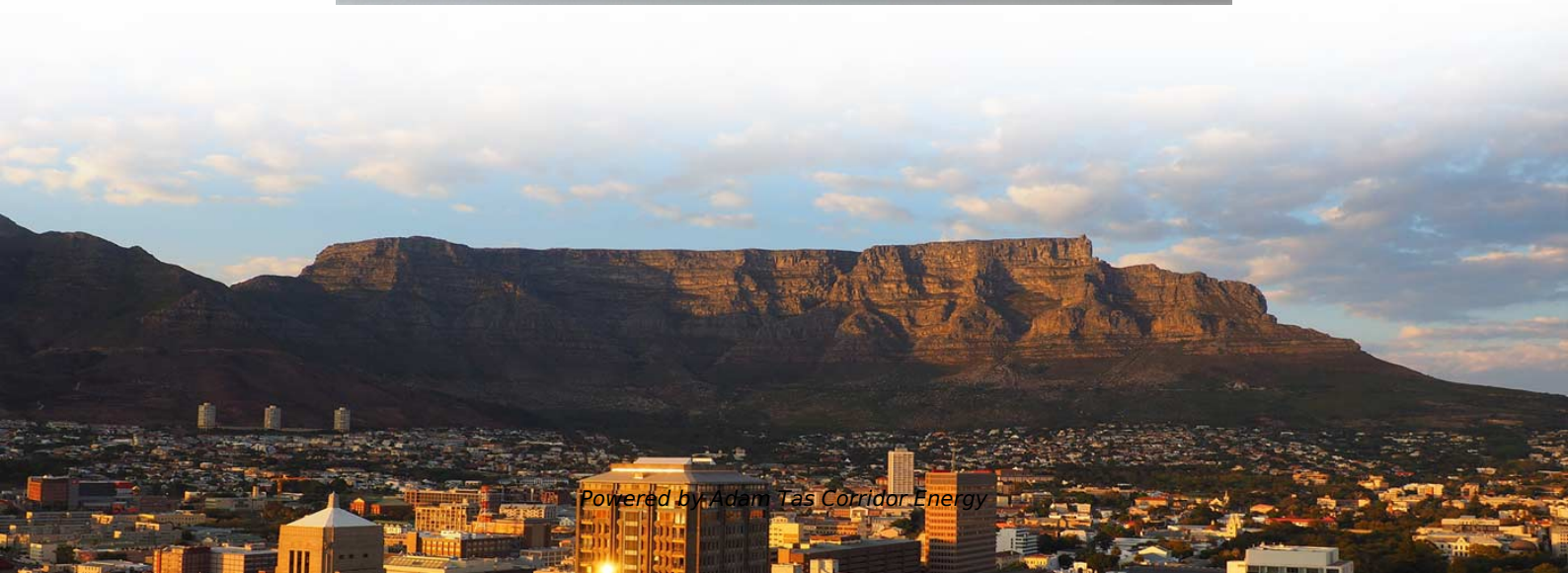




Adam Tas Corridor Energy

How to connect a 12-core fiber optic terminal box





How to connect a 12-core fiber optic terminal box



12 Port Outdoor Fiber Optic Distribution Box , AZE

AZE's Fiber optical distribution box is used as a termination point for the feeder cable to connect with drop cable in FTTx communication network system

All You Need To Know About Fiber Termination Boxes: Installation

Types of Fiber Optic Cables
What Is A Fiber Termination Box?
Fiber Termination Box Installation Procedure
Maintenance of Fiber Termination Box
In network cabling, outdoor connections generally use fiber optic cables. When these optical fibers are installed or laid out, a Fiber Termination Box, or FTB, is used to distribute and protect the optical fiber links in FTTH networks. The fiber termination box is an interface between the fiber cable from the line side and the pigtailed to be passed to See more on stl.techtopfiberbox



12 Port Fiber Splice Termination Box for 1x8 Mini - Topfiberbox

See More

This box comes with one cable inlet and 12 output port, supporting up to 12-core splice. It is made of engineering plastic that provides mechanical protection for fiber splice and joint; the screw lock



FTTH SC Fiber Terminal Box With 4 Ports, 4 Cores Splice

Description The 4 port fiber termination box is a surface mount enclosure designed to connect optical fiber cable with pigtail in FTTH/FTTB/FTTD application. The small

Illustration of How to Connect the Terminal box in FTTH solution

The outdoor optical fiber cable is connected to the terminal box. The purpose is to fuse the optical fiber and the pigtail in the optical cable, and lead it out through a jumper.

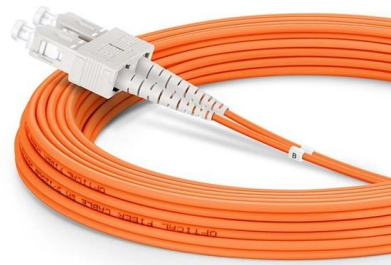


6 Core Fiber Distribution Box Fiber Optic Terminal Box FTTH CTO Joint Box

This terminal box terminates up to 12-24 fiber optic cables, offers spaces for splitters and up to 12-24 fusions, allocates 6 x SC Duplex adapters or 6 x LC Quad adapters and working under both indoor

12 Cores Fiber Optic Fusion Splicing Terminal Box-ARTIC FIBER

Function: This terminal box is designed to protect fiber optic splices and facilitate the distribution of fiber connections in FTTx (Fiber to the Home/Building) networks.



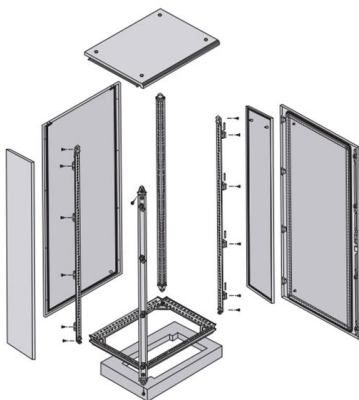


Fiber access terminal installation tutorial, FTTH outdoor gel sealed

You are watching the video tutorial of aerial installation of fiber optic termination box FODB-8. Visit our web for more information: <https://>

12 cores fiber splice box ftth fiber optic distribution box

Its core use is to terminate fiber optic cables and connect the cable's core and pigtail. The typical termination box consists of three parts, the fiber connector protection



What equipment is needed for fiber optic internet?

Fiber optic internet is the fastest, most reliable, and newest internet connection technology. More and more people use fiber optic internet in their

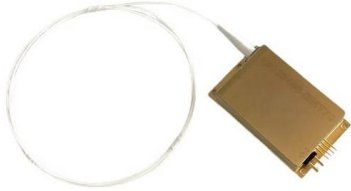
16 Core Outdoor Fiber Optic Distribution Box IP65 FDB FTTH Terminal Box

This 16-core Fiber Distribution Box (FDB) is a professional outdoor optical termination enclosure designed for FTTH access networks. Made of high-quality PC+ABS plastic with UV-resistant and





Fodb 12a 12 Core Fiber Optic Terminal Box



storage and cable connection in one solid protection box. Water-proof design with IP-66 Protection level. Integrated with splice cassette and cable management rods. Manage fibers in a reasonable fiber

Fiber Optic Terminal Box 6 Ports

Discover 6-port fiber optic terminal box with IP65 rating, CE/ROHS certified metal housing for FTTH/FTTX networks--ideal for reliable, high-speed data connections.



All You Need To Know About Fiber Termination Boxes: Installation

Types of Fiber Optic Cables
What Is A Fiber Termination Box?
Fiber Termination Box Installation Procedure
Maintenance of Fiber Termination Box
In network cabling, outdoor connections generally use fiber optic cables. When these optical fibers are installed or laid out, a Fiber Termination Box, or FTB, is used to distribute and protect the optical fiber links in FTTH networks. The fiber termination box is an interface between the fiber cable from the line side and the pigtails to be passed to See more on stl.techtopfiberbox

12 Port Fiber Splice Termination Box for 1x8 Mini - Topfiberbox

[See More](#)



This box comes with one cable inlet and 12 output port, supporting up to 12-core splice. It is made of engineering plastic that provides mechanical protection for fiber splice and joint; the screw lock

24 Port Outdoor Fiber Optic Distribution Box , AZE

Overview AZE's Fiber optical distribution box is used as a termination point for the feeder cable to connect with drop cable in FTTx communication network system.



Fiber Wall Outlet Box With 1 SC Duplex Adapter Port, 2

Description The large single port SC duplex wall outlet serves as a termination point, designed to connect two optical fibers via pigtailed in FTTH or FTTB applications. It

High-Quality Fiber Optic Terminal Boxes

Fiber Optic Terminal Box (FTB) is a compact fiber optic management product. It is widely used for FTTx cabling of optical fiber and cable, providing an ideal solution



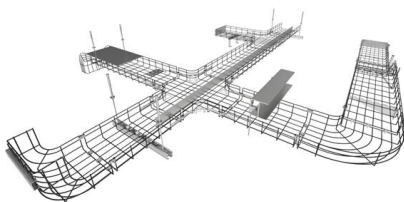
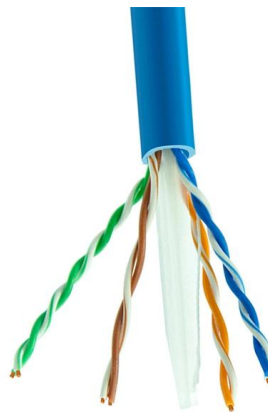
Fiber optic junction box, Fiber optic terminal box



Find your fiber optic junction box easily amongst the 67 products from the leading brands (HUBER+SUHNER, BOPLA, METZ CONNECT,) on DirectIndustry, the

Fiber Terminal Box vs Junction Box: Key Differences

The fiber optic terminal box includes the outer shell, internal components (support frame, fixed fiber tray, clamp), and fiber optic connector



12 Port Fiber Access Terminal Box For Steel-tube

This 12 port fiber access terminal box is designed to connect feeder cables to subscriber drop cables for FTTH last-mile fiber connectivity. It integrates fiber

1x8 PLC Fiber Splitter 12 Core SC SM FTTH Fiber Optic Terminal

The splitter termination box is suitable for fiber terminal point to complete connection, distribution and scheduling between perimeter fiber cables and terminal equipment, especially suitable for mini





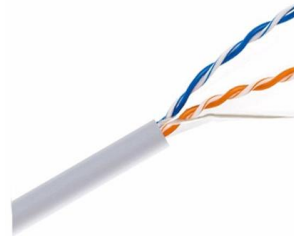
12 Core Fiber Optic Terminal Box

Lay the left fiber in the melting and connecting tray evenly, and fix the winding fiber with nylon ties. Use the trays from the bottom up. After all the fiber has been connected, cover the top layer and fix it.



4-Core Single mode Fiber Optic Cable

4-Core Single mode Fiber Optic Cable also called 4-core Optical fiber cable, is a type of communications optic cable which has the same transmission speed as

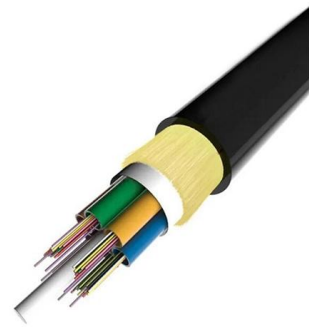


Indoor/Outdoor 8 Core Fiber Optic Termination Box

Our FAT-8T 8 core fiber optic termination box brings you seamless integration and efficiency to FTTx network systems. Streamlined Connectivity

12 Port FTTH Fiber Distribution Box for 1x8 Blockless

The indoor & outdoor 12 port optical distribution box supports 2 entry cables with dia \leq F12, Which accommodates a 1x8 mini PLC splitter for 20 cores splice.



FTTH Distribution Terminal Box, FTTH Fiber Optic

Fiber Optic Termination Box is used in the end termination of drop cables in residential buildings and villas, to fix and splice with pigtails. UnitekFiber supplies

Contact Us

For datasheets, pricing, or custom telecom energy solutions, please visit:
<https://koskolong.co.za>