



**Adam Tas Corridor Energy**

# **How to connect a switch to a network rack**





## How to connect a switch to a network rack

---

### Back to Basics: How to Rack a Switch



When a switch is mounted using screws in only the top holes of the ears, it creates a very small space between the fulcrum and the load; which usually results in a

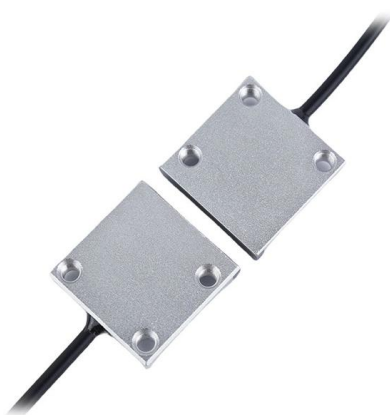
### 8 Steps to Configure Your Network Switch

Learn how to setup a network switch with ease. Switches allow you to send and receive information efficiently and securely. Get setup today!



### Installing the Switch in a 4-Post Rack

To install the switch, you must attach the front and rear mounting guides to the switch, install the slider rails on the rear of the rack, slide the switch into the slider rails, and secure the switch to the front of

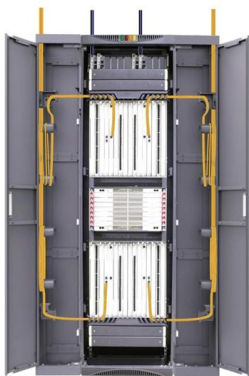


### How to Install a Network Switch in a Rack , FS

FS PicOS® switches, equipped with Broadcom chipsets, are managed by the AmpCon(TM)



management platform, delivering high-performance, scalable networking solutions for data centers and campuses.



### How to Mount a Network Switch to a Rack?

So how do you mount a network switch to a rack to establish network wiring connections? Here's a step-by-step guide to teach you how to mount a

### 3 Installing the Switch in a Rack

When populating empty chassis slots, start filling the upper slots first and work down to the bottom slots. This chapter describes how to install Catalyst 4500 series switches in a rack. For first-time



### How to Correctly Wire a Network Rack? - VCELINK

Discover how to wire a network rack with step-by-step instructions, expert tips, and best practices.





## How to Install Patch Panel and Switch?

Learn best practices for patch panel and switch setups, including how to connect patch panel to switch and use Ethernet patch panel cable



## How To Wire a Server and Network Rack , Tips & Best

Network racks are designed to house switches, routers, patch panels, and other structured cabling system local area network (LAN) gear to facilitate

## Fast Track to Rack Installation and Power , Juniper

This procedure guides you through the simplest steps for the most common installation to get your EX9208 switch in a rack and connect it to power. Have



## Attach the Switch to a Rack or Cabinet

To attach a switch to a four-post rack or a cabinet, follow these steps. Take care to load the rack so that it is not top-heavy. Start installing equipment at the bottom



## Rack Mount Switches Decoded: A Comprehensive

In addition to efficient data transfer, rackmount switches also contribute to network organization and management. They provide a centralized point for



## Installing a network switch on server rack 201703

Installing a network switch on server rack 201703 SuperSimple Howto Tutorial in Technology 8.7K subscribers Subscribe



## How To Install A Network Switch

Learn how to install a network switch with this comprehensive guide. Get step-by-step instructions for setting up your ethernet switch and optimizing

50KW modular power converter



### Flexible Configuration

- Modular Design, Expanding as Required
- Small/light, Wall Mounted
- Installed in Parallel for Expansion



### Powerful Function

- Support PV/ESS
- Grid Support, Equipped with SVG Technology
- On-Grid and Off-Grid Operation



### Reliable Protection

- Custom IP20 Design
- Sufficient Protection Functions Equipped

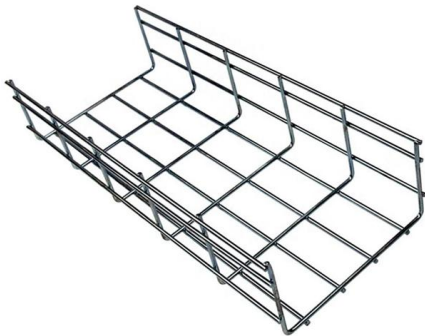


## A Comprehensive Guide on Rackmount Switches

Rackmount switches have been recognized as the most important networking device. They enable the simultaneous transmission of data packets more

### Network Rack for Small Office (Build Guide)

Network Rack for Small Office (Build Guide) July 9, 2025 by Hayden James, in Blog General Last week I walked into an empty 5 x



### Mounting Configurations, Network Switch Setups

When mounting a switch to a rack, start by selecting the appropriate rack unit (U) based on the switch's size. Use mounting brackets or rails to secure the switch to

### Attach the Switch to a Rack or Cabinet

Connect the other end of the wire to a known reliable earth ground point at your site. After the switch is secured to the rack or cabinet, install optional components



## How to mount switch in rack--Entire switch rack

How to mount switch in rack--Entire switch rack installation Guide A clean and secure server rack isn't just for looks--it's the foundation of a stable



## How to mount switch in rack--Entire switch rack

Whether you're setting up a new data center, a server closet, or a home lab, knowing exactly how to mount a switch in a rack is an essential skill.



## 3 Installing the Switch in a Rack

Rack-Mounting the Switch A standard rack-mount kit is included for mounting the switch in a standard 19-inch (48.3 cm) equipment rack with two unobstructed outer posts, with a nominal depth (between





## Server rack cabling best practices

So we just ordered upgrades for all of our switches and firewalls in our main rack in the server room which, to be honest, is a rats nest of cables. I've



## Mastering the Art of Rack Mounting: A Comprehensive

Discover the essentials of rack mounting with our comprehensive guide. Learn about durable rack enclosures, installation tips, and network switch

## Support

- To ensure stability of the rack, install the slide rails to the lowest possible position when installing a single switch in the rack. To install multiple switches in the rack, mount the heaviest switch at the



## Contact Us

---

For datasheets, pricing, or custom telecom energy solutions, please visit:  
<https://koskolong.co.za>