



**Adam Tas Corridor Energy**

# **How to connect the ground wire of an outdoor power distribution box**





## Overview

---

At both ends — at the main panel and at the outlet — the ground wire must be securely connected: In the main panel, connect the ground wire to the grounding bus bar. Here are some methods to get power from inside your home to an outside appliance or receptacle not fastened to the house (e. Find the grounding bar or PE bar Open the distribution box and find the position marked with the grounding plate or PE letter. Watch our video to see the complete Outdoor Ground Box installation process from start to finish.



## How to connect the ground wire of an outdoor power distribution box

---



### How to Ground Electrical Wires

Ground wires must be firmly connected at all points. And if conduit or sheathing is used as a ground path, connections must be tight. If you're not sure

### How to Connect Ground Wires

Learn more What to do if there is no ground wire, how to connect ground a ground wire to a metal box, a light switch or a receptacle or connect ground wires together.



### How to Install Outdoor Electric Wiring Above & Below

A step-by-step guide for powering your property Wiring an outdoor circuit is not always difficult. Here are some methods to get power from inside

### How To Ground A Circuit Breaker Box Safely: A Step-by



Examine Your Main Panel: Open the cover of your main circuit breaker box. Look for a thick, bare copper wire or a green-insulated wire. This



### How to Connect a Ground Wire to a Circuit Breaker

Connecting a ground wire to a circuit breaker is not a difficult job, but you do need to administer care and attention to be entirely safe. Step 1 - Prepare



### How to Run Electrical Wiring Outside , Family Handyman

There's a better and safer way than using an extension cord to get power in your garden shed. We'll show you how to wire it the right way.



### How do you ground a plastic electrical box

Here are the steps on how to ground a power distribution box: 1. Preparation: First, you need to prepare some necessary tools, including





## How to Ground Outdoor Electrical Outlets Properly

At the outlet box, connect the ground wire to the green grounding screw on the receptacle. If using a metal box outdoors, bond the box as well by connecting a pigtail from the ground wire to a



02

High Quality Material



High hardness to resist external impact, Good Shaping Performance Good Look and Anti-rust



## 200 AMP Electric Service COMPLETE Installation , Everything

In this video, we show you how to properly install a New 200 amp power/electric service underground from the closest power pole to the garage. We show you st

## How to Connect a Ground Wire to an Electrical Outlet

This way, if a ground fault is detected, special circuitry switches power off at the outlet. You will need to consult the instructions for the GFCI regarding



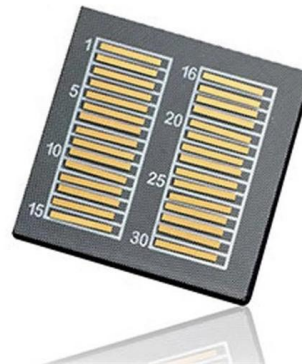
## Grounding System Installation Standards for Distribution Boxes and

Whether you're a seasoned pro or just starting out, this comprehensive guide will give you practical insights into proper grounding techniques, with a special focus on how selecting quality materials



## Reuters , Breaking International News & Views

Find latest news from every corner of the globe at Reuters , your online source for breaking international news coverage.



## DISTRIBUTION BOX

Attach a ground wire from one of the threaded studs (A) at the bottom of the housing, to the mounting plate (B). Attach a second grounding wire from the mounting plate (B), to the factory

## Correct Connection Method Of Grounding Wire Of

Following the above steps and precautions can ensure the correct connection of the distribution box grounding wire, thereby ensuring the safe





## Correct Connection Method Of Grounding Wire Of

Generally, copper core wire is selected as the ground wire and connected to the PE wiring bar. When connecting, it is necessary to strip the wire

## How to Install Outdoor Electric Wiring Above & Below

Wiring an outdoor circuit is not always difficult. Here are some methods to get power from inside your home to an outside appliance or

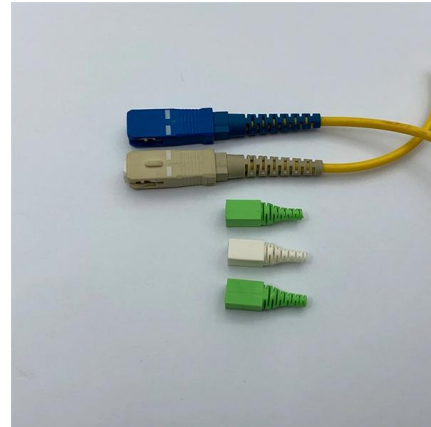


## Grounding Essentials: Where to Connect Your Ground Wire

Locate the ground bus bar inside the panel. It is usually green or bare metal and connects directly to a grounding electrode. Attach your ground wire securely to the bus bar using a screw,

## How to Add an Outdoor Electrical Box (DIY) , Family

Add an outdoor electrical box to get power to where you need it, especially for holiday lights. Do it safely and easily.



## electrical

But actually, the neutral bar is connected to the metal box. My second question is that I am installing a 240V/20A outlet which doesn't need neutral wire,



## Outdoor Ground Box Installation Video , Legrand

Watch our video to see the complete Outdoor Ground Box installation process from start to finish. View now.



## How to Install an Electrical Outlet from Scratch

In order to install an electrical outlet and circuit from scratch you need a roll of 14-2 or 12-2 Romex® cable (depending on how much load you need from the outlet) and either a new work box, or an old work box.





## Grounding System Installation Standards for Distribution Boxes and

Hey there! If you're working with electrical systems, you know that grounding isn't just some bureaucratic requirement--it's literally the difference between a safe, functional system and a potential disaster.



## Electrical Box Ground Wire Connectors & Connections

How to make proper & safe electrical ground wiring connections in the box: This article describes options for connecting a metal electrical box to the grounding conductor & connecting the grounding

## A Step-by-Step Guide to Wiring an Electrical Panel Box

Find out how to properly wire an electrical panel box with a comprehensive diagram and step-by-step instructions.



## How To Ground An Electrical Panel: 8 Steps With Video

While a ground wire is not strictly necessary for electrical equipment to function properly, licensed electricians are always careful about attaching this



## How To Run A Ground Wire To An Electrical Panel Box

Your service panel's ground wire prevents a line fault from becoming a shocking experience. By shunting excess line voltage back to the panel's neutral pole, the ground current



## Contact Us

---

For datasheets, pricing, or custom telecom energy solutions, please visit:  
<https://koskolong.co.za>