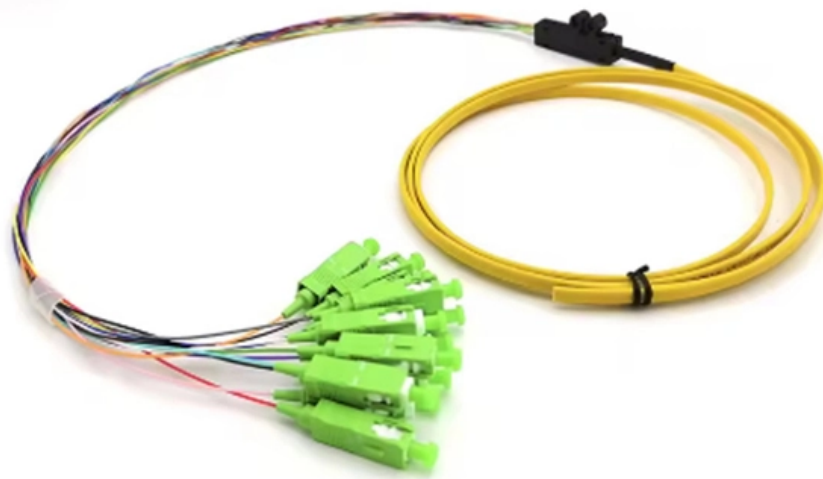




Adam Tas Corridor Energy

How to connect to the core switch from the public network





How to connect to the core switch from the public network



Solved: Core Switch

Pretty simple, you just plug the optical transceiver into the switch port for that transceiver type. Of course, this assumes you're using the correct transceivers and fiber between the devices

To configure TRUNK Links from Distribution to Core or just ACCESS

Since Core SW and Distribution SW have the vlan 200 configured in them, link connection from DSW1 to CSW1 are of access vlan 200, while CSW1 to CSW2 link was configured as trunk native vlan 200.



Connecting Core to Access switches

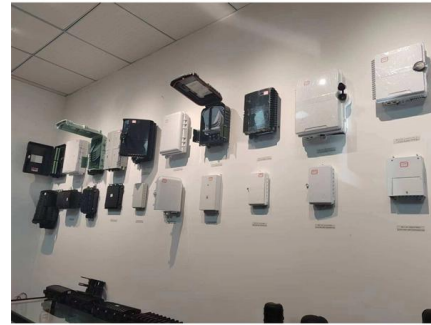
I would recommend at least 2 copper runs per switch, which you can then put in a port channel, so that you have 2 Gbps of uplink for all of your edge switches. If you are planning on just

Core Switches: The Pillar of Network Infrastructure

Core switches, as the name suggests, form the core or central part of a network, connecting



several other switches in a network infrastructure. These



Public Wifi guide for the Switch : r/NintendoSwitch

I know the Switch isn't even out yet. On my Xbox, I thought I couldn't get onto a public network because it wasn't bringing up the login page. I did some research and I found out how to do it. Here are some

Best practices when configuring an Access switch stack to Core

Make sure the core switch is the root bridge, and enable portfast and BPDU guard on all access interfaces. Do your routing on the core switch, with an L3 transit to the firewall.



Smart Home and Business Control + Automation , RTI

Smart control and automation From the boardroom to the classroom to the dining room, RTI control and automation elevates every commercial and residential setting.



How to Configure a Cisco Switch (step by step)

If you're looking to configure a switch for the first time, this post is for you. Learn step-by-step configuration commands for Cisco IOS Switches.



Core Switch vs Access Switch , Definitions and Key Differences

The core switch is the backbone of your network. It's the most important piece of equipment because it connects all your other switches and routes traffic between them. The access

Chapter: Connecting the Switch to the Network

To create a management connection to the switch, you must connect a management port on the switch to an external hub, switch, or router. To prevent an IP address conflict, you must



How to Set up a Wireless Network (WiFi) Connection

Do you want to create a solid home network for all of your wireless devices? If you want to use a network or access the internet wirelessly, you'll



Core Switch vs. Distribution Switch vs. Access Switch

Core Switch vs. Distribution Switch vs. Access Switch: Understand Their Roles in Ethernet Networks Ethernet networks are growing and becoming more complex,



connecting core switch to the internet

- Buy a set of switches to facilitate the layer-2 connection between the routers and to connect the outside of the ASA's. - Instead of buying 2 new

How to Switch the Network Profile from Public to Private

When prompted to turn on network discovery and file sharing for all public networks, select No, make the network that I am connected to a private





8 Steps to Configure Your Network Switch

Follow these simple best practices to set up a new network switch. Just like riding a bicycle, nobody's born knowing how to setup a network switch. And this process is a little more advanced than, say,

Big Data Archives , TechRepublic

Big Data is happening now. Learn about the tips and technology you need to store, analyze, and apply the growing amount of your company's data.



Accessing other switches from core switch

Hi guys, I have a basic and a silly question. I have an old catalyst switch and I want to connect these 2 switches together. One of them will be used as

Understanding the Core Switch: Key Differences and Uses

Explore the core switch's role as the backbone of your network. Discover key differences, uses, and insights into layer 3 core switch technology.



Core Switch vs. Distribution Switch vs. Access Switch

Comprehensive guide to Core, Distribution, and Access Switches. Roles in the network and important parameters explained.



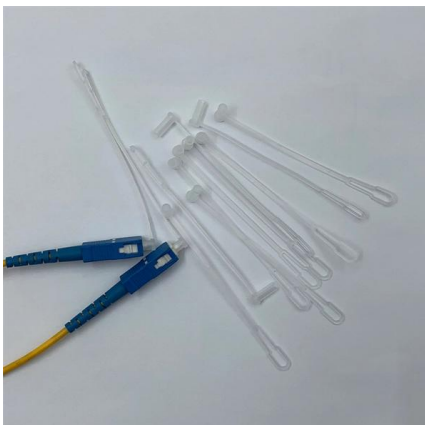
Understanding Core Switch: What It Is and How to

In the realm of system networking, three key types of switches are frequently mentioned: access switches, aggregation switches, and core switches.



Connecting core switches

Hi all, complete newbie here. I am following the CBT Nuggets CCNA course and am trying to connect all my equipment up. In regards to the core





How to find core switch

Hi, Can anyone help me to find out that connected switch is core switch. Is there any command or trick to find it. There are 7 switches connected but unable to find which is core one .

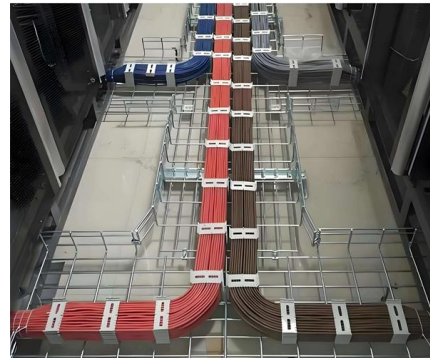


Tech & Work Archives , TechRepublic

Kevin O'Leary's Wonder Valley data center project faces scrutiny as job estimates shift and Utah residents raise environmental concerns. If you can only read one tech story a day, this is it

What is a Core Switch , Functions and Difference over Normal Switch

The core switch and its layer are the most important portion of the entire network because its primary function is to create an optimal and dependable backbone transmission structure.



Configuring the Core Switch to Be Managed by the Controller

Context To manage a core switch, you need to run commands on the core switch to connect it to iMaster NCE-Campus. This section uses the NETCONF over SSH callhome mode as an example for core



Cushman & Wakefield , Commercial Real Estate

A global commercial real estate services leader, we will never settle for the world that's been built, but relentlessly drive it forward..



8 Steps to Configure Your Network Switch

Learn how to setup a network switch with ease. Switches allow you to send and receive information efficiently and securely. Get setup today!



Contact Us

For datasheets, pricing, or custom telecom energy solutions, please visit:
<https://koskolong.co.za>