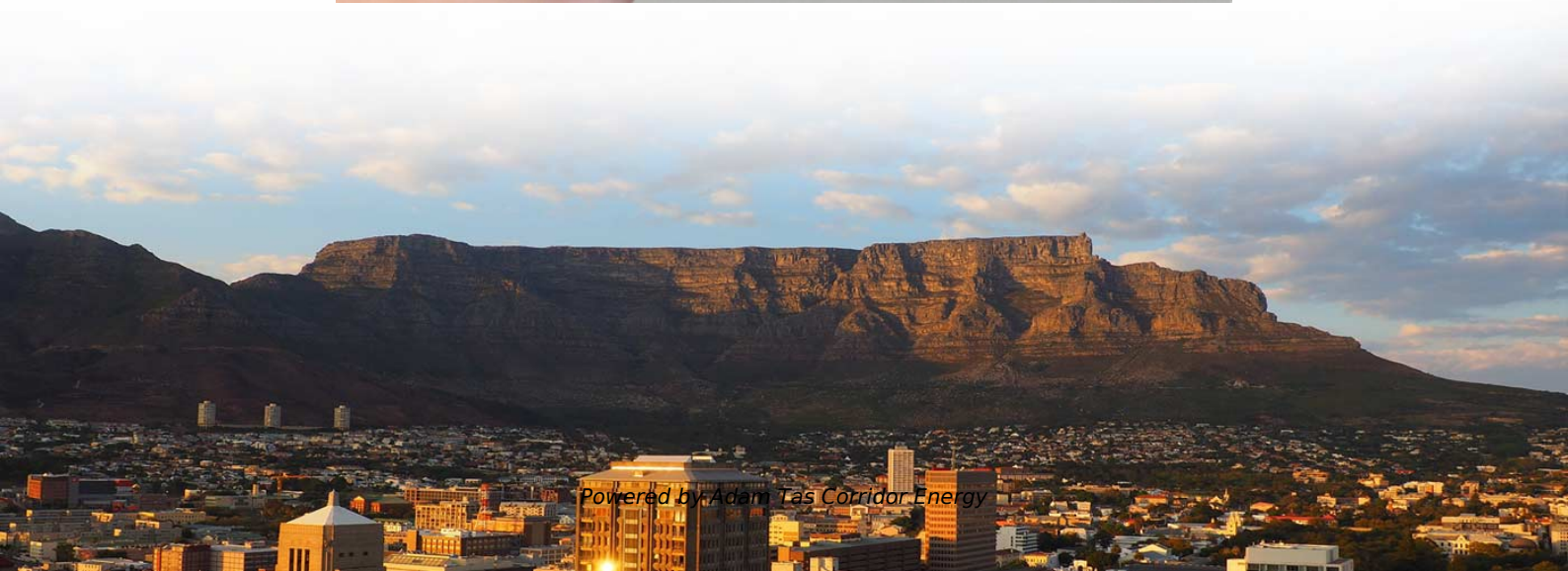
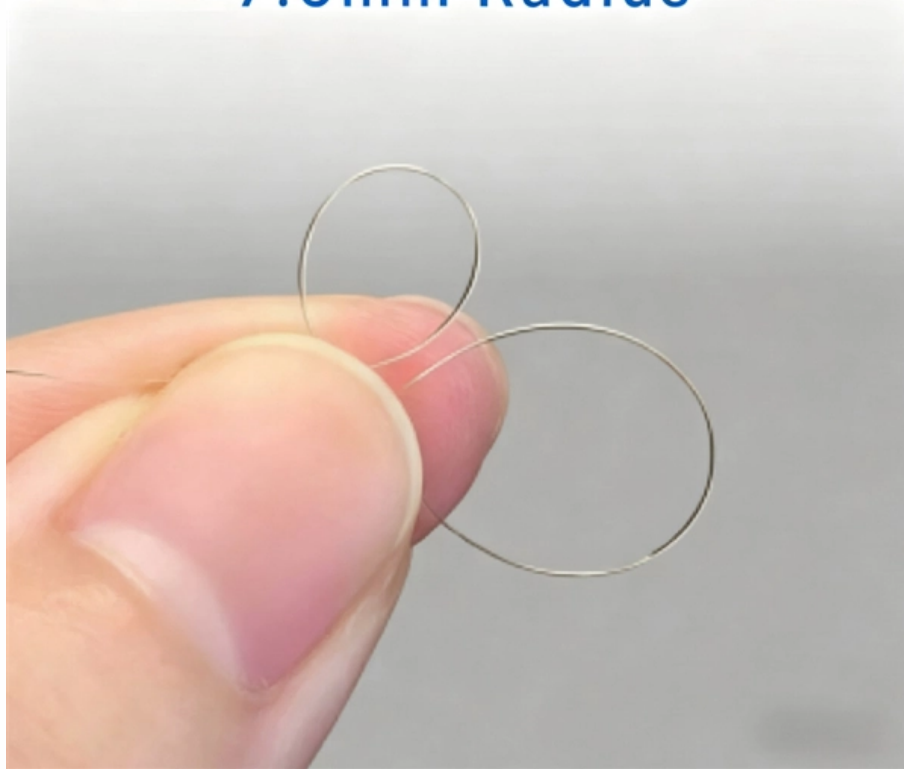




**Adam Tas Corridor Energy**

# **How to deal with adhesive residue on ceramic ferrules**

7.5mm Radius





## How to deal with adhesive residue on ceramic ferrules

---



### Best Practices for Preparing and Dispensing Epoxy

This ongoing series of articles by Fiber Optic Center experts discuss best practices to bond optical fiber to the ceramic ferrule. Our goal is to shed light

### LC and Angled LC Connectors with Preradiused Ceramic Ferrules

This procedure describes the installation of the Corning heat-cure LC fiber optic connector with preradiused ceramic ferrule or preground angled ceramic ferrule.

Various specifications optional



### How to Safely Remove Glue Residue , RS

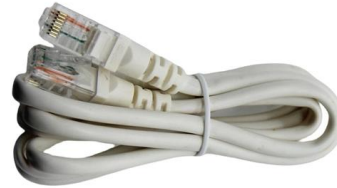
Heat the residue with a hairdryer on a low to medium setting to soften the glue, holding the hairdryer a few inches away and moving in circular motions. Once the adhesive has softened,

### Etching(Ferrules(to(Prepare( for(Epoxy(Bond Etch

o Adhesive Failure o Bondline failure where all of the adhesive material remains with one of the



substrates and the failure surface is very smooth  
o All of the adhesive material is stuck to the bamboo

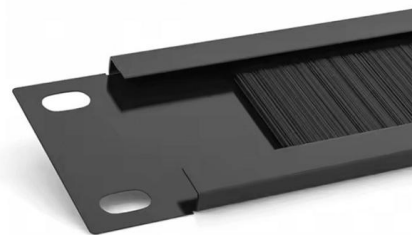


### How to Remove Adhesive Without Damaging the Surface

Peeling off a sticker often leaves behind a sticky, stubborn residue. This tacky film, usually composed of synthetic polymers, can seem impossible to remove without scratching or

### Polishing Adhesives for Fiber Optic Ferrules: 7 Key Lessons for

Understanding the nuanced relationship between adhesive formulation, ceramic ferrule compatibility, and polishing protocols is essential for anyone involved in fiber optic connector manufacturing.



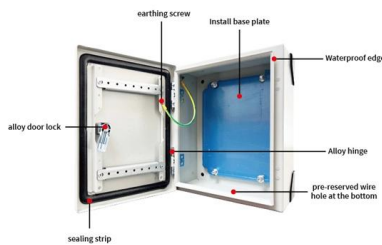
### Bhise Ceramics Pvt. Ltd: Ceramic Ferrules

Bhise Ceramics Pvt. Ltd. is a provider of quality advanced ceramic products. Our products have been tried out by a wide range of world class companies and we



## FERRULES: SMALL COMPONENTS, MASSIVE IMPACT

Ceramic ferrules play a crucial role in waste heat boilers (WHBs) by protecting the critical tube-to-tubesheet joints from high temperatures and corrosive environments. Their high



## How Do I Remove Adhesive Residue? - Tile Topia

For adhesive residue on delicate tiles such as ceramic tile, glass tile, or marble effect tile, oil-based solutions are a great starting point. Vegetable oil, olive oil, or even

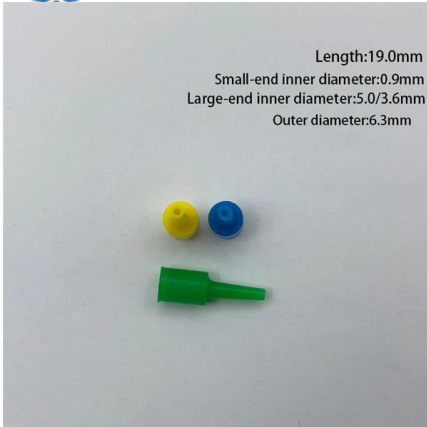
## Ceramic Ferrules for Boiler Tube Protection , Refshape India

Refshape Ceramic Ferrules Refshape manufactures refractory ceramic ferrules for industrial boiler tube protection. Our ferrules are produced from high-alumina ceramic compositions and held to



## How to Remove Super Glue From Ceramic , 11 Easy

Conclusion In conclusion on how to remove super glue from ceramic, removing super glue from ceramic surfaces may seem like a daunting task, but



## Ceramic Ferrules Ensuring Precision and Durability in Welding

Precision Ceramic ferrules are essential to ensuring strong welds in drawn arc welding processes, serving to contain and distribute the molten metal while preventing any splatter for clean



## CERAMIC FERRULES - ALFA TECHNICAL CERAMICS

Ceramic Ferrules are used at the inlet of the Shell & Tube type heat exchanger to protect the tube inlets from hot gas corrosion and abrasive particle erosion.

## How to Remove Adhesive From Ceramic Tile

However, acetone does not damage ceramic. And since acetone can also dissolve glue residue, you may want to try this chemical on ceramic to see if





## Superglue vs epoxy for ferrule install?

I will state the most obvious problem with super glue for thread on ferrules is that I have seen them stick before getting threaded all the way on. Once it is on it will probably be strong enough

## Ceramic Ferrules for Secure and Efficient Industrial Connections

Efficient Connectors Ceramic ferrules are used in drawn arc welding to hold and shape the molten pool of metal between stud and workpiece, keeping it within its designated boundaries and protecting it



## Application Sheet

Dry cleaning the barrel of a ceramic ferrule with the Chemtronics Ultrajet All-Way compressed gas duster is a very effective means of addressing this problem. However, there are instances where

## How to Remove Epoxy or Adhesive From Broken

A practical ceramic repair lesson explaining how to remove old adhesive, epoxy, super glue and other glues before re-repairing broken pottery, porcelain or sculpture.





## **Crackhead/pass.txt at master · moimikey/Crackhead ·**

How to create a web form cracker in under 15 minutes. - moimikey/Crackhead

## **The Best Methods for Removing Adhesive Residue**

Applying heat softens the adhesive, weakening the bond to the surface. Use a standard hairdryer set to low or medium to warm the residue for 30 to 60 seconds. Once the adhesive is

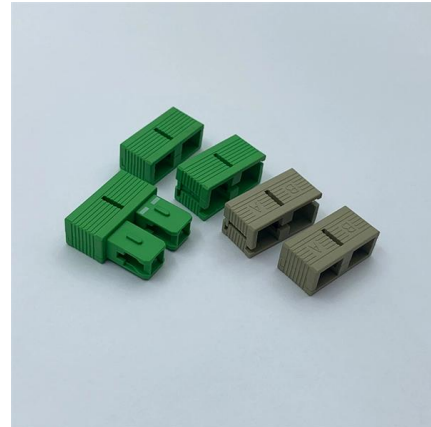


## **Precast Ferrules for Heat Exchangers**

This document summarizes Blasch ceramic ferrules used in petrochemical refining processes. The ferrules provide effective protection for waste heat boilers and

## **ST®-compatible Epoxy and Polish Connectors with Preradiused**

With the syringe pointed up, hold onto the connector and slowly inject epoxy. The moment epoxy is visible at the tip of the ferrule, turn th syringe horizontally and continue injecting epoxy until the connect



### **This Is the Most Effective Way to Remove Adhesive**

Next, I scrubbed it with the same brush to try to get the label and adhesive residue off and also ran it under hot water while doing the same. I did



### **Ceramic Ferrules Ensuring Precision and Durability in Welding**

Industrial Standard ceramic ferrules, more commonly referred to as standard ceramic ferrules, are the go-to choice in stud welding applications due to their versatility and cost efficiency.



### **How to Remove Ceramic Tile Adhesive , Detailed Guide**

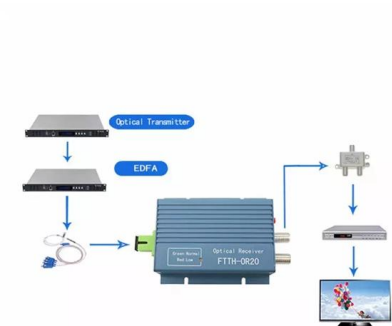
Renovating or replacing tiles involves choosing new designs and effectively dealing with old adhesives. Understanding how to remove ceramic tile





## Restoring Ceramics: Adhesive Removal Essentials

Learn the essential techniques and best practices for removing adhesives from ceramics, a crucial step in the conservation and restoration process.



## Secure Connections with Ceramic Ferrule within Fiber Optic Connectors

1. Low Loss Ceramic ferrules are essential components of fiber optic connectors that ensure precise alignment of optical fibers for efficient transmission of data transmission and

## Restoring Ceramics: Adhesive Removal Essentials

Restoring ceramics to their original glory requires a deep understanding of the materials and techniques involved. One crucial step in the conservation and restoration process is the removal



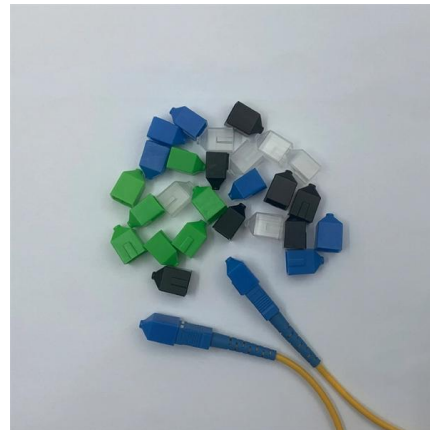
## Know The Basics Of Ceramic Ferrules In Regards To Fiber Optics

At Refractory Shapes Ltd, we specialize in high-precision ceramic components, including the tiny but crucial ceramic ferrules that form the backbone of modern fiber optic networks.



## How to remove super glue from tiles--the ultimate guide

Fixing a cracked tile is simple using super glue, but inevitably, you will get spillage onto the surface. Don't despair, to find out how to remove super glue from



## Contact Us

---

For datasheets, pricing, or custom telecom energy solutions, please visit:  
<https://koskolong.co.za>