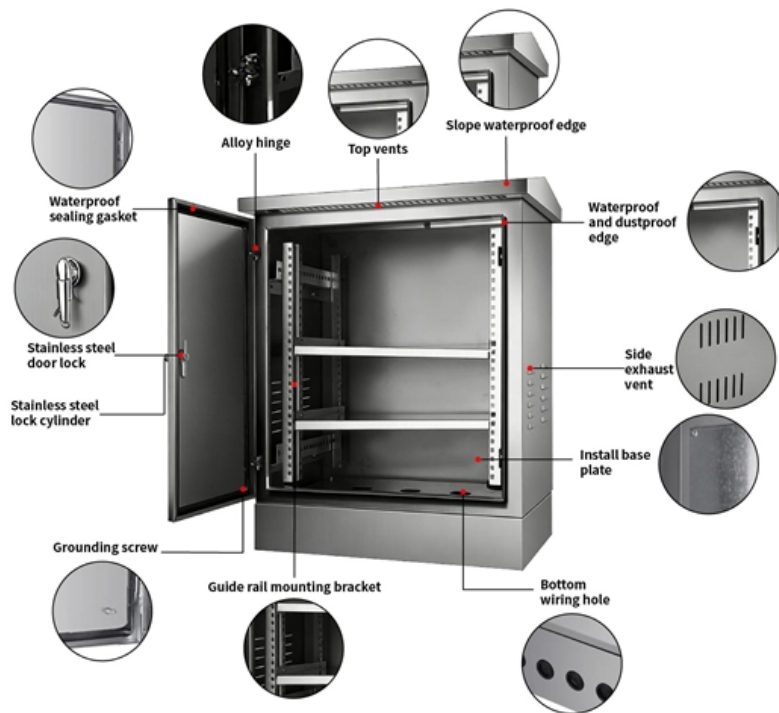




How to distinguish between single-mode fiber optic patch cords





Overview

Single Mode (OS1/OS2): A single mode fiber patch cord is almost universally yellow. Before identification, it's important to understand the fundamental difference between. These short fiber optic cords connect transceivers, switches, patch panels, and servers. As data rates increase from 10G → 100G → 400G → 800G, patch cables must handle more bandwidth, more density, and stricter. This guide cuts through the jargon: single-mode vs multimode, LC vs MPO, UPC vs APC, and every specification that actually matters when you're spec'ing out a real deployment. Before diving into detailed technical comparisons, the five most critical differences between single mode fiber patch cords and multimode fiber patch cords can be summarized as follows: Difference 1: Transmission Distance — How Far Should a Fiber Patch Cord Reach?

Single mode fiber patch cords are.



How to distinguish between single-mode fiber optic patch cords



Multimode vs Single Mode Fiber Patch Cords: Which

Find out how to choose between single mode patch cord, lc lc single mode, sc lc single mode, and duplex OM3 multimode fiber for reliable network

Fiber Optic Patch Cord Performance Testing

In the realm of high-performance optical networks, the humble fiber optic patch cord (or jumper) plays a critical but often underappreciated role. As an



Fiber Optic Patch Cord Differences: Single Mode vs

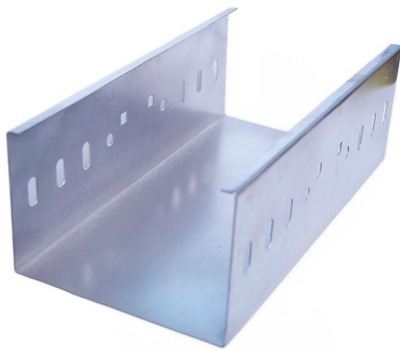
Explore the differences between single mode and multimode fiber optic patch cords. Learn about the advantages and applications of each type.

What Are The Differences Between Single-mode And

We can distinguish between single mode and multimode by transmission mode. Single mode



fiber supports one mode, while multimode fiber

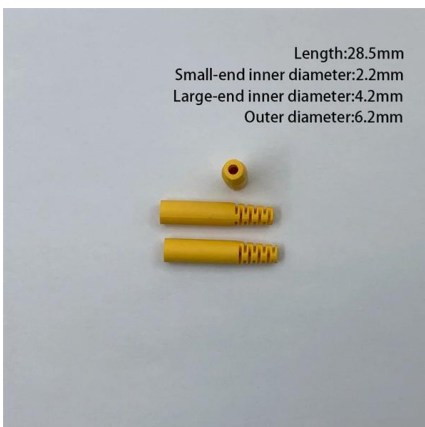


Fiber Optic Connectors & Ceramic Ferrules , SC, LC, FC, ST, MPO

High-precision Fiber Optic Connectors and Zirconia Ceramic Ferrules for superior network termination. Shop widely used types (SC, LC, FC, ST) and termination kits suitable for Single-mode and Multi

Single-Mode vs Multimode Explained - Patch Cords Online

Single-mode sends a single light mode straight down the fiber, eliminating modal dispersion and low attenuation. That's why telecom carriers run



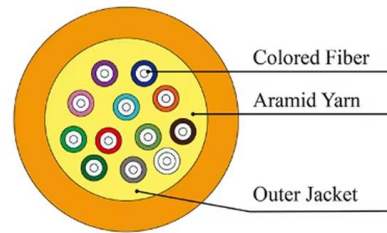
How to Identify Single Mode and Multimode Fiber Patch Cord?

This guide will walk you through practical, field-ready methods to distinguish between single mode fiber patch cables and multimode fiber patch cables, while also clarifying the key



Fiber Optic Patch Cables: The Complete 2026 Buyer's Guide

Confused by LC, SC, MPO, UPC, and APC? This complete fiber optic patch cable guide covers connector types, single-mode vs multimode, insertion loss specs, and how to choose the right



What is a fiber optic jumper? What is a tail line? What's

Fiber optic cable and fiber optic transceiver (couplers, jumpers, etc. are also used between them). Pigtailed are divided into multimode pigtailed and

Single Mode vs. Multimode Fiber: Key Differences and

Discover the key differences between single mode and multimode fiber optic cables, including core size, bandwidth, distance, and cost. Learn how to



Single Mode VS Multimode Fiber Patch Cord: What Are

What is Multimode Fiber Patch Cord? The multimode fiber patch cord uses multimode fiber, with connectors at both ends, used to realize the



Comparing Single-Mode and Multi-Mode Fiber Optical

Where Does Single-Mode Shine?

Telecommunications giants, data centers, and sprawling enterprises turn to single-mode fiber optical patch cables

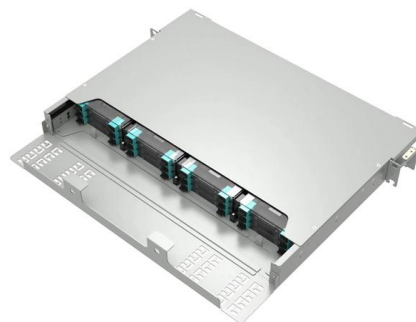


Fiber Patch Cord Types and Mode Conversion

This article explains classification of fiber patch cords and methods for converting between multimode and singlemode links. Fiber patch cords are fundamental components of optical network

Amazon : Lc Single Mode Fiber Patch Cable

Yonwida Single Mode Fiber Lc to Lc 1m (3.28 ft) 5 Pack, OS2 Single Mode Fiber Patch Cable Duplex, Singlemode Fiber Optic Cable Lc to Lc, LSZH SM Jumper Cord, Yellow SMF 1 Meter 100+ bought in





SOPTO

A deep-dive into the technology of fiber patch cords. Learn about Single-mode vs. Multimode, LC/SC/MPO connectors, UPC/APC polish types, and critical selection criteria for high



Fiber Optic Color Code Guide: Decoding Connector and

This guide decodes the crucial color codes on fiber optic cable jackets, patch cords, and connectors (UPC, APC, MPO), linking visual cues directly to



Fiber Optic Color Code: The Ultimate TIA-598-C Guide

Master the TIA-598-C fiber optic color code standard. Read our complete guide and use our free interactive calculator to easily identify 1-144 core cables.

FR 1.6mm 3.5m Green SC Simplex SM SX Fiber Optic Patch Cord: A

The FR 1.6mm 3.5m Green SC Simplex SM SX Fiber Optic Patch Cord offers low insertion loss, bend-resistant G657A2 fiber, and reliable performance in high-density data center environments, ensuring



Single Mode vs. Multimode Fiber Optic Cables

There are two main types of fiber optic cables: single mode fiber and multimode fiber. Single mode fiber optic cables feature a narrow core diameter,

What Does Each fiber colour in Fiber Optic Cable

Learn what each fibre colour means in fiber optic cables. OMC FTTH explains standard colour codes and their network applications.



Indoor / Outdoor Armored Anti-Rodent patch cord

We are a Indoor / Outdoor Armored Anti-Rodent patch cord LC/SC/FC/ST Duplex Single mode Fiber Optic Cable Patch Cord Manufacturer. We supply fiber optic



12 core MTP Fiber Optic Patch Cord with 3.0mm Round Fiber Cable

MPO patch cables are available in 3 different wire map configurations: Straight, Total Flipped or Pair Flipped. MPO patch cables are available in multi-mode and single-mode fiber cable.



Fiber Patch Cables Explained 2025: Types, Connectors,

Choosing the wrong type of patch cable can cause signal loss, downtime, or higher costs. This guide explains what fiber patch cables are, their

5 Key Differences OEM Buyers Must Know Between

Understand the 5 key differences between single mode and multimode fiber patch cords. This OEM guide covers distance, bandwidth, transceiver cost,



CMU School of Computer Science

ä¹<é--´ between é--´ between é¥®æ-(TM)
beverages æoeEUR beverages å>°æ?'
bewilderment ä¹<å¸- beyond å¸- beyond è ¯å, ^
bhaisajya è ¯å, ^å½> bhaisajya æ¯"ä, ~ bhiksu
æ¯"ä, ~å¼ bhiksuni å OE bi



Fiber Optic Adapter Guide: Types, Tips & Solutions

Fiber optic adapters play a critical role in ensuring stable and low-loss fiber connections. This guide covers adapter types, selection criteria, cleaning



Understanding Fiber Optic Patch Cords: Single-Mode

Explore the differences between single-mode and multi-mode fiber optic patch cords for indoor and outdoor use. Learn about their applications and

All Kinds of Fiber Optic Patch Cords - SC, LC, FC, ST

Learn about SC, LC, FC, and ST fiber optic patch cords, their uses in FTTH, telecom, and data centers, and how to choose the right type.





Contact Us

For datasheets, pricing, or custom telecom energy solutions, please visit:
<https://koskolong.co.za>