



Adam Tas Corridor Energy

How to ground the circuit from the distribution box ground wire





Overview

Attach a ground wire from one of the threaded studs (A) at the bottom of the housing, to the mounting plate (B). The correct connection method of Distribution box grounding wire mainly includes the following steps: 1. Preparation: First, you need to prepare some necessary tools, including grounding wire, grounding rod, voltmeter, insulating gloves and insulating tools. Whether you're a seasoned pro or just starting out, this comprehensive guide will give you practical. However, for experienced DIYers, this guide provides a detailed, step-by-step approach to ensuring your circuit breaker box is properly grounded, enhancing electrical safety grounding throughout your home.



How to ground the circuit from the distribution box ground wire



Busbar

Distribution boards split the electrical supply into separate circuits at one location. Busways, or bus ducts, are long busbars with protective covers. Rather than

How to Wire a Home Distribution Box

How to Wire a Home Distribution Box - Step-by-Step , Distribution DB box wiring diagram
Welcome to our channel! In this video, we'll walk you through



How to Ground a Metal Electrical Box: A Step-by-Step Guide

Learn how to ground a metal electrical box in 3 easy steps. This guide will walk you through the process, from identifying the grounding point to connecting the ground wire.

Electrical Panel Grounding and Bonding

The Electrical Path Main Panel The panel that's located directly after the electric meter is the



main service panel. Three wires come from the electric meter and go



How to Ground Electrical Wires

How to Ground Wires in Metal Boxes In a system with metal boxes, the pigtail method is considered the most secure. In this arrangement, both the



How To Ground A Circuit Breaker Box Safely: A Step-by

However, for experienced DIYers, this guide provides a detailed, step-by-step approach to ensuring your circuit breaker box is properly grounded,



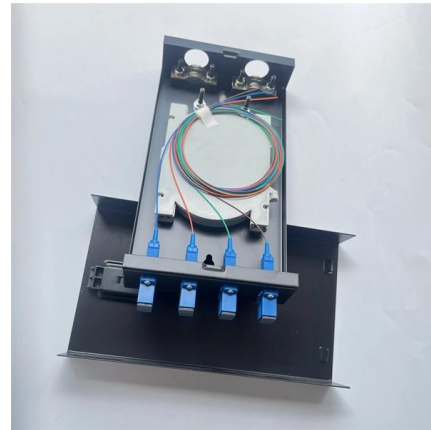
The Importance of Ground Wires in the Breaker Box: A

A breaker box, also known as an electrical panel or distribution board, serves as the main hub for electricity in a building. It houses the circuit breakers that control the



How & Why to Ground Wiring

Install grounding wire to provide current with alternate paths to avoid electrical shocks in case of power surges. Run ground wires parallel to hot and neutral wires in a branch circuit.



Method for making the ground wire of a household distribution box

Connect one end of the insulated copper wire to the grounding grid and lead the other end into the distribution box and connect it to the ground bus bar of the distribution box.



how do you ground a plastic electrical box

Here are the steps on how to ground a power distribution box: 1. Preparation: First, you need to prepare some necessary tools, including



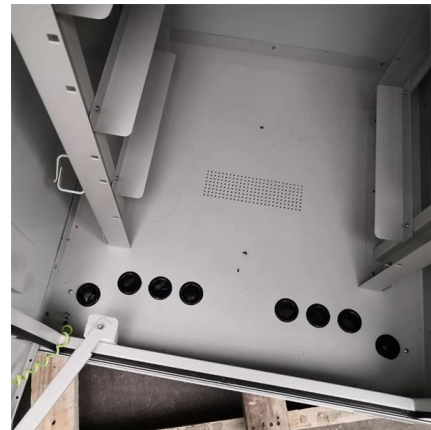
How To Run A Ground Wire To An Electrical Panel Box

Your service panel's ground wire prevents a line fault from becoming a shocking experience. By shunting excess line voltage back to the panel's neutral pole, the ground current



How to Ground a Circuit Breaker Box: Essential Steps

Grounding a circuit breaker box is essential to ensure safety and compliance with the National Electrical Code (NEC). To ground your circuit



How to Ground an Electrical Panel Safely and Effectively

Follow a clear step-by-step process: install the ground rod deeply, connect the grounding wire securely, attach it to the panel's ground bus bar, and



How do you ground a plastic electrical box

Here are the steps on how to ground a power distribution box: 1. Preparation: First, you need to prepare some necessary tools, including





LinkedIn

Hier sollte eine Beschreibung angezeigt werden, diese Seite lässt dies jedoch nicht zu.

DISTRIBUTION BOX

Each DISTRIBUTION BOX and controller must be grounded. On the US market, a 5.26 mm² (10 AWG) ground wire must be used, and in all other markets a 6 mm² must be used.



How To Ground A Circuit Breaker Box Safely: A Step-by

Q1: How do I know if my circuit breaker box is grounded? A: Look for a thick bare copper or green wire extending from the grounding bus bar inside



How do I properly ground an electrical circuit?

To properly ground an electrical circuit, install a grounding electrode, connect grounding conductors, and attach circuit ground wires to the grounding bar.



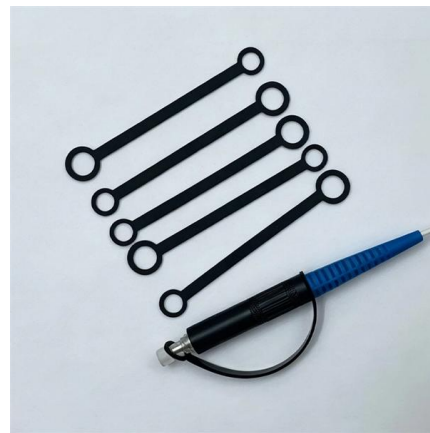


DISTRIBUTION BOX

Attach a ground wire from one of the threaded studs (A) at the bottom of the housing, to the mounting plate (B). Attach a second grounding wire from the mounting plate (B), to the factory

Grounding System Installation Standards for Distribution Boxes and

Whether you're a seasoned pro or just starting out, this comprehensive guide will give you practical insights into proper grounding techniques, with a special focus on how selecting quality materials



electrical

Someone told me that a 240V circuit does not require a neutral wire in the cable. Can anyone explain this phenomenon from the electricity perspective and generally

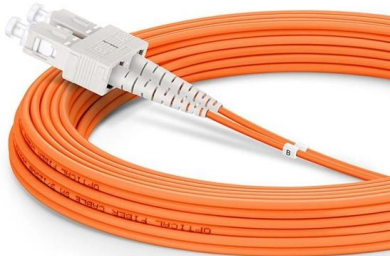
Correct Connection Method Of Grounding Wire Of

Following the above steps and precautions can ensure the correct connection of the distribution box grounding wire, thereby ensuring the safe



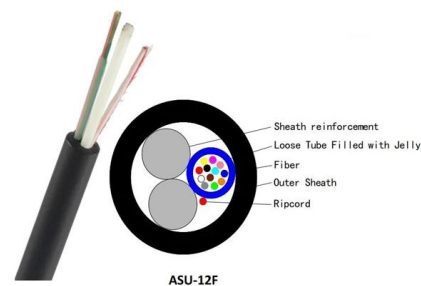
Grounding System Installation Standards for Distribution Boxes and

Hey there! If you're working with electrical systems, you know that grounding isn't just some bureaucratic requirement--it's literally the difference between a safe, functional system and a potential disaster.



Correct Connection Method Of Grounding Wire Of

Generally, copper core wire is selected as the ground wire and connected to the PE wiring bar. When connecting, it is necessary to strip the wire



How to Connect a Ground Wire to a Circuit Breaker

Connecting a ground wire to a circuit breaker is not a difficult job, but you do need to administer care and attention to be entirely safe. Step 1 - Prepare



How To Ground A Metal Box - Essential Steps For DIY Electrical Safety

To safely ground a metal box, connect an equipment grounding conductor (typically a bare or green insulated wire) from the box to the main electrical panel's ground bus bar. Use a green

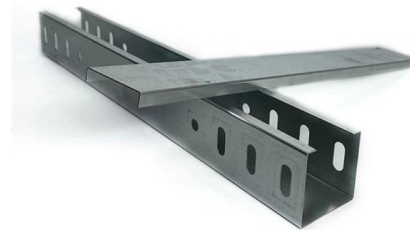


How To Ground An Electrical Panel: 8 Steps With Video

Electrical panel grounding is one of the most important factors regarding electrical safety. While a ground wire is not strictly necessary for

Electrical Box Ground Wire Connectors & Connections

How to make proper & safe electrical ground wiring connections in the box: This article describes options for connecting a metal electrical box to the grounding conductor & connecting the grounding



How to Ground an Electrical Panel: A Complete Guide

Learn how to ground an electrical panel step-by-step. Ensure safety, code compliance, and protect your home from electrical hazards.



Contact Us

For datasheets, pricing, or custom telecom energy solutions, please visit:
<https://koskolong.co.za>