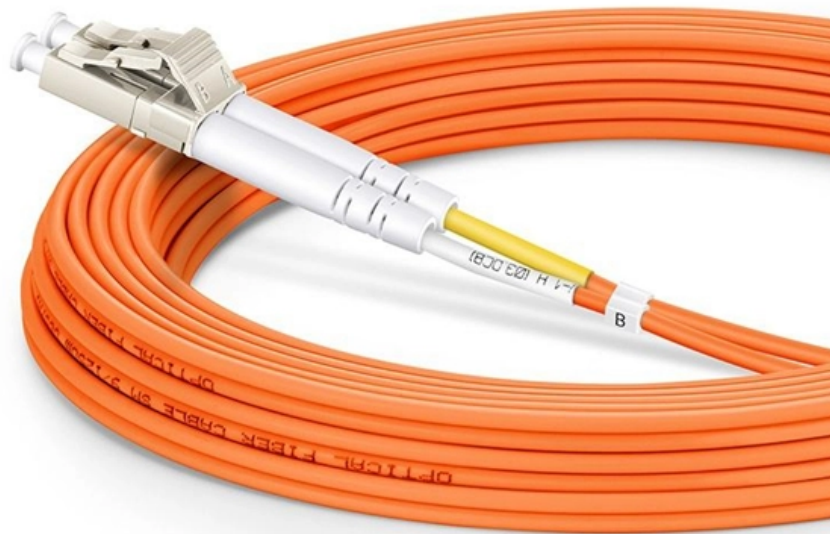




Adam Tas Corridor Energy

How to install cable trays on retaining walls





Overview

Step-by-step on-site guide: learn how to plan, mark, support, and install cable trays correctly, from shop drawing approval to final checks. There is a maximum load capacity per hanger of 318 kg (700 lbs) to 340 kg (750 lbs) with a maximum support spacing of 3. Whether you're building a commercial setup or upgrading an industrial plant, proper cable tray installation ensures neat wiring, safe access, and easy maintenance. en completely installed, without damage either to conductors or structural system use maintain spacing or to keep cables in place when the tray is ect the minimum bend radius for cables as they exit the bottom of the cable tray. 00:00 Cable tray Wall support YPK is used to attach cable ladders to walls from above.



How to install cable trays on retaining walls



Mastering Cable Tray Installation , Step-by-Step Guide for a Seamless

Mastering cable tray installation is crucial for creating a safe, organised, and efficient cable management system. By following this step-by-step guide, you can ensure a seamless setup that

How to install a cable tray to a wall?

The edge of the cable tray is lifted onto the straight tip of the bracket. The other edge of the cable tray is pressed into place from below. See products: <http>



Cable Tray Installation

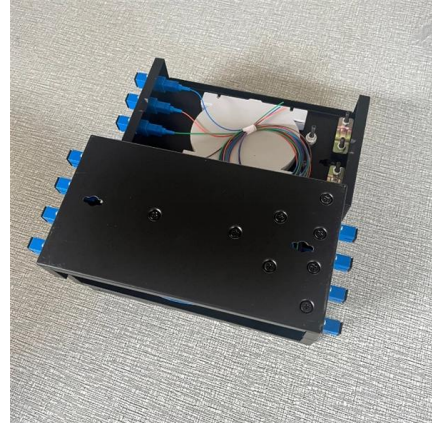
Whether you're building a commercial setup or upgrading an industrial plant, proper cable tray installation ensures neat wiring, safe access, and easy maintenance. But before you lay the first tray

Cable Tray Installation Guidelines , PDF , Galvanization

This document provides details on installing cable trays and their support systems. It includes



diagrams showing how to mount cable trays on walls using pre



How to install Cable Trays - Best Guide in 2026

Step-by-step on-site guide: learn how to plan, mark, support, and install cable trays correctly, from shop drawing approval to final checks.

A Guide to Installing and Supporting Electrical Cable Trays

This guide covers the critical steps, from selecting the right electrical cable tray and performing accurate cable fill calculations to managing a safe cable pull through



How to Install a Cable Railing on a Retaining Wall

Cable railing systems offer a sleek, modern aesthetic and provide unobstructed views, making them a popular choice for perimeter guards on elevated spaces like decks and retaining



Best practice guide to cable ladder and cable tray

Cable ladder and cable tray systems The following recommendations are intended to be a practical guide to ensure the safe and proper installation of



How to install a cable tray to a wall?

When installing, the edge of the cable tray is lifted onto the straight tip of the bracket. The other edge of the cable tray is pressed into place from below. Need more



How to install a cable tray and wire mesh tray to a wall?

Cable trays are attached to wall support YPK with M6x30 screws and M6 nuts. 00:32 Wire mesh tray Joint WMT CL is used to attach wire mesh tray to the wall support YPK.





Cable Tray Technical Guide A practical guide to product selection and

Cable tray length is selected based on the load to be supported, the distance between the supports (also referred to as the span), and handling and installation constraints.

CABLE TRAY SYSTEMS GUIDE

Steel Ladder System Hubbell's NEXTFRAME® Ladder Tray is the effective and widely used cable runway that supports and delivers bundles of cable between cabinets, racks, and closets, along



Cable Tray Installation

Learn everything about cable tray installation with our complete guide. Discover types, steps, and safety tips for efficient electrical cable management.

Cable Tray Technical Guide A practical guide to product selection and

Cable Tray Technical Guide A practical guide to product selection and installation This guide for engineers and installers has been developed by ABB as a practical reference regarding cable tray



Efficient Cable Tray Installation Methods for Organized

Discover efficient methods for installing cable trays to organize power, data, and security cables. Explore wall, ceiling, and floor mounting options

Beama Best Practice Guide , Installation Of The System , Cable

The following recommendations are intended to be a practical guide to ensure the safe and proper installation of cable ladder and cable tray systems and channel support and other support systems.



Length:14.5mm
Small-end inner diameter:2.0mm
Large-end inner diameter:3.5mm
Outer diameter:5.2mm



EzyTray Cable Tray Installation

EzyTray Cable Tray Installation Oct 10, 2013 , EzyTray, Cable Tray, Trapeze , 0 Comments A new EzyTray installation example to show you. In this photo the



How to install a cable tray and wire mesh tray to a wall?

Cable tray: Wall support YPK is used to attach cable ladders to walls from above. Cable trays are attached to wall support YPK with M6x30 screws and M6 nuts.



How To Install Cable Tray On Wall: A Step-By-Step Guide

How To Install Cable Tray On Wall Before knowing how to install cable tray on wall, you must understand its purpose and usage. Cable trays are

Master Cable Tray Installation: A Professional Step-by

Learn how to install cable trays for large-scale projects with our professional, step-by-step guide covering industry standards, safety protocols,



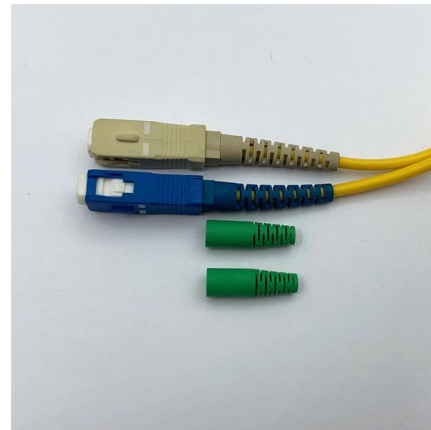
5 Steps to Learn How to Install Cable Trays

Installing a cable tray system requires careful planning to ensure it can support the weight of the cables and adheres to electrical safety codes.



How to Install Separation Wall in Stago Cable Trays , Schneider

This separation wall is used to separate different kinds of cables (or fibre optic). For example, to separate command and power cables.



Best Practice Guide to Cable Ladder and Cable Tray Systems

This publication is intended as a practical guide for the proper and safe* installation of cable ladder systems, cable tray systems, channel support systems and associated supports.

How To: Install Wall Brackets for Cable Trays and Ladders , Step-by

Welcome to our comprehensive guide on installing wall brackets for different types of cable trays and cable ladders! In this video, we will walk you through the installation process for four



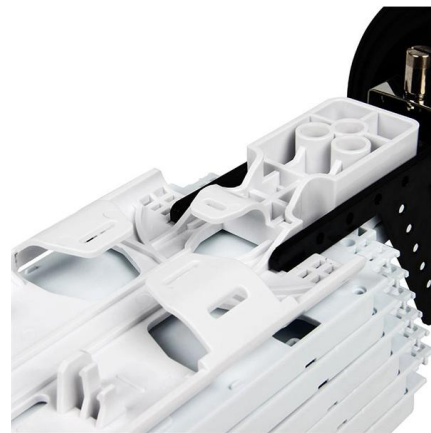


How to install a cable tray and wire mesh tray to a wall?

00:00 Cable tray Wall support YPK is used to attach cable ladders to walls from above. Cable trays are attached to wall support YPK with M6x30

INSTALLATION GUIDE

To ensure that the complete ladder tray wiring system performs as designed, it is important that it is properly installed. Personal injury as well as property damage will result if proper installation and



Contact Us

For datasheets, pricing, or custom telecom energy solutions, please visit:
<https://koskolong.co.za>