



Adam Tas Corridor Energy

How to install polymer cable trays





Overview

Proper planning for installing cable tray includes calculations based on loading, support systems, cable/wire fill and spacing, conductor types, securing of the cables and wire, and proper grounding and bonding are all important aspects of cable tray installation. Once completely installed, without damage either to conductors or structural system use maintain spacing or to keep cables in place when the tray is bent the minimum bend radius for cables as they exit the bottom of the cable tray. Whether you're building a commercial setup or upgrading an industrial plant, proper cable tray installation ensures neat wiring, safe access, and easy maintenance. Cable tray systems are designed for easy installation and to accommodate power, communications, and signal cabling across a variety of applications. NEMA VE2 was developed by the NEMA Cable Tray Section, of which MP Husky is a charter member.



How to install polymer cable trays



Cable Tray Installation

Whether you're building a commercial setup or upgrading an industrial plant, proper cable tray installation ensures neat wiring, safe access, and easy maintenance. But before you lay the first tray

Install GRP Cable Tray In Minutes

Follow the manufacturer's instructions and these helpful steps to install a reliable, low-maintenance GRP containment system that will last for years.



5 Simplified Steps To Install a Cable Tray

By following these steps, you can ensure a safe, stable, and well-organized cable tray installation.



Mastering Cable Tray Installation , Step-by-Step Guide for a Seamless

Learn how to install cable trays correctly. Get the ultimate step-by-step guide on setting up a



seamless and reliable cable management system.



Cable Tray Technical Guide A practical guide to product selection and

Cable tray length is selected based on the load to be supported, the distance between the supports (also referred to as the span), and handling and installation constraints.



DIY Installation: Mastering Light Duty Cable Tray Setup

Explore our comprehensive DIY guide to master the installation of light-duty cable trays. From planning to cable organization, follow step-by-step instructions for a tidy and efficient cable



Cable Tray Installation Procedure Guide

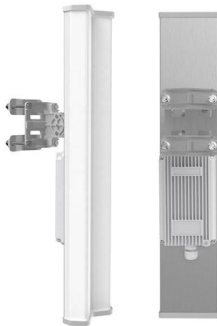
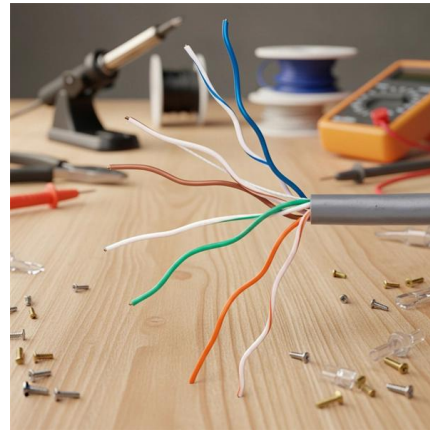
The document outlines the procedure for installing cable trays, including essential tools, equipment, and safety measures. It emphasizes the importance of thorough





How to Install a Wire Mesh Basket or Cable Tray , CMW

Regarding cable management, correctly installing a wire mesh basket tray or cable tray is crucial for safety and efficiency. The short answer is that you need to measure up, choose the right



How to Install a Wire Mesh Basket or Cable Tray , CMW

Learn how to properly install a wire mesh basket tray or cable tray for effective cable management. Tips, tools, and advice from the experts at CMW.

Full guide of cable tray installation and sizing

How to Install Cable Tray: A Comprehensive Guide to Different Cable Tray Types Newlink Cabling Systems - Cable Trays "How to Install Video" US Navy Launched Something That Shouldn't Exist



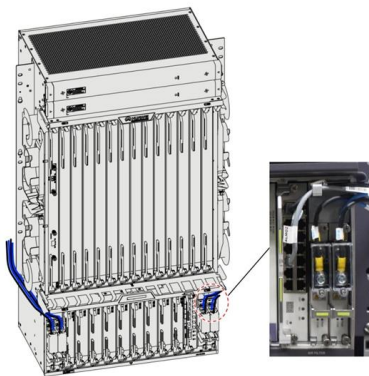
How to install Cable Trays - Best Guide in 2026

Step-by-step on-site guide: learn how to plan, mark, support, and install cable trays correctly, from shop drawing approval to final checks.



How to Install Wire Mesh Cable Trays? , EAE Electric

EAE E-Line TLS Wire Mesh Cable Trays offer high quality and practical use, making your projects efficient. ? Featured Features: Bolted and boltless joining fittings options Snap-on wire mesh



Cable Tray System Explained Animated Installation Guide , FK

This animated video demonstrates how cable tray systems are installed in industrial and commercial projects. Watch the step-by-step process of cable routing, support fixing, and tray alignment.

Cable Mangement Tray Installation

At Apex Tray, we specialize in stainless steel solutions that are durable, high-quality, and designed to meet your needs. From cable trays to custom stainless steel products, we've got you covered.





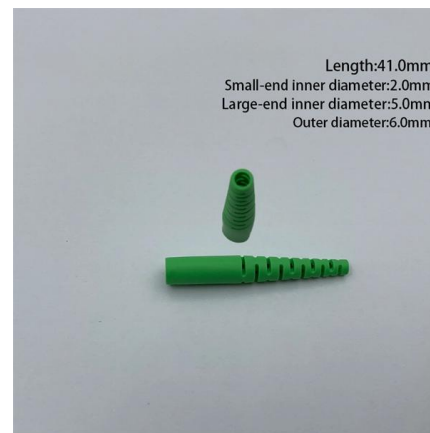
Master Cable Tray Installation: A Professional Step-by

Learn how to install cable trays for large-scale projects with our professional, step-by-step guide covering industry standards, safety protocols,



Cable Tray Technical Guide A practical guide to product selection and

Cable Tray Technical Guide A practical guide to product selection and installation This guide for engineers and installers has been developed by ABB as a practical reference regarding cable tray



Contact Us

For datasheets, pricing, or custom telecom energy solutions, please visit:
<https://koskolong.co.za>