



How to light up a 3V laser diode

Pre-Terminated Patch Panel



Multi-application support



Flexible configuration



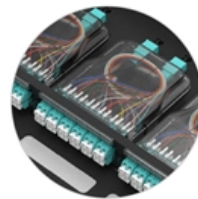
Modular design



Multi-functional Sliding Patch Box, Modular



Modular Sliding Patch Box



Sliding Patch Box, Modular





How to light up a 3V laser diode

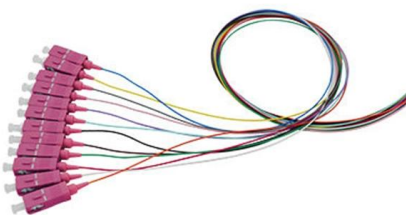


Turn on a laser diode with Arduino

We learn how it works and how to use a laser diode in our electronics and Arduino projects

ADL-63104TW AlGaInP APC Visible Laser Diode 635nm 10mW

By converting the external APC circuit board into an ASIC, we package the APC circuit into a traditional TO-can together with the laser chip. From now on, single package APC function included laser diode



How to Use Laser Diode Module: Examples, Pinouts,

Learn how to use the Laser Diode Module with detailed documentation, including pinouts, usage guides, and example projects. Perfect for students, hobbyists, and

Interfacing laser diode module with Arduino

Learn how to connect and control a laser diode module using Arduino in a few simple steps.



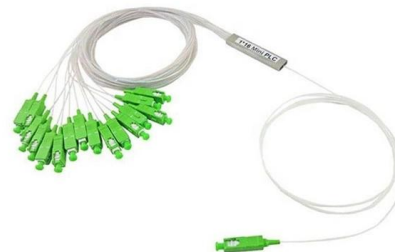
Make a Simple Laser Diode Module

Lastly, LEDs and Laser diodes are a little bit interesting (this time we may assume that LEDs and laser diodes are the same thing). Aside from a forward voltage



Laser Diode Driver Circuit - A Beginners Guide

Introduction to Laser Diodes and Driver Circuits
Laser diodes are specialized semiconductor devices that emit coherent light when an electrical



How to Build a Laser Diode Circuit

In this article, we will show how to connect and build a simple laser diode circuit to get light output from a laser diode.



Laser Diode Driver Circuit - A Beginners Guide - Flex PCB

Introduction to Laser Diodes and Driver Circuits
Laser diodes are a type of semiconductor device that produces coherent light through stimulated



Laser Diode Driver Circuit - A Beginners Guide - Flex PCB

By understanding the key characteristics of laser diodes and the basic components of driver circuits, you can design and build your own laser diode

How to Use LED Filament 3V: Examples, Pinouts, and

The LED Filament 3V is a Light Emitting Diode that mimics the look of traditional incandescent filament bulbs while offering the energy efficiency and longevity of



High-speed Semiconductor Laser Diode Driver with Analog Signal

Semiconductor laser diodes are compact laser light sources with a typical optical power output ranging from several milliwatts up to several watts. Some of their application fields and use cases



8 Best Diode Laser Engravers (May 2026) Complete Buying Guide

Discover the best diode laser engravers with our 2026 guide. We tested 8 models for power, speed, and value to help you choose the right machine.



532nm 12mm Green Laser Diode Module for Stage Lighting Locator

This 532nm green laser head features a 12mm diameter and power options up to 50mw for precise stage lighting positioning and alignment tasks.

Hands-On Tutorial for Laser Diode Integration with Arduino

Step-by-step guide to wiring, coding, and safely integrating a laser diode with Arduino. Includes safety tips, troubleshooting, and beginner-friendly advice.





CO2 vs Diode vs Fiber vs UV Laser: Full Comparison (2026)

A trophy maker who picked up a CO2 unit, then landed a contract for stainless steel dog tags. A gift shop owner who tried engraving inside crystal with a fiber laser and got nothing but

How to Light Up 3V LED with 220V AC Using Diode 1N4007 & 15k

In this video, I'll show you how to light up a 3V LED directly from 220V AC using a simple circuit with a 1N4007 diode and a 15k resistor. This project is for learning purposes and shows how you



CO2 vs Diode vs Fiber vs UV Laser: Full Comparison (2026)

Compare CO2, diode, fiber, and UV laser engravers by material, speed, cost, and business use case. Find which laser type fits your products.



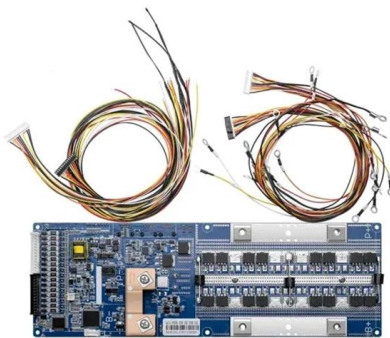
How to control a 3V laser from GPIO

What's the best way to control (turn on and off) a low-power 35mA 3V laser from a Raspberry Pi GPIO pin? The RPi GPIO pins support the right voltage but each can supply only a



How to Build a Laser Diode Circuit

How to Build a Laser Diode Circuit In this project, we will show how to connect up and build a laser diode circuit. A laser diode is a diode which outputs a laser



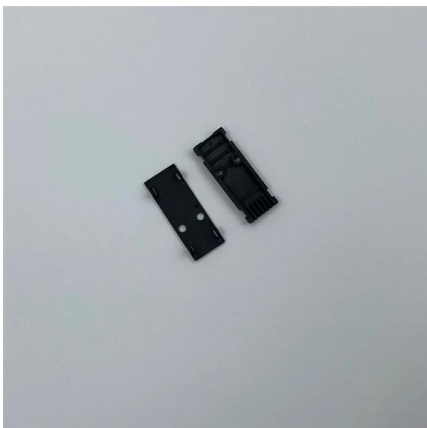
Laser Diode: The Ultimate Beginner's Guide

To turn it on, you just need to connect the correct voltage with plus to



Longer Ray5 10W Diode Laser Lightburn set up & Etch 3d image

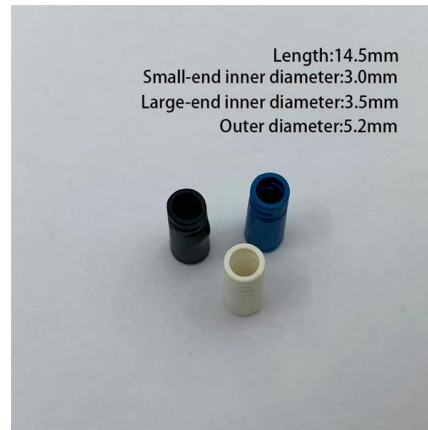
#longer #laser #lightburn Nice easy machine to set up as shown, nice outcome with the engravings Link to purchase Longer RAY5 10W Diode Laser <https://s.zban>





Laser Diode Module Tutorial : 4 Steps

Laser Diode Module Tutorial: Description: This 100mW laser module emits a small intense focused beam of visible red light. The module can be used with an



How to Light Up 3V LED with 220V AC Using Diode 1N4007 & 15k

In this video, I'll show you how to light up a 3V LED directly from 220V AC using a simple circuit with a 1N4007 diode and a 15k resistor.



WeCreat Vision Pro 45W Review: BeamFocus Tech, Auto-Lifting & the

The WeCreat Vision Pro 45W is the most intelligently designed enclosed diode laser for creators and small businesses -- combining BeamFocus 60W-equivalent cutting power, the world's



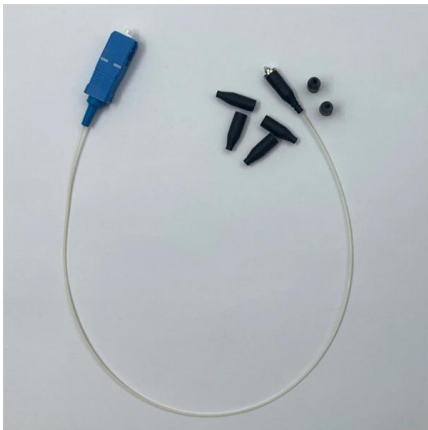
Laser Diode: The Ultimate Beginner's Guide

This is the ultimate beginner's guide to the laser diode. Learn how lasers work and how you can use them in your own projects with this guide.



Turn on a laser diode with Arduino

Laser diodes have a high degree of monochromaticity, with diodes emitting light in various colors, red, green, blue, and violet. In short, red lasers are most suitable



How to Use a 5V Laser Diode with the Raspberry Pi Pico

In this tutorial, you'll learn how to safely control a 5 V laser diode using a Raspberry Pi Pico W. The Pico W uses 3.3 V logic, so you can't power the laser directly--this video shows you

How to Use Laser diode: Examples, Pinouts, and Specs

A laser diode, manufactured by Electronic Spices, is a semiconductor device known for its ability to emit coherent light through a process called stimulated emission. Laser diodes are widely used in various





Contact Us

For datasheets, pricing, or custom telecom energy solutions, please visit:
<https://koskolong.co.za>