



**Adam Tas Corridor Energy**

# How to mount a PoE switch on a wall



✓ IP65/IP55 OUTDOOR CABINET

✓ IP54/55

✓ OUTDOOR ENERGY STORAGE CABINET

✓ OUTDOOR MODULE CABINET





## Overview

---

Before mounting, power off the unmanaged 10/100M 8 port poe+ switch and disconnect all cables. Attach the wall mount brackets securely to the switch following the manufacturer's instructions. Mounting a network switch on a wall can be a practical and space-saving solution, especially in environments where floor space is limited or you want to keep cables neatly organized. Whether you're setting up a home office, a small business network, or upgrading your existing setup, here's a. via a power adapter or a PSE device (such as a PoE switch) which complies with Power Source Class 2 (PS2) or Limited Power Source (LPS) and Electrical Energy Mounting Guide Deco Option 1: Via PoE Switch as remain online (Wi ep-by-step instructions in the Deco form the PoE switch (compliant with. When I used to work with Meraki equipment, they used to have plastic tabs molded into their PoE adapters with screw holes so that they could be quickly mounted against a wall or wooden board by simply driving a pair of self-threading. We recommend mounting the PoE switch between the IP Camera and the Wingfield Box at your court, as you can then cover the distances to the Wingfield Box and the IP Camera with the network cables supplied.



## How to mount a PoE switch on a wall

---



### 5 Easy Steps to Install Your PoE Switch

In this blog post, we'll guide you through the five easy steps to install a PoE switch. Step 1: Choose the Right Location. Before installing your PoE

### How to Power a PoE Display with In-Wall Ethernet

In this article, we'll explain how to use an in-wall Ethernet cable to power and connect a PoE display, with two practical methods to suit different



### PoE Switch , Industrial Ethernet Switch Manufacturer

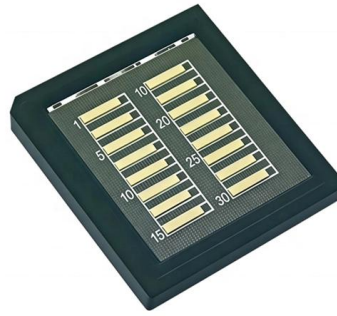
Manufacturer of PoE Switch. CTC's industrial PoE switches provide a wide range of PoE/PoE+ switches with up to 24 Gigabit PoE ports and up to 60W per port

### Installing PoE+ Adapter with Mount

NOTE: Before installation, ensure your Power over Ethernet (PoE) switch capable of PoE+ is active and connected to a functioning Category 5



Ethernet cable.



### Amazon : Wall Mount Poe Switch

8 Port Gigabit PoE Switch with 2 Gigabit Uplink, 120W Built-in Power, 802.3af/at Compliant, Managed PoE+ Switch Support VLAN, QoS, Fanless Metal, Plug and Play (Desktop/Wall Mount) 300+ bought



### What you need to know about mounting the PoE switch

Use the supplied 6mm drill bit to drill the four holes. Insert the supplied dowels into the finished drill holes or use your own, depending on the wall



### PoE Texas 4 Port in-Wall Gigabit PoE Extender Switch

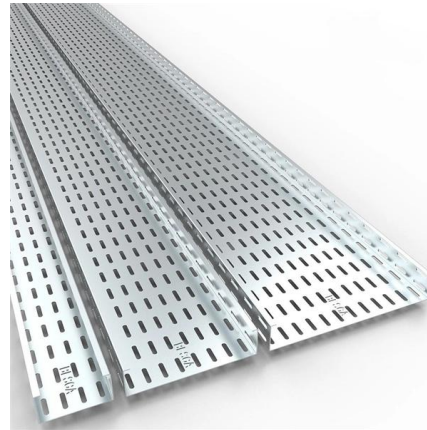
Installation-Ready for Professionals: The purpose-built PoE passthrough switch fits flush in standard gang boxes, eliminating the need for surface mounting. It's





## Power Over Ethernet (PoE) Adapter : 8 Steps (with

Power Over Ethernet (PoE) Adapter: Power over Ethernet or PoE, is the technology used for power transmission in network equipment, via network UTP cable,



## Simplifying Power over Ethernet PoE Installation

PoE switches combine network power sourcing and switching into a single device. Depending on the level of control the user needs over their network, PoE

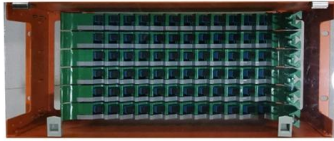
## PoE Switch, 16 Port Managed POE+ Ethernet Switch (16 POE+)

PoE Switch, 16 Port Managed POE+ Ethernet Switch (16 POE+ Ports+2 Gigabit Uplink, 1 x 1.25G SFP), 240W Built-in Power, Support VLAN, QoS, Fanless Metal, Plug & Play (Wall Mount/Rack Mount)



## Power over Ethernet (PoE) Installation Best Practices

Power over Ethernet (PoE) Installation Best Practices Written by Don Schultz, trueCABLE Technical Manager, Fluke Networks Copper/Fiber CCTT,



### **Ethernet PoE switch,Wall mount poe switch,PoE Network Switch**

Attach the wall mount brackets securely to the switch following the manufacturer's instructions. Hold the switch against the wall in your chosen location. Use a pencil to mark the positions of the mounting



### **How To Wall Mount A Network Switch**

Learn how to properly wall mount a network switch for optimized wifi and ethernet connectivity. Follow our step-by-step guide for a seamless

### **NETGEAR 8-Port Gigabit Ethernet Smart Managed Plus Click Switch**

Follow the onscreen instructions to add your switch to a network location. Note: For drywall, use the plastic anchors and fold the wings in before inserting an anchor into a wall. The switch is registered





## How to Install a PoE Wall Jack in Your Home or Office Space



Watch Maria go over how to install a network jack for POE on a wall in our demo space. This is a cost-effective solution for your home or office space.

## 4 Port In-Wall Gigabit PoE Extender with IEEE 802.3bt

Four PoE+ Ports on One Network Cable Run. Power up to four IEEE 802.3af or two 802.3at IP phones, WiFi access points, or other low voltage devices over 600 feet



## Google

Checking your browser before accessing undefined Click here if you are not automatically redirected after 5 seconds. Checking your browser - reCAPTCHA

## Installing PoE+ Converter Mount

Step 4: Installing the mount Installing on a wall 1. Slide the mounting plate on your camera's native mount opposite to the UP arrow to remove. 2. Use the mounting



Product Photography



### How to Power a Wall-Mounted Tablet Using PoE

To implement this in your home or office, you need two main components: a PoE-enabled network switch and a poe tablet pc which can be wall mounted. Here's a

### These little POE++ powered in wall switches have been

These little POE++ powered in wall switches have been amazing! I converted my whole house from Cat5e telephone to ethernet but really wanted more than one



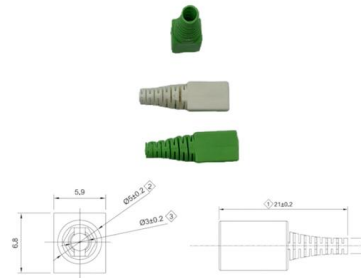
### How to mount a PoE adapter on wall/board : r/Ubiquiti

When I used to work with Meraki equipment, they used to have plastic tabs molded into their PoE adapters with screw holes so that they could be quickly mounted against a wall or wooden board by



## PoE Powered Switch Guide EN

Hardware Installation Place the PoE Powered Switch on the flat, horizontal surface or mount it on the wall. There are two wall-mounted spots at the bottom of the switch.



## How to Install a PoE Wall Jack in Your Home or Office Space

Watch Maria go over how to install a network jack for POE on a wall in our demo space. This is a cost-effective solution for your home or office space. You d

## Deco can be powered via a power adapter or a PSE device (such as

Connect the Ethernet cable to the Ethernet port on the Deco. Orient the Deco LED according to the image, attach the Deco to the mounting bracket, then rotate it clockwise until it locks into place.



## How To Put A Network Switch In The Wall

Learn how to properly install a network switch in a wall for efficient connectivity and organization. Follow these step-by-step instructions for a



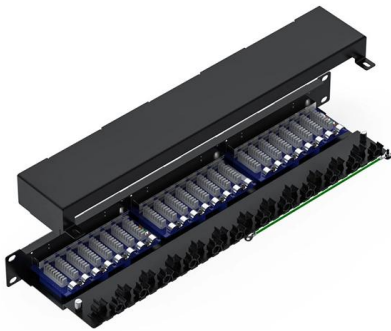
## NETGEAR 8-Port Gigabit Ethernet Unmanaged PoE

Buy NETGEAR 8-Port Gigabit Ethernet Unmanaged PoE Switch (GS108PP) - with 8 x PoE+ @ 123W Upgradeable, Desktop, Wall Mount or Rackmount, and Limited



## Ethernet PoE switch, Wall mount poe switch, PoE Network Switch

Wall mount poe switch can optimize space and improve the efficiency of your network setup. By following these steps, you can ensure a secure and organized installation tailored to your specific



## Contact Us

---

For datasheets, pricing, or custom telecom energy solutions, please visit:  
<https://koskolong.co.za>