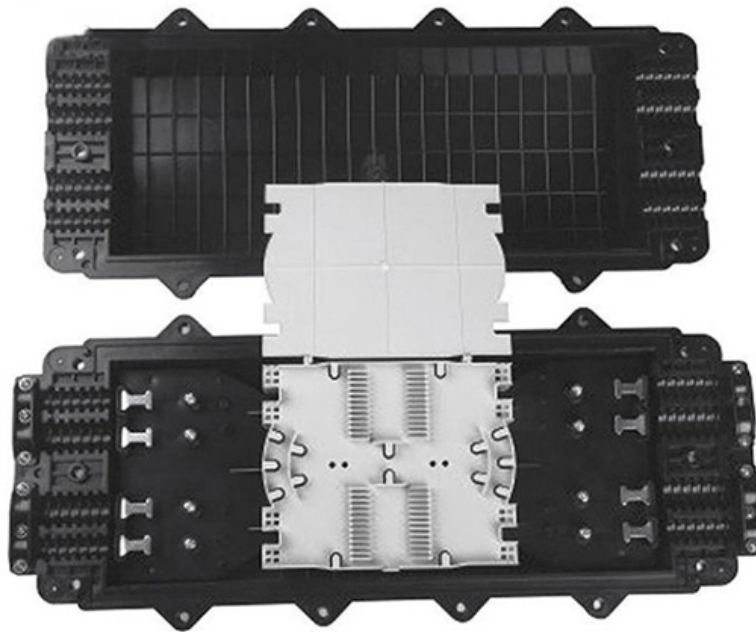




Adam Tas Corridor Energy

How to place the secondary power distribution box on the construction site





Overview

Choose the right box based on environment (indoor/outdoor), load capacity, and durability. Primary distribution systems consist of feeders that deliver power from distribution substations to distribution transformers. It takes the incoming power and safely distributes it to different circuits throughout your building. Let's see what factors need to be taken care of when choosing the installation place. secondary unit substation is a close-coupled assembly consisting of enclosed primary high voltage equipment, three-phase power transformers, and enclosed secondary low-voltage equipment.



How to place the secondary power distribution box on the construct



The Meaning and Function of Primary, Secondary, and Tertiary

Secondary Distribution Box: Used in construction or other project sites, supplying power to specific zones such as buildings or floors. Part of a three-tier protection system, ensuring power safety at

How to Install a Distribution Box--A Comprehensive

Whether you are an electrical contractor or a construction brigade, knowing how to properly and safely install distribution boxes is the basis of



How to Install a Distribution Box--A Comprehensive

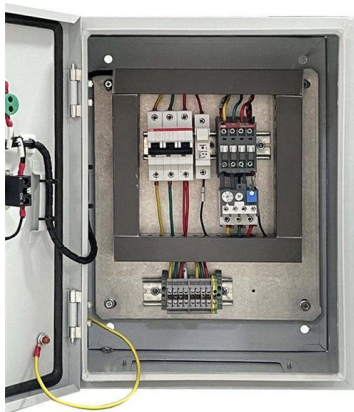
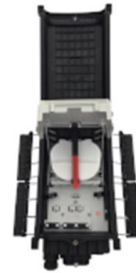
Before starting the installation, finding a proper place for putting the distribution box is crucial, because it largely decides the safety and convenience

Construction Site Power Connection

This includes a connection point (for example via a site connection box), the main distribution with protection and metering devices, sub-



distributions, cables, plug systems, as well as

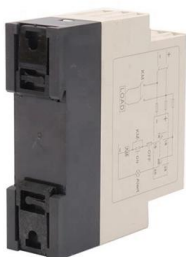


Key Points Of Installation And Collocation Of Distribution Box In

The power distribution system at the construction site shall be distributed in different levels. The main distribution box (or distribution room) shall be set up.

Top Necessities For Proper Construction Site Power

Temporary power distribution is common place on most construction sites, driven by the need to supply convenient portable power access for a wide



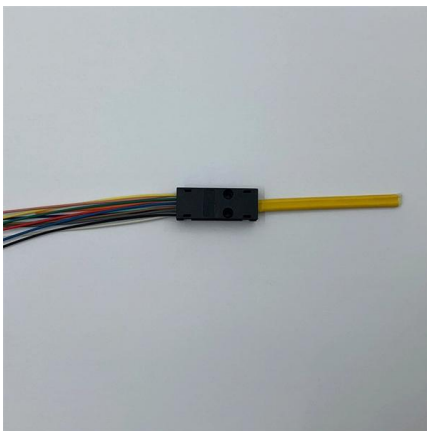
The installation requirements for the distribution box

Learn how to install a distribution box safely and correctly. Covers wiring, placement, standards, and expert tips for a compliant setup.



Power supply on the construction site

Power supply on construction sites is crucial to run all the equipment and tools needed to complete a project. However, distributing power correctly on a construction site can be challenging, especially



Understanding the Electrical Sub Panel: A Clear

Anatomy of an Electrical Sub Panel An electrical sub panel, also known as a sub panel box or breaker box, is an essential component of an electrical system. It

Planning of Electric Power Distribution

Our books on electric power distribution are intended to support you in your work as a planner and to provide you with a continuously updated and dependable instrument. Various volumes under the



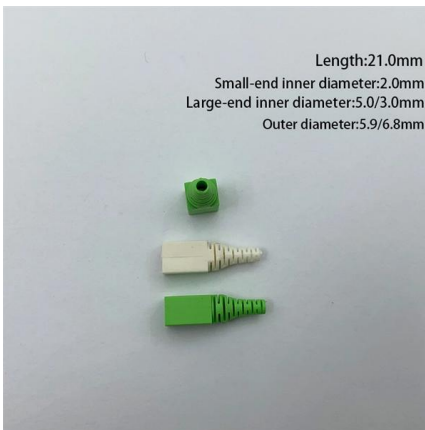
Electric Power Distribution Systems

Summary This chapter provides an overview of electrical distribution network and systems. The primary substation is the load center taking power from the transmission or subtransmission network and



SECTION 9: ELECTRICAL POWER DISTRIBUTION

3 The Electrical Grid Three main components to the electrical grid Generation ESE 450 Transmission Transmission Subtransmission Distribution Primary distribution Secondary distribution Different



Requirements And Specifications For Installation Of

The installation requirements and specifications of Distribution box involve many aspects, including site selection, fixing method, wiring specifications

Site distribution box: "specific location, need specific you"

For the electrical equipment in the distribution board, please install it on the metal or non wood insulation electrical equipment installation board first, and then fasten it





ENERGYBOX Assemblies for Construction Sites (ACS)

ENERGYBOX is a complete range of Assemblies for Construction Sites (ACS) pre-wired boards that can be wall-mounted or installed on a support. The panels are

Power Distribution Boxes Explained Simply

Discover the essentials of a Power Distribution Box--how it works, key types, benefits, and tips to ensure safe, efficient electrical power management.



Power supply on the construction site

A site power distribution board is usually an electrical distribution box equipped with various sockets to provide power for different equipment and machinery. A construction power distribution box may also

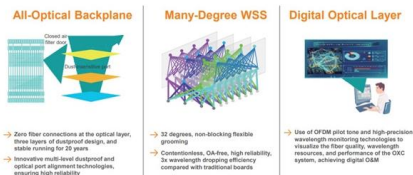
Electric Power Distribution System Basics , Electrical A2Z

The article provides an overview of electric power distribution systems, focusing on one-line diagrams, busways, and grounding. It explains how



Key Points Of Installation And Collocation Of Distribution Box In

The distribution box shall be set below the main distribution box, and the switch box shall be set below the distribution box, and the electrical equipment shall be set below the switch box.



Secondary unit substations design guide

Secondary fault capability is increased by paralleled transformers and the feeder breakers must be selected accordingly. Primary switches are usually selector or duplex type so that



Electric power distribution

A 50 kVA pole-mounted distribution transformer Electric power distribution is the final stage in the delivery of electricity. Electricity is carried from the transmission



Three-Tier Power Distribution System in a Newly Constructed

In a newly constructed residential area, a 10kV power line is introduced into the substation. After stepping down the voltage through the transformer's low-voltage side (0.4kV), power distribution is



Electrical System in Buildings

This article covers the electrical system in buildings (including distribution) at a very basic level. We will discuss the general principles for how

Understanding Distribution Boxes: A Comprehensive Guide

A distribution box, also known as a power distribution box or electrical distribution box, is used to distribute electrical power safely to multiple



Contact Us

For datasheets, pricing, or custom telecom energy solutions, please visit:
<https://koskolong.co.za>