



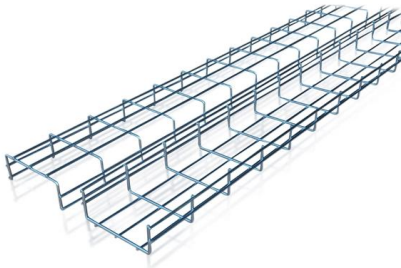
Adam Tas Corridor Energy

How to read the parameters of a 10 Gigabit optical module





How to read the parameters of a 10 Gigabit optical module

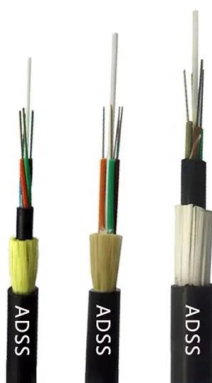


SFP-10G-ER Explained: Powering 40km 10Gbps Optical

This comprehensive guide dives deep into the SFP-10G-ER optical transceiver module. Learn its technical specifications, key applications,

Optical PHY PCB Layout for Gigabit and Faster Ethernet

Optical transceiver modules and their input data lines operate at very high signal bandwidths that create major challenges for high-speed designers in



Optical-Module Parameter Inquiry and Alarm Configuration

Browses all parameters of optical module including the transmitting optical power, the reception optical power, the temperature, the power-supply voltage and the bias current. Note: The transmitting optical

10 Gigabit Ethernet

10 Gigabit Ethernet Router with two dozen 10 Gigabit Ethernet ports and three types of physical-layer module 10 Gigabit Ethernet (10GE, 10GbE, or 10 GigE) is a

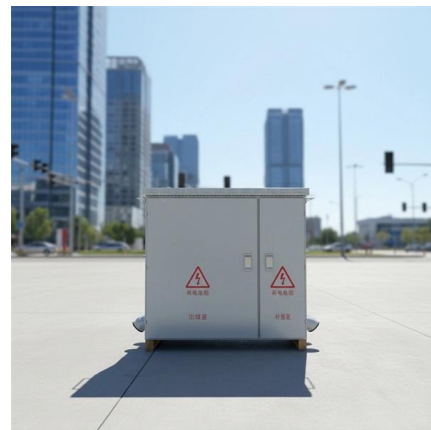


How To Read Optical Module Information On A Network Card In Linux

In addition to independent devices such as switches and routers, optical modules can also work on network adapters (commonly known as network cards). For optical modules used on

What Are the Key Parameters of Optical Modules

Understand the key parameters of optical modules, including transmission rate, distance, wavelength, and fiber compatibility, for better network



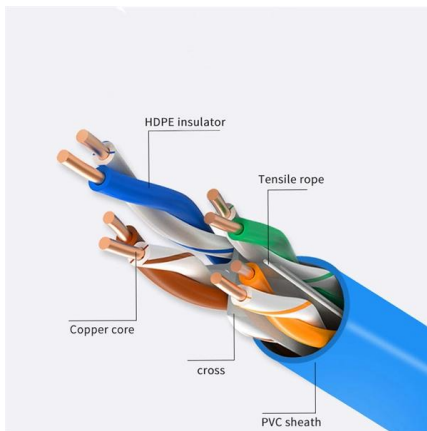
What is SFP Module and How to Choose it?

Ethernet SFP Module: What Is It? Ethernet SFP module, known for its compact, small form-factor pluggable design, also referred to as a mini-GBIC



10 Gigabit Fiber SFP+ Optical Transceiver Module

This gives the user the ability to monitor parameters of the SFP, such as optical output power, optical input power, temperature, laser bias current, and transceiver supply voltage, in real time.



10 Gigabit Ethernet (10GbE) Standards: The Definitive

Q: What is the most popular application of 10 Gigabit Ethernet? A: The most common use for 10 Gigabit Ethernet is Small and Medium Businesses,

PON Module Parameters Guide: How to Choose the

Discover key PON module parameters for selecting the best GPON and EPON modules. Understand their impact on network performance and make



Cisco 10GBASE X2 Modules Data Sheet

Product overview The Cisco ® 10GBASE X2 modules (Figure 1) offer customers a wide variety of 10 Gigabit Ethernet connectivity options for data



Cisco 10 Gigabit Modules

Discover Cisco 10 Gigabit Ethernet Modules, offering high-speed, reliable connectivity to enhance network performance and scalability.

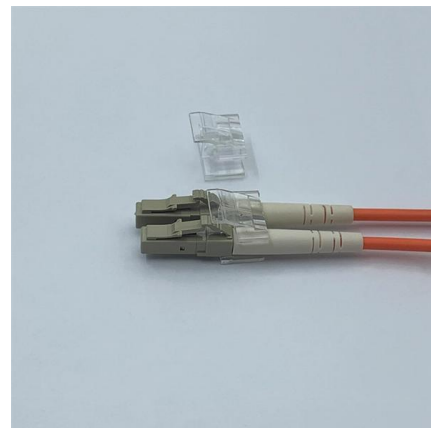


10G Optical Module Overview

This article mainly describes the main application scenarios of 10G optical modules and the main advantages of 10G SFP+ optical modules currently on the market.

Measurements on IEEE 802.3ae 10 Gb/s Ethernet

This prominence is well reflected when discussing measurement issues. 10 Gigabit Ethernet (GbE) introduces several measurements not widely used before, such as optical modulation amplitude





How To View Port Status And Optical Module Information On Cisco

When optical modules operate on a switch, it is usually necessary to read the module's internal information to understand its working status--such as connection status and real-time

Explanation of Optical Module Parameters

Considering that some newcomers to optical modules may not understand the letters on the optical module or the specific meanings of the parameters on the optical module, the following is



Everything You Need to Know About a 10G Fiber Optic

Learn everything you need to know about a 10G fiber optic network card for high-speed Ethernet connections. Find out about Intel chips, SFP+

Optical Fiber and 10 Gigabit Ethernet

Introduction As 10 Gigabit Ethernet (10GbE) is introduced into networks the physical limitations and properties of optical fiber introduce new challenges for a network designer. Due to the increased data





1G SFP vs 10G SFP+: How to Tell the Difference

In real-world deployments, FS offers a full range of 1G SFP modules covering different distances and fiber types. These modules are widely used in

10 Gigabit Ethernet Fiber Design Considerations

The 10 Gigabit Ethernet operating distances provided in the tables below are limited by the channel insertion loss, the cable bandwidth for multimode fiber, and the optical transceiver characteristics



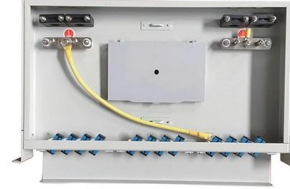
Industrial Gigabit Fiber SFP Optical Transceiver Module,

Also known as a mini-Gigabit Interface Converter (GBIC), this industrial SFP module's metal housing offers increased durability while reducing electromagnetic



How to Understand the Performance Parameters of Optical Modules

The optical module is a core component in optical fiber communication systems, and its performance parameters directly impact the transmission rate, stability, and reliability of the entire



Understanding SFP, Optical Modules, and Gigabit

Discover the features of SFP, optical modules, and gigabit transceivers for fast data transmission and network connectivity.

Contact Us

For datasheets, pricing, or custom telecom energy solutions, please visit:
<https://koskolong.co.za>