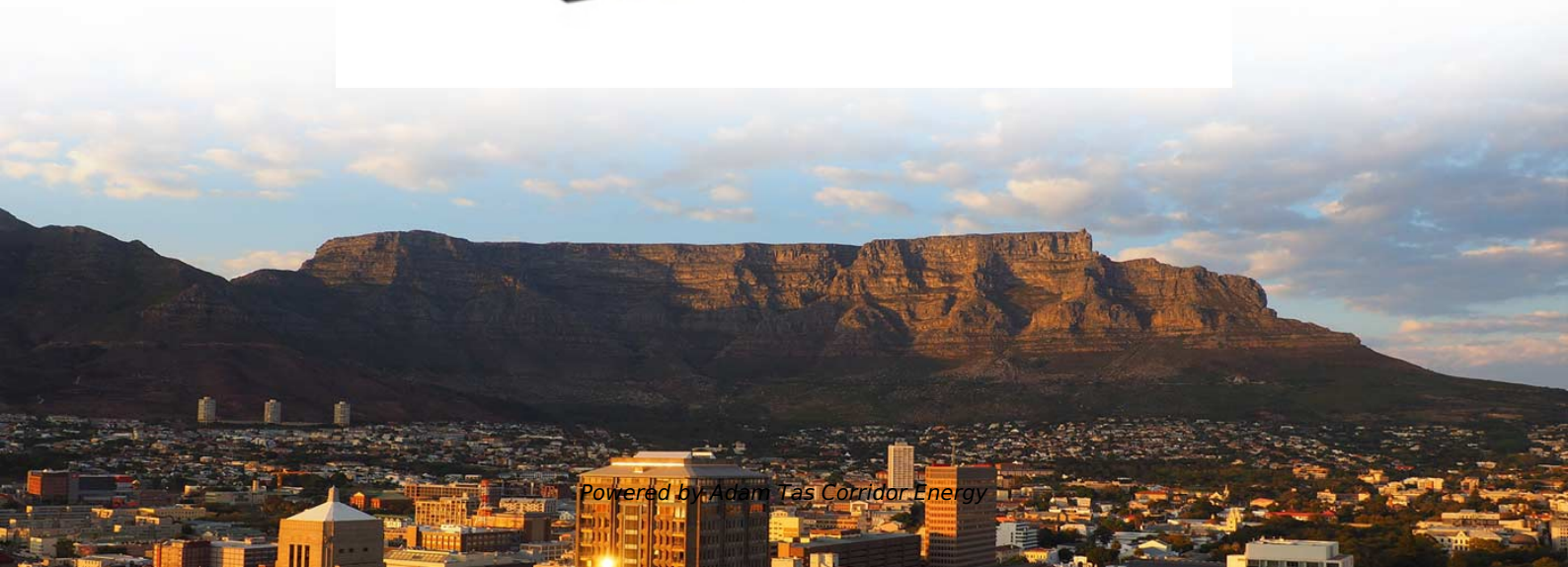




Adam Tas Corridor Energy

How to route electrical wiring and distribution boxes on the roof



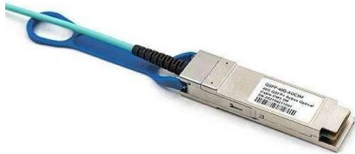


Overview

Routing electrical conduit through a roof requires attention to safety, weatherproofing, and code compliance. "Step-by-Step Roof Electrical Installation Guide" Riaz Electric Skills #wiring Description: About the Video: In this comprehensive guide, we'll take you through the step-by-step process of safely and efficiently installing electrical wiring on your roof. This type of installation is typically necessitated by the placement of equipment like solar arrays, satellite dishes. This guide explains the key code requirements, material choices, installation practices, and inspection steps to keep rooftop conduit installations. All of the connections will start from the 2nd floor and go to some cameras on exterior at the ground level.



How to route electrical wiring and distribution boxes on the roof



passman/js/vendor/zxcvbn/zxcvbn.js .map at master · nextcloud

? Open source password manager with Nextcloud integration - nextcloud/passman

The installation requirements for the distribution box

A distribution box is the heart of any electrical system. It takes the incoming power and safely distributes it to different circuits throughout your



The installation requirements for the distribution box

Learn how to install a distribution box safely and correctly. Covers wiring, placement, standards, and expert tips for a compliant setup.

Proper method to send wiring through the roof?

Because of this I'll either need to bring the wires through the 1st floor roof, or run on top to the



edge (~7ft from the side of house). What is the best way to send the

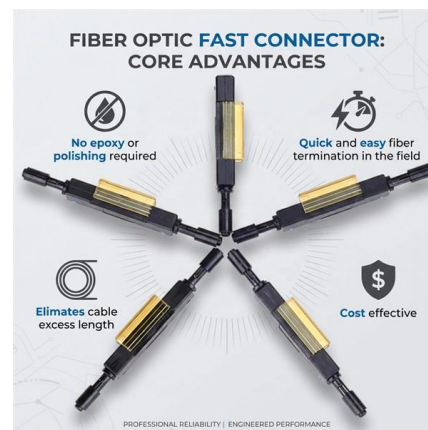


Electrical Conduit on Roof Code: A Practical Compliance Guide

Electrical Conduit on Roof Code: A Practical Compliance Guide October 16, 2025 The rooftop environment presents unique electrical safety challenges. Installing conduit on roofs requires

How to Properly Install Electrical Conduit on a Roof

Ensure safe, compliant electrical routing on roofs. Detailed guidance on material selection, weatherproofing, and protecting the roof structure.



"Step-by-Step Roof Electrical Installation Guide" Riaz Electric Skills

Whether you're a DIY enthusiast or a professional electrician, this tutorial will equip you with the knowledge and skills needed to tackle roof electrical installation projects with



Mastering the Art of Passing Cable Through a Roof: Your

Whether you're a DIY enthusiast or a professional electrician, understanding the art of passing cable through a roof is integral to your wiring projects. So gather your tools, follow the steps

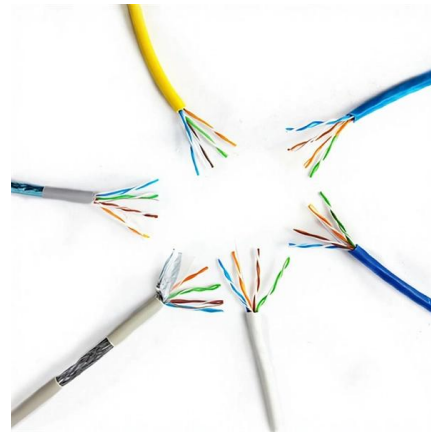


How to Install a Distribution Box--A Comprehensive

Whether you are an electrical contractor or a construction brigade, knowing how to properly and safely install distribution boxes is the basis of

coinkit/coinkit/words.py at master · mflaxman/coinkit · GitHub

Cryptocurrency wallet interfaces for Bitcoin, Litecoin, Namecoin, Peercoin, and Primecoin. - mflaxman/coinkit



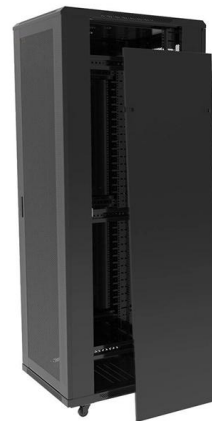
Electrical Conduit on the Roof: Installation, Codes, and Best Practices

Installing electrical conduit on a roof protects wiring from the elements and keeps systems accessible for maintenance. Roof conduits must be weatherproof and properly flashed to



Summary of key points for construction and installation of distribution

The construction and installation points of distribution boxes and switch boxes are summarized as follows: 1. Select qualified products that meet national standards and safety requirements.



A Step-by-Step Guide to Wiring an Electrical Panel Box

Find out how to properly wire an electrical panel box with a comprehensive diagram and step-by-step instructions.



Electrical Conduit on the Roof: Installation, Codes, and Best Practices

This guide explains why roof conduit is used, the common types, how to handle through-roof penetrations, routing and mounting practices, and maintenance tips. It emphasizes safety and





Running Electrical Conduit Through a Roof: Code, Methods, and Best

Routing electrical conduit through a roof requires attention to safety, weatherproofing, and code compliance. This article covers NEC requirements, common conduit types, flashing and

The Complete Guide to Distribution Box: Installation, Types & More

Blog The Complete Guide to Distribution Box: Installation, Types & More By Admin Aug 2, 2025
No Comments # distribution box Introduction
Electrical systems power our homes, offices, and



Electrical Conduit Installation Through Roofs: A Complete Guide for

Running electrical conduit through a roof is a common necessity in residential and commercial construction, allowing safe passage for wiring while protecting it from weather elements.

How to Properly Install Electrical Conduit on a Roof

All junction boxes and fittings used on the roof must be rated for wet locations, typically NEMA 3R or higher, to protect the wiring splices from rain and snow. Seal the interior of the conduit where it





How to Install a Cable Distribution Box Safely and

Understanding Cable Distribution Boxes A cable distribution box is an electrical device used to collect, distribute, and protect electrical power. It is

Electrical Conduit on Roof Code: A Practical Compliance Guide

Installing conduit on roofs requires careful attention to weatherproofing, load considerations, and code compliance to protect people and property. This guide explains the key



"Step-by-Step Roof Electrical Installation Guide" Riaz

Whether you're a DIY enthusiast or a professional electrician, this tutorial will equip you with the knowledge and skills needed to tackle roof

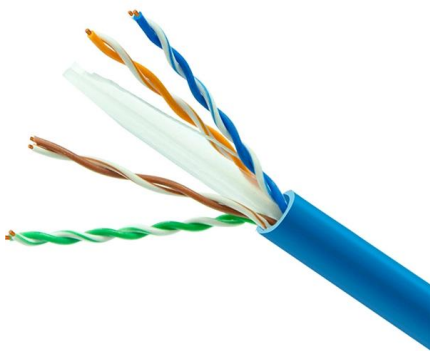
Distribution Box Installation: A Complete Guide to Safe

The distribution box, often referred to as a breaker box, fuse box, or electrical panel, is a critical component of any electrical system. It acts as the central hub for



Proper method to send wiring through the roof?

I might be using a conduit on the 2nd level, and then transition to exposed wires when under the covered deck. Looking for suggestions on how to approach this



Size determination, installation method and wiring mode

The distribution box is the central hub of the home circuit and the general control of our daily power consumption. It is an indispensable electrical equipment. If there



How to Safely Install Electrical Conduit Through a Roof

This article offers a detailed guide on the types of conduit suitable for roof penetrations, installation methods, sealing techniques, and code requirements to help ensure a safe and durable





Discover Europe's digital cultural heritage , Europeana

Hier sollte eine Beschreibung angezeigt werden, diese Seite lässt dies jedoch nicht zu.



Electrical Conduit Installation Through Roofs: Best Practices and

This comprehensive guide covers how to properly install electrical conduit through roofs, highlighting key considerations, tools, and techniques to protect electrical wiring from weather

"Step-by-Step Roof Electrical Installation Guide" Riaz Electric Skills

We provide top-quality electrical products, including junction boxes, conduits, and wiring tools. Visit our website to explore our full range of products.



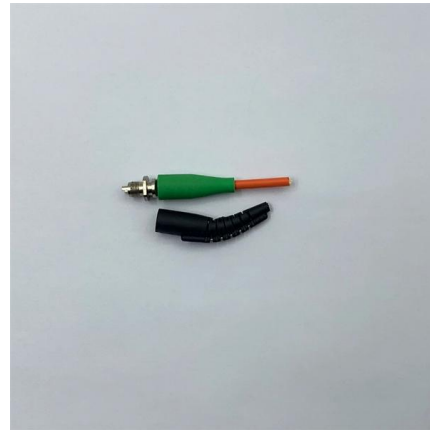
Requirements And Specifications For Installation Of

The metal box of the distribution box, the electrical installation board, and the metal base and casing of the electrical appliances in the box must be



The Essential Guide to Understanding Electrical

5. Consider the layout and physical arrangement: Electrical distribution system diagrams may also include the physical layout of the electrical system, showing



Contact Us

For datasheets, pricing, or custom telecom energy solutions, please visit:
<https://koskolong.co.za>