



Adam Tas Corridor Energy

How to set an optical power meter to not turn it off



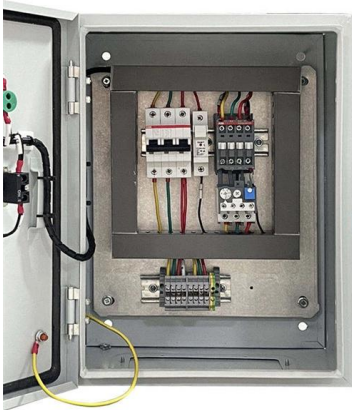


Overview

If you want to disable this auto shut-off function and keep this instrument working, please press and hold the "MODE" button immediately when power on for about 2 seconds until "PERM" appears on the bottom right screen of the LCD, meaning that the power saving function has been. Select POWER, Source, then: ■ To set reference, push Abs/Rel and hold Set Ref for 3 seconds (3 buzzer sounds). ■ INTRODUCTION AND APPLICATIONS N3970A OPTICAL POWER METER Congratulations on your. A general description is followed by explanations of how to operate the unit remotely via the serial RS232 connection. Short press the power button to turn on machine, and automatically start the auto-off function, the default auto-off time is 10 minutes. There are four possibilities the indicator may show, full, with 2 blacks, with 1 black and empty. If an empty battery indicator mean the power is almost out please replace it with a new one.



How to set an optical power meter to not turn it off



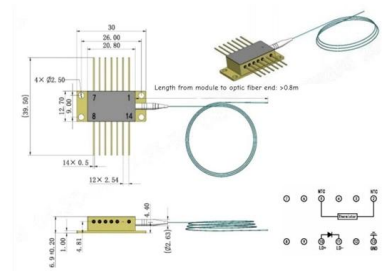
Thorlabs, Inc.

Hier sollte eine Beschreibung angezeigt werden, diese Seite lässt dies jedoch nicht zu.

N3970A OPTICAL POWER METER

Transfer the same power level to the meter to be calibrated, set MAX/MIN to display power, then +/- to adjust the reading to match the noted reference reading. Note: The optical power is measured only

Outline drawings
mm



FPM/FLS 101 Fiber Optic Test Meter Setup Guide

With the power meter on, press and hold to disable or enable the auto off feature. Press and release to manually cycle through the calibrated wavelengths in the following order: 850 nm > 1300 nm > 1310

How-To , Latest News, Photos & Videos , WIRED

Find the latest How To news from WIRED. See related science and technology articles, photos,



slideshows and videos.



THORLABS PM100 OPERATION MANUAL Pdf

o Install the NiMH battery pack; therefore turn the unit, set the battery pack in its socket and push it slightly in top direction of the meter, until it snaps in.

Top Content on LinkedIn

Explore top LinkedIn content from members on a range of professional topics.



Optical Power Meter User Guide

Disable Auto Off tons are pressed for minutes. To bypass this feature, hold the Power button or 3 seconds when powering on. A series of beeps will indicate that the units Auto



How to Use an Optical Power Meter(OPM): A Beginner's

An optical power meter is a professional testing device used to measure the power of optical signals accurately. It is widely used in fiber optic



SUN-OPM200 Power Meter User Manual , PDF , Optical

This user manual provides instructions for using the SUN-OPM200 Series fiber optic power meter. The power meter has several key features, including automatic



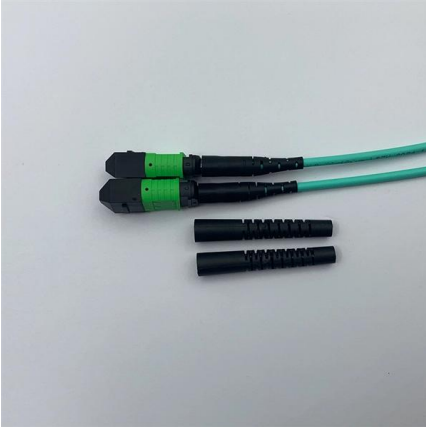
User's AQ2180 Manual Optical Power Meter User's Ma

The AQ2180 series are full featured palm sized and lightweight optical power meters designed for use with an optical Light source to perform optical loss measurements on optical fiber cables.



How to Use a Multimeter (with Pictures)

Set the multimeter to Ohms or Resistance. Turn the meter on if it has a separate power switch. When multimeter measures resistance in ohms, it can



Beginner's Guide to Power Meter Usage for Optical

Use a power meter for fiber optic testing by cleaning connectors, setting wavelength, calibrating, and following step-by-step procedures for



V30 User Manual V0.06

If you want to disable this auto shut-off function and keep this instrument working, please press and hold the "MODE" button immediately when power on for about 2 seconds until "PERM" appears on the

Google

Checking your browser before accessing undefined Click here if you are not automatically redirected after 5 seconds. Checking your browser - reCAPTCHA



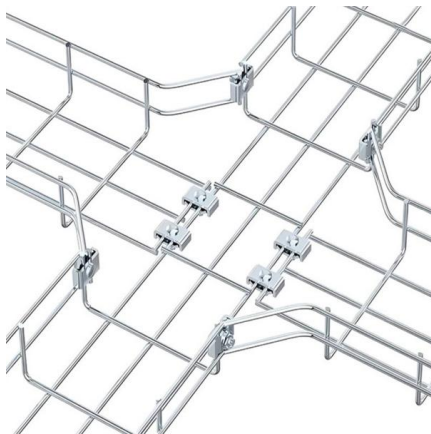
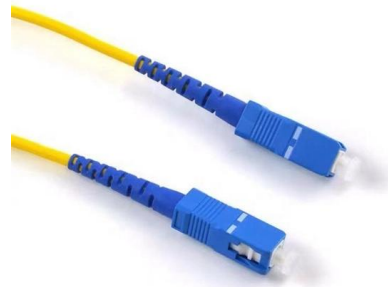


[unsupervised_topic_modeling/topics/en/15/50/100/topics](#) at

Contribute to [annontopicmodel/unsupervised_topic_modeling](#) development by creating an account on GitHub.

Optical Power Meter User Guide

Introduction The RP460 Optical Power Meter is an ultra low cost, and compact power meter used for verifying both absolute and relative power across any given fiber. This document will serve as an



FX41xT PON Optical Power Meter User Manual

Deactivate the laser before connecting or disconnecting optical cables or patchcords. Never look directly into an optical patchcord or an optical interface (e.g., CFP, CFP2, CFP4, QSFP+, SFP+, SFP,

[directory-list-2.4.txt/directory-list-2.4.txt](#) at main

[Customer stories](#) [Events & webinars](#) [Ebooks & reports](#) [Business insights](#) [GitHub](#) [Skills](#)



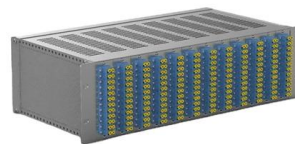
How can I set up for a color to be selected in a cell when I type

I am trying too automatically fill a color in a cell when I type a certain word in it.



5 Tips for Accurate Optical Power Meter Readings

Make sure that your power meter is compatible with the wavelength of the signal you are measuring. By following these tips, you can ensure that your optical power meter readings are as



Optical Power Meter User Manual

Enter the optical power meter interface after booting, short press the "REF" key to set the current power value as the reference power, which can realize relative optical power test (insertion loss test) or





Agilent Technologies N3970A : Optical Power Meter Model

N3970A OPTICAL POWER METER SOURCE QUICK REFERENCE GUIDE To remove interchangeable connector, move interface to mid position, and pull off adaptor. To defeat auto power



Optical Power Meter Basics

At power up, the power meter downloads information about the detector from the calibration module or the detector internal memory. Based on the calibration module preprogrammed data, the meter

Operation, Maintenance & Calibration of Optical Power Meters

Learn how to operate, maintain, and calibrate GAO Tek's Optical Power Meters with detailed guidelines for accurate fiber optic measurements.



Multichannel Optical Power Meter Instruction Manual

lectronics can affect the overall system linearity. The power meter linearity is characterized and specified to know the measurement accuracy and linearity over the full dynamic range. For accurate insertion



How to use optical power meter?

Optical power meters are specific instruments used to measure the strength of light signals in fiber optic networks. Signaling devices are essential since they give us an indication of the



VIAMI Solutions , Network Test, Monitoring, and Assurance

Our test, monitoring, assurance, and resilient position, navigation and timing solutions enable and secure critical infrastructure ranging from data center

Optical Power Meters: Understand Their Uses and

Optical power meters are indispensable instruments for testing and maintaining modern fiber optic communication and other systems. Learn all about





Contact Us

For datasheets, pricing, or custom telecom energy solutions, please visit:
<https://koskolong.co.za>