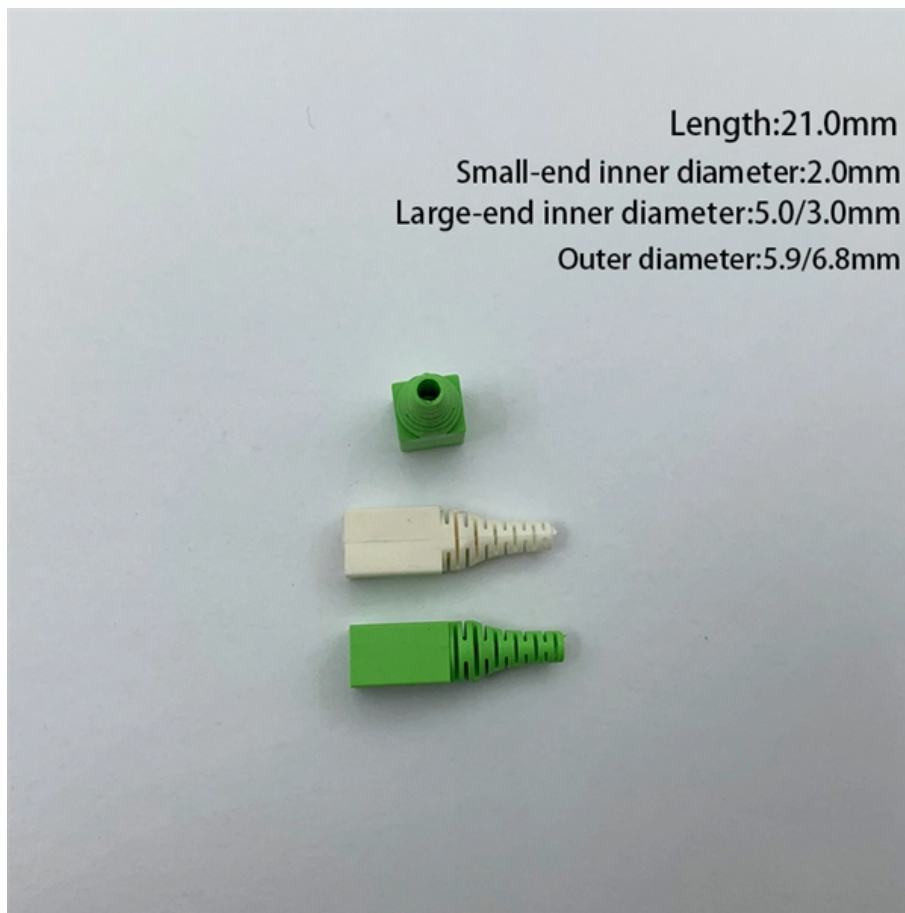




# **How to test for open circuits in a distribution box**





## Overview

---

Begin by using a multimeter to check the voltage at the open circuits and then use a continuity tester to check for breaks in the wire. This comprehensive guide will equip you with the knowledge and practical steps needed to confidently use a multimeter to detect these critical electrical failures. A continuity tester is the simplest tool for the specific task of checking for continuity.



## How to test for open circuits in a distribution box

---



### How To Test For An Open Circuit In A Home

Although you can close and open a circuit at will using a switch, some open circuits may be caused by other reasons such as wire cut in the circuit or an

### How to test a three-phase distribution box by using a

The testing of the distribution box must be done by experienced personnel otherwise it could create a lot of problems certain circuit components in



### Find Where the Hot or Neutral Is Open

Diagnostic Tree: Broken Circuit (Open) Finding Your Open Hot or Open Neutral If you have reached this page without beginning at the Start of the diagnostic tree, you may do better to start there. Since an



### Detecting an Open Circuit: Tools and Things to Consider

Learn how to detect an open circuit and all the things to consider to deal with it



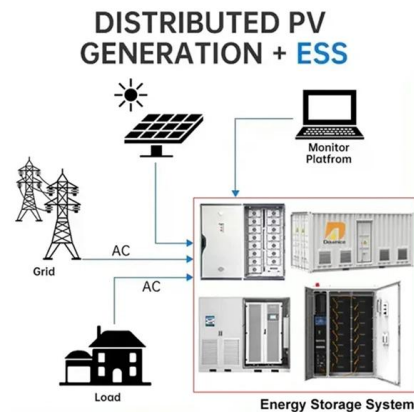
### 3 Ways to Test a Circuit

Whether you want to test a simple circuit you've made for a school project or a wall outlet in your home, there are several testing tools you can use



### How To Test Open Circuit

Begin by using a multimeter to check the voltage at the open circuits and then use a continuity tester to check for breaks in the wire. If the multimeter reads below 12 volts then the circuit



### How To Test For Open Circuit With Multimeter?

Knowing how to diagnose an open circuit accurately and efficiently is paramount. This comprehensive guide will equip you with the knowledge and practical steps needed to confidently





## How To Check Open Circuit

how to check open circuit As any electrical engineer knows, open circuit testing is a critical part of being able to assess and diagnose the



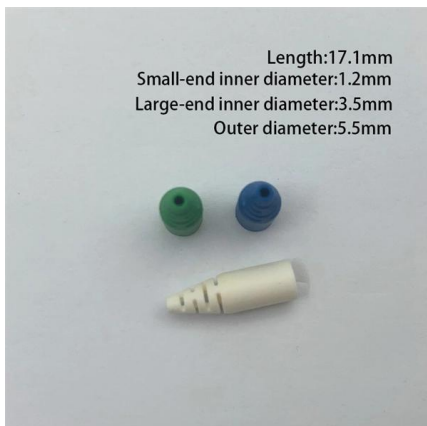
## Test open circuit using multimeter (Verification, 2026)

In this article, we'll delve into the unique aspects of verifying open circuit using multimeter, covering the process, tools required, and practical tips.



## SAFEHOUSE GUIDE TO DISTRIBUTION BOARDS,

SAFEHOUSE GUIDE TO DISTRIBUTION BOARDS, ISOLATORS AND EARTH LEAKAGE UNITS The distribution board in any building contains



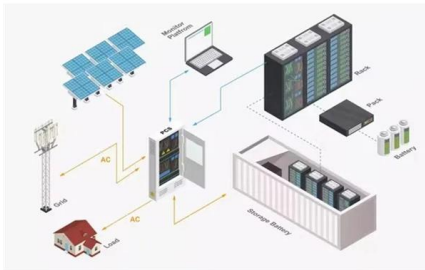
## House Wiring Open Circuit Test - Wiring Flow Schema

Performing a regular open circuit test on your house wiring is a simple and cost-effective way to protect your family from potential hazards. The first step in a



## How To Test Open Circuit

Testing an open circuit isn't difficult, but it's essential that you take the right steps to ensure that everything is safe and secure. By following these simple



## Distribution Box Installation: A Complete Guide to Safe

The distribution box, often referred to as a breaker box, fuse box, or electrical panel, is a critical component of any electrical system. It acts as the central hub for

## How To Test For Open Circuit With Multimeter?

If there's no continuity, the circuit is open. Additional Considerations for Different Circuit Types Different circuit types may require specific testing approaches. For example, testing a circuit



## Detecting an Open Circuit: Tools and Things to Consider

Detecting an open circuit is the key to solving these mysterious breakdowns. Imagine: your kitchen lamp stays off Behind these cases, a cut



## How to Test for Electrical Issues in a Disconnect Box (Safety Guide)

Learn how to safely test for electrical issues in a disconnect box using a multimeter. Identify faulty fuses and voltage drops today. Read our expert guide!



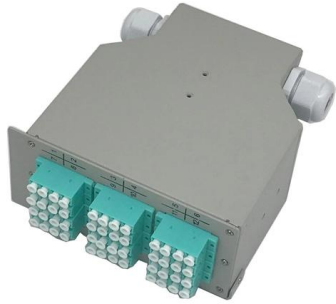
## How To Check Open Circuit

In this article, we'll explain the steps you need to take to safely and accurately test for an open circuit. To begin your open circuit testing, you'll first

## How to Inspect a Residential Electrical Distribution Panel

How to Inspect Electrical Panels, list of defects, safety hazards, safety for the inspector. Electrical panel inspection procedures: How to inspect electrical panels - the main panel Inspecting the electrical



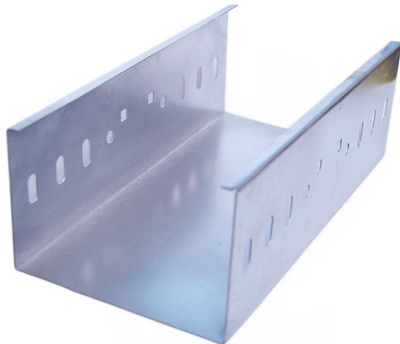


## How To Test For Open Neutral With Multimeter? A Step-by-Step Guide

An open neutral condition is a serious electrical fault that can have devastating consequences. It occurs when the neutral wire, designed to carry the return current back to the

## How to diagnose the fault of low voltage distribution box

You can diagnose faults in a low voltage distribution box by following clear steps. Start with identifying the fault range, gather evidence, and combine information for accurate results.



## How to Tell if a Fuse is Blown in a Distribution Box

Learn how to identify a blown fuse in your distribution box. Find signs, test methods, and replacement tips for safe and effective troubleshooting.

## How to Check for an Open or Loose Neutral

How do I Check for an Open Neutral? You may have heard that checking for voltage on neutral with respect to ground is a good way to test for a



### **electrical distribution box preventive maintenance check list**

2. Internal Inspection Open the distribution box and check for dust and debris accumulation. Inspect circuit breakers for proper operation. Ensure all connections are tight and secure. Look for any signs



### **How To Test Open Circuit With Multimeter?**

Testing for open circuits with a multimeter is a vital skill for anyone dealing with electrical systems. This guide has provided a comprehensive overview of the process, from understanding the basics of open



### **How To Test A Breaker Box With A Multimeter? Troubleshooting Guide**

The electrical breaker box, also known as a distribution panel or load center, is the heart of your home's electrical system. It's the central point where electricity enters your house and is





## Power Distribution Box

Troubleshooting Circuit breaker trips Check the electrical load and ensure that the sensors do not exceed the 10 Amp maximum. Check each wire for damage that may lead to a short. Replace any



## Mi Distribution Boards Routine Test Protocol

Content of routine test Degree of protection of cabinets /enclosures (sealings, protection covers) Creepage and clearance distances Protection against electric shock and integrity of protective circuits

## Contact Us

---

For datasheets, pricing, or custom telecom energy solutions, please visit:  
<https://koskolong.co.za>