



Adam Tas Corridor Energy

How to test the configuration of a power distribution box





Overview

Items of importance for electrical distribution testing include Arc Flash Analysis, Load Flow, Short Circuit Study, Harmonics, and Coordination Studies. Once these items are complete in house testing can be incorporated as a second phase of preventative maintenance. Use a volt meter to measure voltage at the power supply and at the power distribution box. [New Video Alert!](#) [Are you ready to master Power Distribution Board Inspections?](#)

[Whether you're in the field or just learning, this video on my YouTube channel Phani EHS Info breaks down essential steps for a thorough inspection! From safety tips to crucial checks, you'll gain all the. Understanding how to safely and effectively test a breaker box with a multimeter is a crucial skill for any homeowner or electrician.](#)



How to test the configuration of a power distribution box

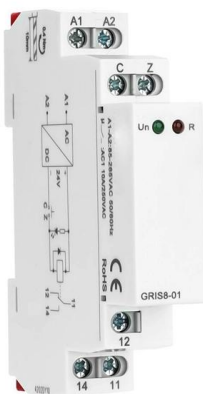


How To Check Power Distributor? Sxpowercase

Discover how to inspect your power distributor for performance and safety with my step-by-step guide on performing checks effectively.

How to Use a Power Distribution Box? Sxpowercase

Learn how to safely use a power distribution box with our step-by-step guide. Ensure reliable performance and prevent electrical hazards.



Power Distribution Unit (PDU) Applications, Testing

This guide covers the basics of pdu construction, applications, testing and maintenance procedures. Photo: TestGuy. A power distribution unit (PDU) is

How to test a three-phase distribution box by using a

How to test a three-phase distribution box by using a megger? The distribution box testing is



very important and before doing this test we need to



Power Distribution Box

Testing and Commissioning Perform a visual inspection of all connections and components. Test the functionality of the distribution box and circuit breakers. Verify that all indicators and meters are

Explore Power Distribution Box Types and Functions

Power distribution boxes are used in commercial and residential buildings and are part of the electrical system, also known as switchboards.



Distribution Box and Selection Guide

Different settings have distinct electrical requirements: Residential: Homes typically require single-phase power and a Distribution Box with fewer



How to Inspect a Power Distribution Board

From safety tips to crucial checks, you'll gain all the insights needed for a safe and effective assessment. Watch now: [How to Inspect a Power Distribution Board](#) Perfect



What is a Distribution Box? - A Comprehensive Guide

A distribution box organizes and controls power flow, ensuring safety and efficiency in electrical systems.

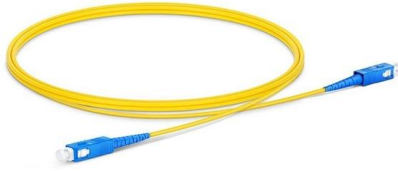
Circuit Breaker: What it is And How it Works , Electrical4U

What is a Circuit Breaker? A circuit breaker is defined as a switching device that can be operated manually or automatically for controlling and



Power Distribution , Using the Power Distribution Box

To prevent damage to equipment, check your work before turning the breaker switch ON. Each configuration of the power distribution box is suited for a specific case.

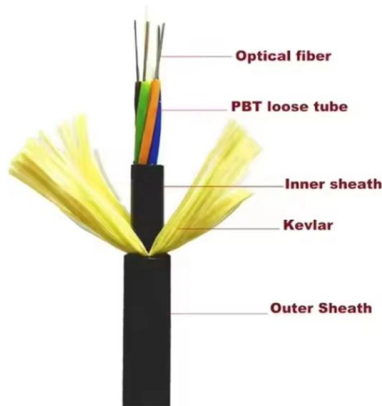


How To Read The Distribution Box System Diagram

?Check electrical parameters?: First understand the basic electrical parameters of Distribution box so that you can have a general understanding of



Cable structure

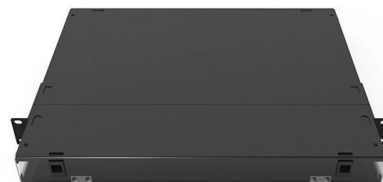


FieldComm Group

Based on the OPC UA information model, PA-DIM standardizes how device data is structured and shared, making it easily accessible for analytics,

How To Test A Breaker Box With A Multimeter? Troubleshooting Guide

A step-by-step guide to testing a breaker box with a multimeter was provided, covering voltage testing, continuity testing, and current measurement. Each test was explained in detail, with





Electrical Testing and Commissioning Handbook , EEP

This handbook offers instructions for testing electrical systems according to National grid standards. Presumably, the extensive and thorough

A Step-by-Step Guide to Wiring an Electrical Panel Box

A Step-by-Step Guide to Wiring an Electrical Panel Box An electrical panel box, also known as a breaker box or a distribution board, is a crucial component of any

LoRawan outdoor base station



What Testing Should I Do to my Electrical Distribution Equipment?

Items of importance for electrical distribution testing include Arc Flash Analysis, Load Flow, Short Circuit Study, Harmonics, and Coordination Studies. Once these items are complete in house testing can be

Distribution Panel Board Testing & Commissioning

This post is supposed to provide distribution panel testing and execute commissioning while the inspection checklist is being completed.





Truck Trend

Truck Trend features news and reviews of the latest trucks and SUVs from Ford, RAM, Chevy, GMC, Toyota and more, plus diesel trucks, classic

A Step-by-Step Guide to Wiring an Electrical Panel Box

Find out how to properly wire an electrical panel box with a comprehensive diagram and step-by-step instructions.



Power Distribution Box

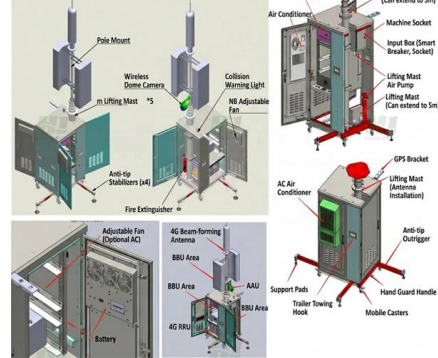
Use a volt meter to measure voltage at the power supply and at the power distribution box. Be sure that the power distribution box has sufficient power provided to it. Long cable runs can result in a voltage

How to Install a Distribution Box--A Comprehensive

An electrical distribution box, also known as a power distribution box, panelboard, or consumer unit, is the core of an electrical system. It has three



Product Composition Description



What is the Function of a Distribution Box in Electrical Systems

Understand the function of the distribution box in electrical systems and how it ensures safe and efficient power distribution.

Understanding Distribution Boxes: A Comprehensive Guide

A distribution box, also known as a power distribution box or electrical distribution box, is used to distribute electrical power safely to multiple



Power Distribution Box

Check the tightness of electrical connections along the power supply cable. Tighten any loose connections. Use a volt meter to measure voltage at the power supply and at the power distribution





How to Install a Cable Distribution Box Safely and

In modern electrical systems, cable distribution boxes (also known as electrical distribution boxes or distribution boxes) play a crucial role as the key



The Complete Guide to Distribution Box: Installation, Types & More

Blog The Complete Guide to Distribution Box: Installation, Types & More By Admin Aug 2, 2025
No Comments # distribution box Introduction
Electrical systems power our homes, offices, and

Contact Us

For datasheets, pricing, or custom telecom energy solutions, please visit:
<https://koskolong.co.za>