



Adam Tas Corridor Energy

How to understand a PoE switch





Overview

A PoE switch is a network switch that provides both power and data transmission over a single Ethernet cable to connected devices. This allows network devices like IP cameras, wireless access points, and VoIP phones to receive power without needing separate electrical wiring. Instead of needing separate power plugs for devices like cameras or sensors, a PoE switch powers them up while connecting them to the.



How to understand a PoE switch

A Comprehensive guide to PoE Switches and their Uses



A PoE (Power over Ethernet) switch is a network switch that delivers both power and data through a single Ethernet cable to connected devices such as IP cameras,

Creating Virtual Networks (VLANs) - Ubiquiti Help Center

Virtual Networks (VLANs) segment networks to improve performance, security, and traffic management. They help isolate devices and users, reducing the risk of



What Is A PoE Switch And How Does It Work

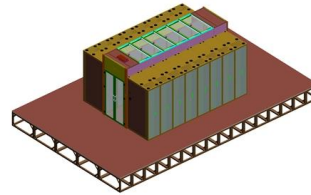
Discover how PoE switches work--power and data over one cable, evolving from IEEE 802.3af to 802.3bt for efficient, scalable network setups.

What Is PoE Switch? How Does It Work?

What Is A PoE Switch? A PoE switch is a network switch that provides both power and data



transmission over a single Ethernet cable to connected devices. This

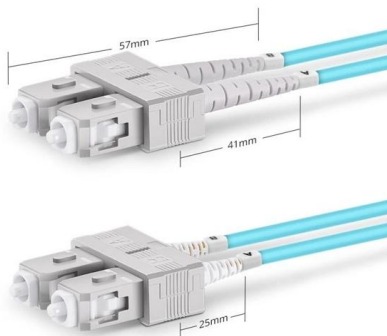


POE Switch 2 Port: Price & Options In India -- Explained

In conclusion, finding the right 2-port PoE switch price in India involves balancing cost with necessary features. By understanding your specific power needs, considering reputable brands, and

Everything you need to know about the PoE Switch

A PoE switch is a type of network switch that supports PoE technology. When network equipment is connected to a PoE switch, the switch checks whether



Duplex SC UPC

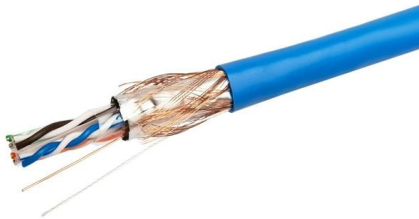
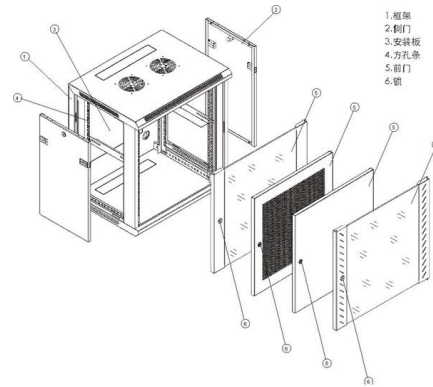
What is a PoE switch (Power over Ethernet switch)?

A PoE switch provides power and network connectivity over Ethernet cables to access points, security cameras, and other Internet of Things devices



Understanding Data Center Switches: The Backbone of Modern

These switches are specialized devices designed to manage the flow of data between various devices within the data center, ensuring that information is transmitted quickly and reliably.

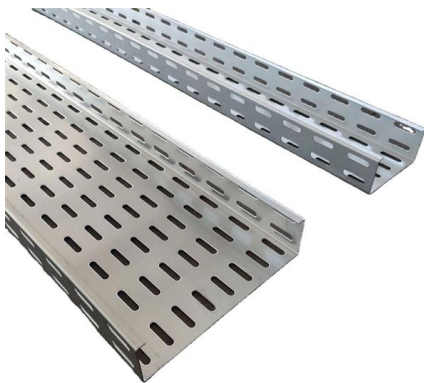
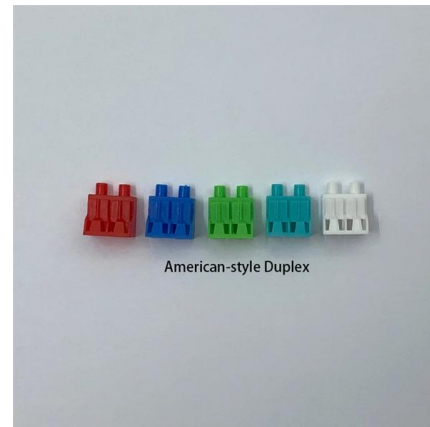


What is a PoE Switch

A Power over Ethernet switch is a network switch that has PoE functionality integrated. Learn about different variations, limitations and benefits of

What Is Power Over Ethernet (PoE)? A Clear Guide to How It Works

The PoE switch supplies power, the Ethernet cable carries both power and data, and the device receives everything through one connection. This is the most straightforward PoE



What is a PoE Switch

A Power over Ethernet switch is a network switch that has PoE functionality integrated. Learn about different variations, limitations and benefits of PoE switches.



What Is a PoE Switch? Complete 2025 Guide (For

Learn what is a PoE switch, how it works, types, power budgets, and real uses. Simple 2025 guide for home, office, and installers and shops.



PoE Switch Tutorial: Simplifying Network Power

However, to take full advantage of a PoE switch, it's crucial to understand how to use it properly. In this blog, we will guide you through the key

What is a PoE Switch? [Comprehensive Guide]

A PoE switch delivers power and data over Ethernet, simplifying network setups and reducing costs for devices like IP cameras, phones, and



Why an Outdoor PoE Switch is a Game-Changer for Network Reliability

Understanding Outdoor PoE Switches Outdoor PoE Switches are designed to facilitate the deployment of network devices like IP cameras, wireless access points, and VoIP phones in outdoor environments.



What is a PoE Switch? Learn PoE Switch Benefits

Learn everything about PoE switches-how they work, their key benefits, common applications, limitations, and how to choose the right one for



How to Understand PoE and PoE+ Switches

Power-over-Ethernet (PoE) is the technology that allows network switches to transmit power and data through an Ethernet cable at the same time. PoE switch streamlines both of the

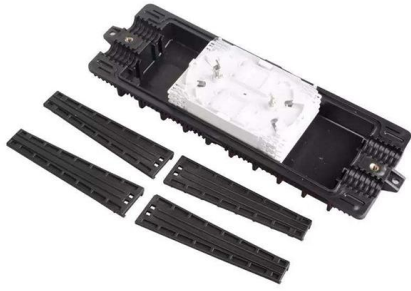
The Brains of the Operation: Understanding NVRs in IP Security

Built-in PoE (Power over Ethernet) Switches For small to medium-sized installations (typically 4, 8, or 16 channels), many modern NVRs come equipped with a built-in PoE switch on the



What is a PoE switch (Power over Ethernet switch)?

Power over Ethernet switch (or PoE switch) is an access layer technology that combines data signals and electrical power into a single Ethernet



What Is a PoE Switch? Complete 2025 Guide (For Everyone)

Learn what is a PoE switch, how it works, types, power budgets, and real uses. Simple 2025 guide for home, office, and installers and shops.



Prevent Security Camera Water Damage in 2026 , Montavue

Protect your IP security cameras from water damage. Learn expert installation tips, like using junction boxes and sealing PoE connections for longevity.

What Is a PoE Switch and How It Works: Basics and

Discover what a PoE switch is, how it works, and where it's used. ABPTTEL offers high-quality PoE solutions for smart networks, surveillance





What is Power Over Ethernet (POE)?



A Power over Ethernet switch (POE switch) is a network switch with built-in Power over Ethernet injection. Simply attach other network devices to the

What is a PoE switch? The Smart Networking Solution

A PoE switch, or Power over Ethernet switch, is a network switch that transmits both electrical power and data through a single Ethernet cable. This



What Is PoE Switch: A Complete Guide

It is a device that transmits data and supplies power to connected devices via a single Ethernet cable. This article explains the definition of this



AOL Video

The AOL video experience serves up the best video content from AOL and around the web, curating informative and entertaining snackable videos.

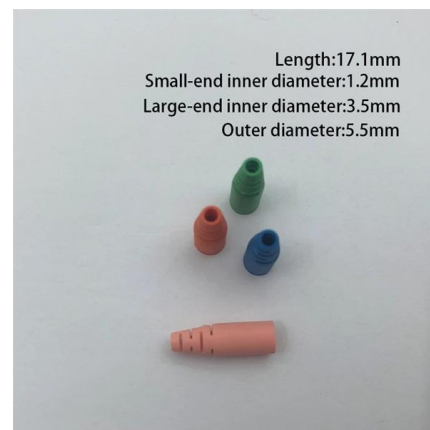


#cctv #securitysystems #techtips #installers

? How a Multi-Story Building CCTV System Works
This diagram explains how a professional surveillance system is designed for a high-rise building. ? Step-by-Step Explanation 1? Cameras

A Comprehensive guide to PoE Switches and their Uses

A PoE (Power over Ethernet) switch is a network switch that delivers both power and data through a single Ethernet cable to connected devices such as IP cameras,



What is a poe switch and how to select it?

When choosing a PoE switch, it is important to understand the different types of PoE network switches available. There are two main types of



Contact Us

For datasheets, pricing, or custom telecom energy solutions, please visit:
<https://koskolong.co.za>