



Adam Tas Corridor Energy

How to use a multimeter to test the condition of a photoreceptor





Overview

If the multimeter is not auto-ranging, change the knob to a very high level, such as megaohms. Understanding how to accurately test a photocell with a multimeter is essential for ensuring its proper functionality and troubleshooting potential issues. This in-depth guide provides a comprehensive overview of the process, from fundamental principles to practical applications, enabling you to. In this guide, we'll walk you through the steps to test an LDR using a multimeter.



How to use a multimeter to test the condition of a photoreceptor



Simpson 260 Analog Multimeter Manual-Ranging Fuse Door Access Test

Find many great new & used options and get the best deals for Simpson 260 Analog Multimeter Manual-Ranging Fuse Door Access Test Leads at the best online prices at eBay! Free

How To Test Photocell With Multimeter? A Simple Guide

This comprehensive guide will equip you with the knowledge and practical steps to test a photocell using a multimeter, a common and essential tool for any electronics enthusiast or technician.



How to Test a PNP Transistor with a Digital Multimeter: Step-by-Step

Learn how to use a digital multimeter to test PNP transistors. Without blindly replacing components, you can quickly confirm whether the transistor is in good condition, short-circuited or

How To Test A Photocell Sensor With Multimeter? Simple Step-by

The step-by-step guide provided clear instructions on how to test a photocell sensor



using a multimeter. This included setting up the multimeter, connecting the probes, taking readings in both



How To Test A Photocell With A Multimeter?

Whether you're a seasoned electronics enthusiast, a student, or a technician, this guide will equip you with the necessary knowledge to effectively test photocells using a multimeter.

How to Test a Photocell?

Learn how to test a photocell effectively in our guide, covering step-by-step procedures, tools needed, and tips for accurate and safe testing.



How To Test A Photocell With A Multimeter?

A multimeter measures this resistance. Different light conditions yield different resistance readings. Analyzing results helps determine photocell performance. Frequently Asked Questions



Testing a Photocell , Photocells , Adafruit Learning System

This guide will show you how they work, how to wire them, and give you some project ideas.



How to test photocell with multimeter: the ultimate guide for

Place the photocell in the dark enclosure and record the resistance reading on the multimeter. If the photocell fails to exhibit a change in resistance when illuminated, perform a

How To Test A Photocell With A Multimeter?

Practical Applications Photocells find wide use in various applications, from automation to lighting controls. Understanding their functionality and testing methods is critical to ensuring reliable



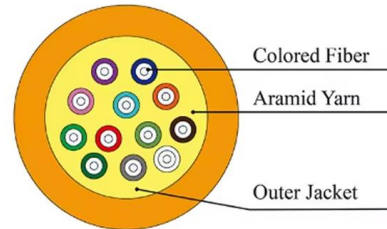
How to Test Solar Panels with Multimeter (3-Step Guide)

Testing a solar panel for current, voltage, and resistance is easy with a multimeter. In this 3 Step-guide, we teach you how to properly do it.



How to Test LDR with Multimeter: A Step-by-Step Guide

How to Test LDR with Multimeter: A Step-by-Step Guide Light-dependent resistors (LDRs), also known as photoresistors, are crucial components in many electronic



How To Test Photocell With Multimeter? A Simple Guide

Summary and Recap Testing a photocell with a multimeter is a fundamental skill for anyone working with electronics. This process involves setting the multimeter to resistance mode,

How To Test Diode With Multimeter

Learn how to test diode with multimeter effectively to ensure the reliability and performance of your electronic devices in our easy-to-follow guide.





How To Test Electrical Components with a Multimeter

When working with electrical components or in an electrical environment, troubleshooting and testing devices to assess their condition is vital to maintain a safe, efficient workspace.



How To Use A Multimeter To Test Light Fixtures

An easy way to test a light fixture is to remove the bulb and replace it with one that you know is working. If you don't happen to have a working bulb



How to Read a Multimeter: The Ultimate Guide

Your go-to guide for mastering multimeter use - learn how to accurately read, measure, and diagnose with confidence. Ideal for all skill levels.

How to Perform a Diode Test Using a Multimeter

How to Test a Diode with a Multimeter To check a diode using a multimeter, use the diode tester mode if available. If not, you can still check the diode with a multimeter in resistance mode,



How to Use a Multimeter: A Comprehensive Guide , Fluke

Learn how to use a multimeter in this comprehensive guide with detailed video featuring expert instruction and tips to ensure success.



How To Test All Electronic Components with Multimeter , Resistor

In this video, I have shown How to test all the basic electronics components like resistor, capacitor, diode, LED, transistor, fuse with a multimeter. As this is complete multimeter Tutorial for



How To Test Sensors With Multimeter?

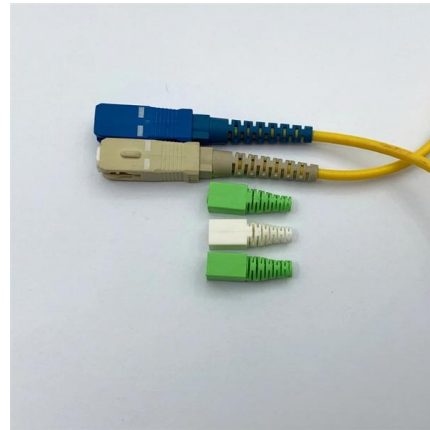
To test them, you'll use the multimeter's Ohms (O) setting. Procedure: (See Also: How To Check Submersible Pump With Multimeter? A Step-By-Step Guide) De-energize the Circuit:





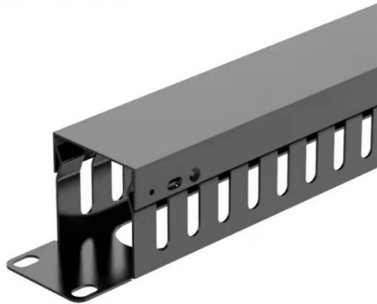
How to Test a Transistor using Multimeter (DMM+AVO)

How to Find the Base, Collector, Emitter, Direction & Condition of Transistor by Multimeter
How to remember the direction of PNP and NPN Transistor & Pin



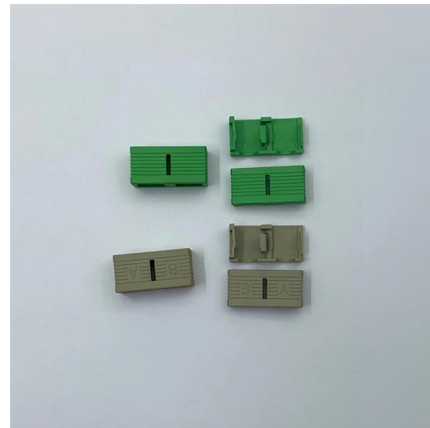
Unveil the Secret: How to Test Photocell with Multimeter

This guide will provide a detailed walkthrough on how to test photocell with multimeter, empowering you with the knowledge to diagnose and troubleshoot any issues effectively.



How to Test Diodes with a Multimeter: A Step-by-Step Guide

Testing diodes is an essential skill for anyone working with electronic components. To accurately test a diode, I use a digital multimeter set to diode test mode, ensuring I have the right



How to Test LDR with Multimeter: A Step-by-Step Guide

Testing an LDR with a multimeter is a straightforward process that can help you verify its functionality. In this guide, we'll walk you through the steps to test an





Illuminate your understanding: the ultimate beginner's guide to testing

Understanding how to test photocells with a multimeter is crucial for troubleshooting and ensuring proper functioning in various applications. This comprehensive guide will equip you with the



How to Test a Diode? Using Analog and Digital

In this tutorial, we will learn how to test a diode. Diodes are one of the basic and important components in electronic circuits that are used for protection,

How to Test Solar Panels with a Multimeter

Learn how to test solar panels with a multimeter step by step, including how to check voltage, current, and resistance to diagnose panel problems.



How to Use a Multimeter to Test a Circuit: Step-by-Step Guide

How to Use a Multimeter to Test a Circuit: Step-by-Step Guide Understanding and troubleshooting electronic circuits is a fundamental skill for any DIY enthusiast, electrician, or



How To Check A Photocell

To check a photocell, use a digital multimeter. Turn the multimeter on, and place it on the setting for resistance. Resistance is usually indicated by the



How to test photoresistor with pointer multimeter-EEWORLD

Use a piece of black paper to cover the photosensitive surface of the photoresistor. During measurement, the pointer of the multimeter should remain basically motionless and the resistance

Contact Us

For datasheets, pricing, or custom telecom energy solutions, please visit:
<https://koskolong.co.za>