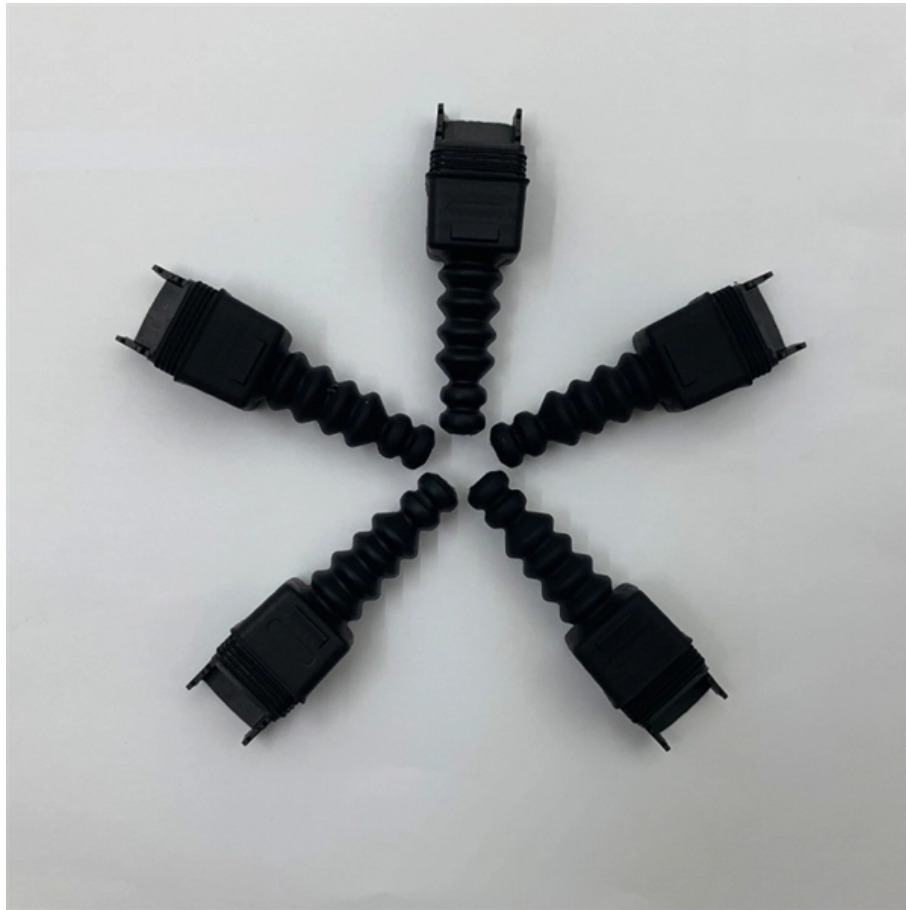




Adam Tas Corridor Energy

How to use a ring network industrial switch





How to use a ring network industrial switch



Microsoft Word

Introduction Unlike office Ethernet 'star' networks, industrial control applications tend to favour 'ring' topology. The 'ring' simplifies cabling and provides inherent redundancy. The basic building block for

X-Ring Plus Ethernet Industrial Ring Technology

X-Ring Plus resilient ring technology is provided with network operating system 2.0 & is an enhanced version of Case Communications 'X-Ring' technology.



Building Network Redundancy: Why Ring Topology Matters in

Learn why ring topology is vital for network redundancy in industrial Ethernet networks. Discover how it enhances reliability, minimizes downtime, and maintains stable communication in critical operations.

Industrial Lan switch how to group ring network

September 19, 2024 Industrial Lan switch how to group ring network In the industrial Internet of



Things, the Industrial Lan Switch group ring network is an important network architecture method that can



How to configure Ring network (ERPS) for industrial managed switch

ERPS is a standard ring network protocol, and it is the most popular function for managed ethernet switches. But many people met the problem in configuring the ring networks.

X-Ring Ethernet Industrial Ring Technology

Introduction to X-Ring Ethernet Industrial Ring Technology X-Ring Ethernet Industrial Ring Technology is supplied on the Case Communications range of Industrial



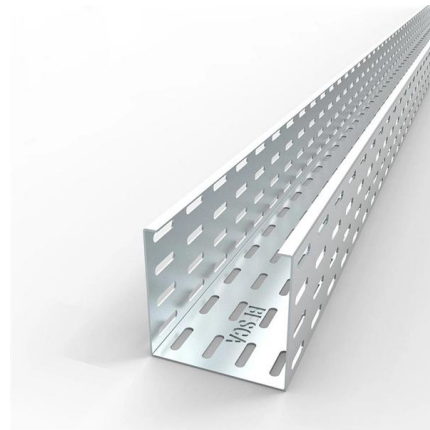
How to Implement Robust Ring Networks using RSTP and eRSTP

Overview This document outlines the recommended parameters of a layer 2 network comprising two levels of interconnecting rings. As shown in Figure 1, a central, "main" ring is built using



Function Overview of the Industrial Managed Switch

Industrial Managed Switches: Function Overview Administration and Diagnostics, Availability, Security, Data Transmission, Performance: All functions of the



How to Configure ERPS on Industrial Network Switch

Ring Network Protocol for Industrial Switch Generally, redundant links are used on an Ethernet switching network such as a ring network to provide link

Building Fault-Tolerant Industrial Ring Networks with

Industrial Ethernet switches are critical components in network infrastructures, often used in harsh environments and mission-critical applications. The Ethernet Ring



Industrial Automation Ring Network Solution

This solution builds a basic two-layer network architecture designed to decrease complexity, enhance security, and increase efficiency and operating uptime for



Industrial Lan switch how to group ring network

Before organizing the ring network, it is necessary to configure the switch as needed. This includes setting parameters such as the IP address of the switch, VLAN division, and port speed.



Real-time Redundant Ring Switch Industrial Ethernet Switch

Introduction The Real-time Redundant Ring Switch offers fault-tolerant industrial Ethernet with ring network topology. The built-in ICP DAS proprietary Cyber-Ring technology detects and recovers from

Industrial Ethernet Training 04 Setting up an O-Ring network structure

s three switches, we will use only these as an example for a configuration of O-Ring redundancy. First of all, please disconnect all cables and only connect your computer via Ethernet cable to your 8-port



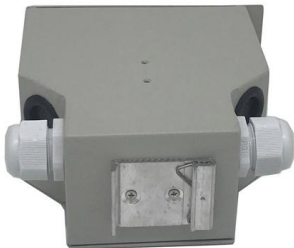


WAN Failover, Load Balancing and Port Remapping on

WAN Modes WAN interfaces in UniFi Network can be assigned to one of two operational modes: Failover, which prioritizes a single WAN and uses others only

Industrial Automation Ring Network Solution

Efficient Industrial Automation Network This solution builds a basic two-layer network architecture designed to decrease complexity, enhance security, and increase



Ring v2 Application Guide

This document is introduction of the Industrial Ethernet Switch Software Spec for Ringv2. In our current design, one device could support 3 ring index, they are include ring, coupling, dual-homing, chain,

Redundant Ring Technology for Industrial Ethernet Applications

For complex networks, the switches you use must support a variety of transmission speeds (10, 100, 1000 Mbps), transmission mediums (copper and fiber), and ring-to-ring redundant topologies (Ring



home > product > solutions > industrial ethernet switch

It is undoubted that the power of an Ethernet LAN (Local Area Network) is tremendous when applied to factory floor or industrial automation applications.



What Is Network Redundancy? Key Strategies for

Learn what network redundancy is and why it matters for industrial communication systems. Explore device, link, ring, and gateway redundancy



Perle P-Ring Protocol , Industrial Managed Switches

Perle's P-Ring feature, available on all IDS Managed Switches, eliminates this hassle by providing an easy to use method for configuring a ring network that uses





Cisco Catalyst Center for Industrial Ethernet

Explore how to use REP capabilities on Cisco Industrial Ethernet switches to create a redundant network path in a ring topology for fast recovery from network failures.



Rapid Spanning Tree Protocol in Ring Network

In this case, Industrial Ethernet Switches provide some protocols to ensure this service. Ring protocol, HRP, MRP, RSTP are some protocols that can

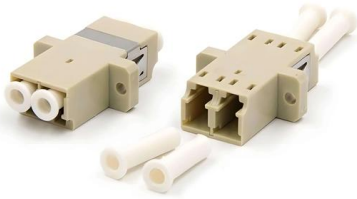
How to configure Ring network (ERPS) for industrial

ERPS is a standard ring network protocol, and it is the most popular function for managed ethernet switches. But many people met the problem in



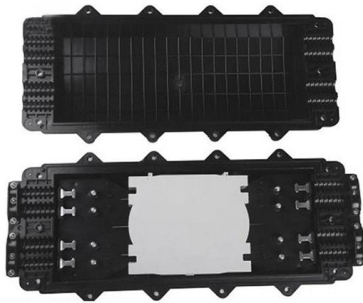
How Industrial Switches Build Industrial Ring Networks

The key features of industrial switches that contribute to the effectiveness of ring networks include their high availability, reliability, and scalability. Industrial switches are designed to



Ethernet Ring Redundancy

Figure 2, shows a network with spanning tree automatically blocking one of the redundant or ring path connections. Spanning Tree will set a port on one of the switches to a blocking state so that it will not



Industrial Ring Networks , ERPS , Antaira Technologies

The Ethernet Ring Protection Switching (ERPS) protocol is a powerful technology and service that can be used on industrial switches to ensure high network availability and prevent network downtime.

Contact Us

For datasheets, pricing, or custom telecom energy solutions, please visit:
<https://koskolong.co.za>