



Adam Tas Corridor Energy

How to use bus connector tools





Overview

Find Repeat to connect PJ1 (Pin 2) to PJ3 (Pin A) and PJ1 (Pin 3) to PJ4 (Pin A). When you are drawing a schematic that requires many nets, it will be very difficult and time consuming to draw lines for each net, and you can use the "bus" function. In EasyEDA Pro, the bus function already has the direction of the signal beam, which can be applied to the PCB. The guidelines on these pages are intended to help A 2 B users configure and use the Analog Devices' (ADI) A 2 B Bus Analyzer tool in Monitor and/or Node Emulator modes for AD242x and AD243x devices with HDAC/Duraclik connectors. Multiple nets can be bundled into a bus if they are members of a numerically incrementing set, such as Data0, Data1, etc.



How to use bus connector tools

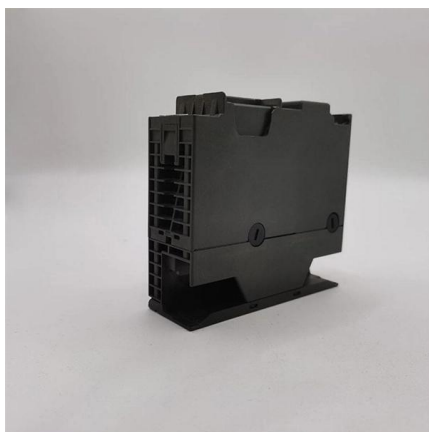


Wiring Tools , EasyEDA Std User Guide

Don't use a wire when you just need to draw a line, shape or an arrow: use Drawing Tools instead. There are three ways to enter the wire mode in

Use Service Bus Explorer to run data operations on

This article provides information on how to use the portal-based Azure Service Bus Explorer to access Azure Service Bus data.



Bundling Multiple Nets into Buses & Signal Harnesses

Explore Altium Designer technical documentation for Bundling Multiple Nets into Buses & Signal Harnesses and related features.

Plug connectors, cables and switches

The plug connector assignment and the wiring are shown in the diagram below. Note the special



requirements on the data cable for baud rates greater than 1.5 Mbaud.



Understanding Buses In Pro Tools

A bus is an internal connection within Pro Tools and it can be used to send combinations (or "mixes") of signals from place to place within the mixer. If

Busbar Power Connectors/Distribution , High Current

Amphenol offers high-performing, low-resistance Busbar connectors with designs to conveniently distribute power between busbars, cables, and



Wiring Tools , EasyEDA Std User Guide

Bus When you design a professional schematic, perhaps it will use a lot of wires. If you wiring one by one, much time would be wasted, and then you



Release tools and connectors Archive

Release tools and connectors We offer release tools for all situations! Our product range also includes vehicle crimp connectors and much more. Learn more here!



How to Create a Master Bus in Pro Tools: A Quick and

Pro Tools is a popular DAW (Digital Audio Workstation) used by many professional studios for music production. Creating a master bus in Pro Tools is a



Creating Bus Vectors in Multisim , PDF , Computing

This document provides instructions for creating bus vectors in Multisim, including placing buses manually, connecting buslines automatically,



A2B Bus Analyzer Quick Start Guide [Analog Devices Wiki]

The guidelines on these pages are intended to help A 2 B users configure and use the Analog Devices' (ADI) A 2 B Bus Analyzer tool in Monitor and/or Node



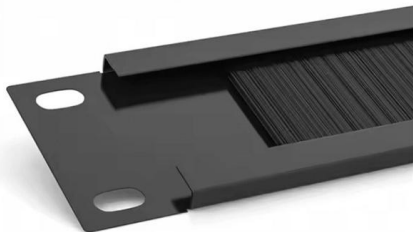
Choosing the Right Electrical Bus Bar Connector for

Cover various types of bus bar connectors, such as bolted, compression, and clamp connectors, and provides expert tips for making the best



Release tools and connectors from the professionals

RELEASE TOOLS FOR PROFESSIONALS In the interior of modern vehicles, everything has become much smaller and more delicate when it comes to the



An Easier Electronic Circuit Design Experience

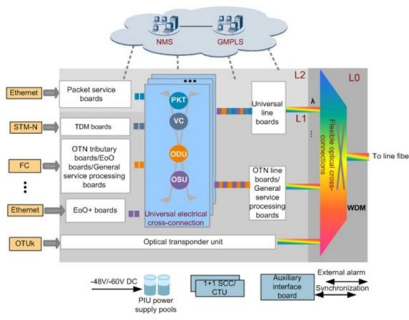
For passive schematics (i.e. not for simulation) you can use the **Bus** button on the **Wiring Tools** floating palette to trace out the bus. Then use the **Bus Entry** button next to it on the same palette





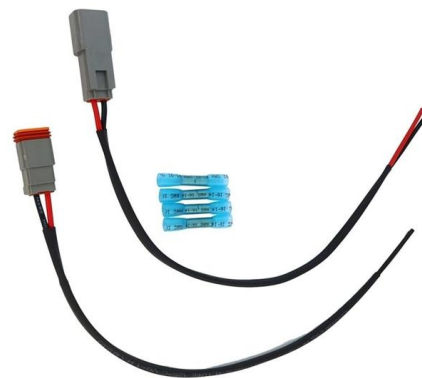
mikroBUS

The mikroBUS(TM) socket comprises a pair of 1x8 female headers with a proprietary pin configuration and silkscreen markings.



GitHub

The Service Bus Explorer allows users to connect to a Service Bus namespace and administer messaging entities in an easy manner. The tool provides advanced



Wiring connectors

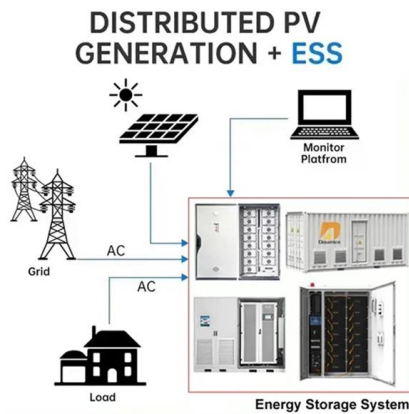
Black Box 1 is associated to a larger component such as a power box. Black Box 2 - Black Box 4 are smaller components that are part of the power box. The



Use Wire Bus Bus Entry & Net Level Tools in EasyEDA

Subscribed 51 3K views 2 years ago Use Wire, Bus, Bus Entry & Net Level Tools in EasyEDA more



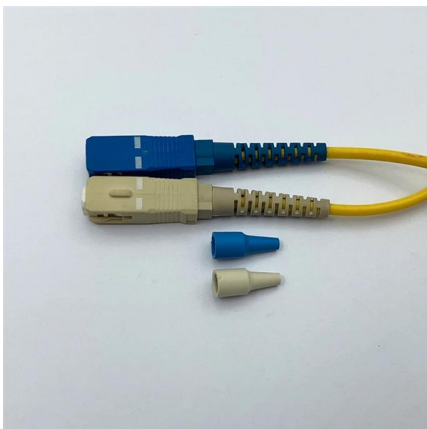


IFTOOLS RS485 field-bus and protocol analyzer features

The analyzer is inserted into the bus and becomes the interface between any two bus segments. The data, flowing through this interface, are collected together

i-bus Tool

Functions 1 For each supported device there is a unique user interface (plug-in) within the i-bus® Tool New functions and plugins are automatically made available by an online update and can be loaded



More Details About Drawing Nodes, Buses & Conduits

However, if two node or bus lines cross over each other, that does not necessarily constitute a logical connection. When you use the Selection and Smart Drawing Tool to connect objects in a Block

ABB i-bus® Tool

General Features ABB i-bus® Tool is an additional software tool to make life easier when working with ABB i-bus® KNX devices It supports system integrators and installers during commissioning and



Contact Us

For datasheets, pricing, or custom telecom energy solutions, please visit:
<https://koskolong.co.za>