



**Adam Tas Corridor Energy**

# **How to weld ceiling-mounted cable tray supports**





## How to weld ceiling-mounted cable tray supports

---

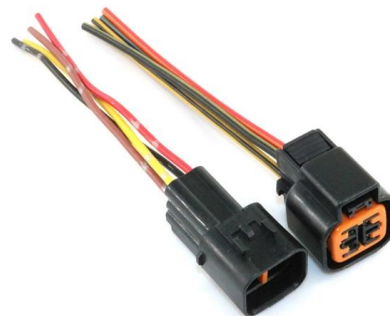


### Best Fixing and Mounting Options for Cable Trays , CMW

Regarding cable management, the fixing and mounting you choose for your cable trays can make or break your setup. Whether you're managing voice, data, or electrical cables, ensuring

### Ceiling Cable Tray, Cable Tray Electrical Manufacturer

NewReach's ceiling cable trays provide an effective solution for organizing and managing cables in various environments, such as commercial buildings, data



### Mastering Cable Tray Welding: Tips for Seamless Installations

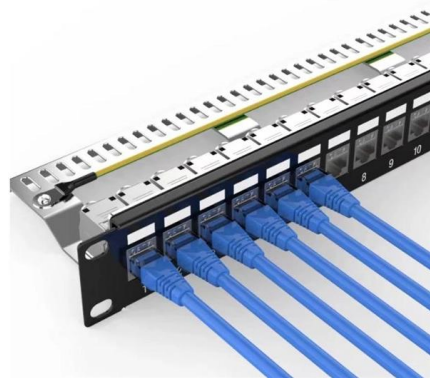
Cable trays are fixed using brackets, supports, or hangers securely mounted to walls, ceilings, or floors. The installation process involves aligning the trays properly to ensure stability and support for the

### What would be the best way to install a cable tray (or some

Putting up cable tray or ladder racking is no joke. It requires some strong supports. If it were my



ceiling space I would use grid wire and J Hooks. It doesn't look like you have enough cable to justify some



### Cable Tray Supports

Cable tray supports are indispensable for creating a reliable and efficient cable management system. Whether wall-mounted, ceiling-suspended, or floor



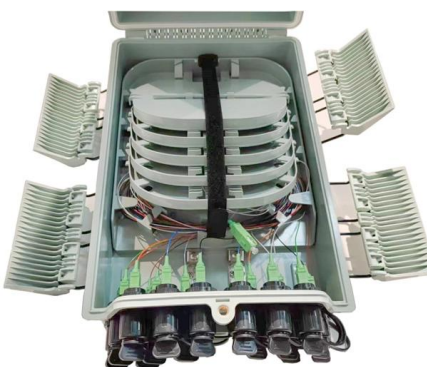
### Beama Best Practice Guide , Installation Of The System , Cable

The following recommendations are intended to be a practical guide to ensure the safe and proper installation of cable ladder and cable tray systems and channel support and other support systems.



### Best practice guide to cable ladder and cable tray

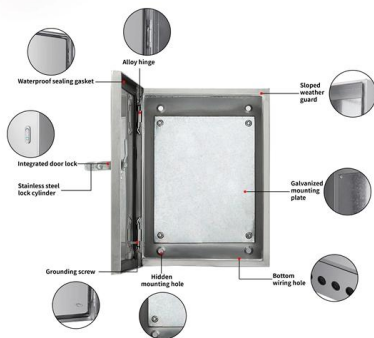
Cable ladder and cable tray systems The following recommendations are intended to be a practical guide to ensure the safe and proper installation of





## Mastering Cable Tray Welding: Tips for Seamless Installations

Cable tray welding is a critical process for assembling secure and durable cable tray systems. Whether for industrial or commercial applications, the steps and techniques involved ensure safety, stability,



## Ceiling-suspended cable tray for indoors & outdoors o PFLITSCH

Extremely hygienic design Our Wire-tray Trunking is a cable routing solution that meets the highest demands on hygiene in the food and pharmaceutical industries. To ensure that the fastenings for the

## INSTALLATION GUIDE

To ensure that the complete ladder tray wiring system performs as designed, it is important that it is properly installed. Personal injury as well as property damage will result if proper installation and



### Pre-Terminated Patch Panel

- Multi-application support
- Flexible configuration
- Modular design



Multi-functional Sliding Patch Box, Modular



Modular Sliding Patch Box



Sliding Patch Box, Modular

## Cable Tray Supporting Structure

Wall-mounted brackets: These brackets allow the cable tray to be attached directly to a wall, providing a sturdy and secure means of support.  
Ceiling-mounted



## Cable Tray Technical Guide A practical guide to product selection and

Cable tray length is selected based on the load to be supported, the distance between the supports (also referred to as the span), and handling and installation constraints.



## How to Install Cable Tray: A Comprehensive Guide to Different Cable

Welcome to our step-by-step guide on installing cable trays! In this video, we'll explore the different types of cable trays available and provide detailed instructions for their installation.

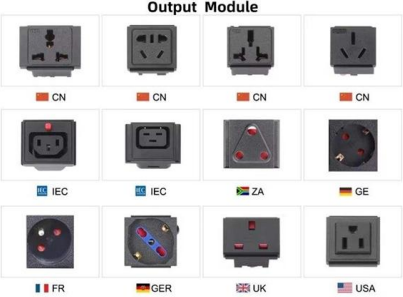
## Cable Tray Installation

Learn everything about cable tray installation with our complete guide. Discover types, steps, and safety tips for efficient electrical cable management.



## CABLE TRAY AND ELECTRICAL EQUIPMENT

Tools and equipment needed for cable tray support installation should be in good condition and must be checked by Supervisor / Safety Engineer prior to use in the



**Why Choose Us**

- 20 Years of OEM/ODM**  
20 Years factory manufacturing experience.
- Professional R & D team**  
30 years experience in electrical electronic engineer.
- Fully Certified**  
Our products are certified CE, UL, TUV, ISO9001, ISO14001 etc.
- Timely Delivery**  
21 production lines, 500 employees, Timely delivery guaranteed.
- Quality Assurance**  
Professional QC team with full process inspection.
- After-sales service**  
After Sales Service for Customer Satisfaction.

# Master Cable Tray Installation: A Professional Step-by

Learn how to install cable trays for large-scale projects with our professional, step-by-step guide covering industry standards, safety protocols,



## Cable Tray

With the RS 60 cable tray installation system, we offer you the last installation type of the standard support construction, so that you can implement all installations



OM3 Fiber Patch Cable Family

# A Guide to Installing and Supporting Electrical Cable Trays

A professional guide to installing electrical cable tray systems per NEC Article 392. Covers support, securing cables, and fill calculations.





## Technical Specification for Cable tray installation and cable laying work



1. Scope :- This specification covers the following major activities; - Fabrication and installation of Mild Steel (MS) support structure for Galvanized Iron (GI) Cable tray. - Installation of perforated GI Cable

### Guide to cable support systems

The systems are suspended from the ceiling with threaded rods, stand-off brackets allow raised floor mounting of cable trays, ladders and mesh cable trays. The universal systems comprise ceiling



### Decoding Cable Tray Support Structures: Tips and Insights

Discover efficient cable tray support structures for optimal cable management. Learn about hanger, wall-mounted, and Unistrut systems for safer

### Cable Tray Support Weld Design Analysis , PDF

The document discusses the weld design for connections of different sized cable trays. It provides maximum and minimum force calculations for beams of various



### **Cable Tray Technical Guide A practical guide to product selection and**

SOLID-BOTTOM CABLE TRAY Providing additional cable protection, solid-bottom cable tray is sometimes preferred to support and protect numerous small instrumentation and control cables.



### **Guide to cable support systems**

Universal systems for cable support structures are used for small loads. The systems are suspended from the ceiling with threaded rods, stand-off brackets allow raised floor mounting of cable trays,



### **Cable tray support and its welding method**

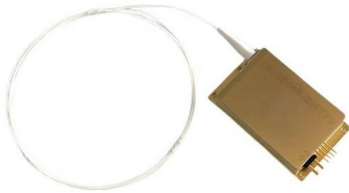
According to the cable tray support and the welding method thereof according to the embodiment of the present invention, the welded portion can be welded by the operator alone while





## Cable Tray Support Weld Design Analysis , PDF

Weld for Cable Tray Support - Free download as PDF File (.pdf), Text File (.txt) or read online for free. The document discusses the weld design for connections of



## CABLE TRAY SYSTEMS GUIDE

Hubbell's NEXTFRAME® Ladder Tray is the effective and widely used cable runway that supports and delivers bundles of cable between cabinets, racks, and closets, along walls, and suspended from

## Best Practice Guide to Cable Ladder and Cable Tray Systems

Cable ladder systems and cable tray systems are designed for use as supports for cables and not as enclosures giving full mechanical protection. They are not intended to be used as ladders, walk ways



## Contact Us

---

For datasheets, pricing, or custom telecom energy solutions, please visit:



<https://koskolong.co.za>