



Adam Tas Corridor Energy

How to wire a plasma terminal box





Overview

Use crimp-on spade or round terminals to attach the wires to the terminal strips. On some machines there may be more than one set of small wires and are used for sensing tip shorts and other conditions. It serves as a visual representation of the electrical system, indicating how all the components are connected and interact with one another. Amazon Plasma Cutter for CrossFire XR or Pro - BestArc BTC500XP CNC It's easy! In order to control your plasma unit, there are three main connections that need to be made to the plasma unit itself.



How to wire a plasma terminal box

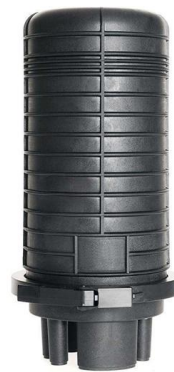


Microsoft Word

Connect the Plasma Interface to the start circuit of your plasma cutter. Typically the start circuit can be accessed through a pigtail that is located on the main torch cable, or through the CNC interface cable.

SJDrummond's CNC Plasma Wiring Diagram

I have recently been upgrading my CNC plasma electronics from a Openbuilds Blackbox 4x to a MESA 7i96S as I realised just how important THC is. In the process I have created this wiring



Say No to Terminal Cups! How to connect wire to a subwoofer box

So you have built a beautiful subwoofer box, its good and strong with plenty of bracing, and your cuts are all nice and precise so the seams of the box won't leak any air. You are ready to

I seem to have bi-wire or 4 terminal speakers that I'm

I seem to have bi-wire or 4 terminal speakers that I'm looking to connect to an old plasma TV. I



assumed they were 2 terminal and now I'm unsure of how or if it's



AcornCNC Plasma

A gear box or belt reduction is highly recommended on rack-driven machines. Typical gear box ratios used on rack-drive Plasma machines are 5:1 and 3:1. Ensure Machine design is in the



PLASMACAM cable PINOUT on POWERMAX 45XP

If hand torch .then you must follow the directions supplied by Plasmacam that are in their video manual. There are two wires (red black pair) that connect to screw terminals on the main



Motor terminal box connection methods, procedures

Motor terminal box connection methods, procedures Continued From Page 1 and reduce the stretching of the bolt as the lug material expands and con-tracts faster. An anti-oxidant material formulated for



Wiring up the plasma for cnc use

Find a terminal that has a wire directly to one of the two points you want to measure and connect your tip volts wires there. Some plasma units have special terminals for the raw tip volts.



How to Connect a Plasma Cutter to a CNC Control Unit

Learn the secrets of connecting a plasma cutter to a CNC control unit like a pro. Follow our step-by-step guide for perfect, hassle-free performance.

CNC Plasma Wiring Diagram V0.3

18 VDC open circuit voltage at START terminals.
Requires dry contact closure to activate.



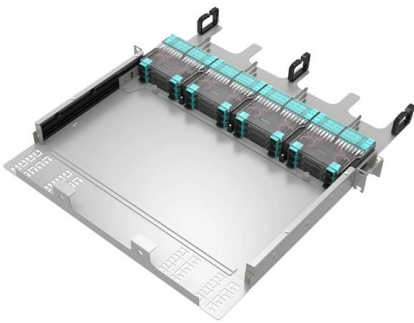
what is a terminal box

Definition of junction box A junction box, also known as a wire box or terminal box, is a closed container used to fix, protect and connect wires and



How to wire up the outlet for a plasma cutter?

[Note: I have linked the manual with the page below] This is a US model and it says 220V on it. I have the old HF plasma cutter model 95136. It's a 220 40Amp cutter and has 3 output wires. I



Plasma Cutter Wiring Diagram

All in all, a Plasma cutter wiring diagram conveys detailed information on circular connections of electrical lines, switch points and safety mechanisms to be followed while setting up a

A Simplified Wiring Diagram for Cnc Plasma

Learn how to wire a CNC plasma cutter using a detailed diagram. Find step-by-step instructions and helpful tips for a successful setup.



Wiring Guides for commonly used plasma systems with

Use the generic torch fire cable and appropriately sized T-tap connectors to tie into the "Start/Stop" wires behind the CNC connector. Locate



How to Wire a Junction Box for Socket and Light Circuits

How to Wire a Junction Box for Socket and Light Circuits How to wire an electrical junction box. A junction box is used to add a spur or to extend circuits and direct power to lights and additional sockets. Advice on wiring electrical junction box with easy to follow junction box wiring diagrams,



CNC Plasma / Oxy Fuel Cutting Machines > Plasmacam Connector

If you wire the raw arc voltage directly to the Plasmacam you will damage the control box. Also .Plasmacam advises against using a high frequency start plasma.



Hooking Up Your Plasma Machine to the MP1000-THC

In order to control your plasma unit, there are three main connections that need to be made to the plasma unit itself.

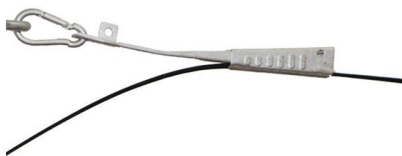


Plasma Cutter Wiring Diagram

Start the wiring process by attaching the red memory wire to the inverter and the negative terminal of the battery. Next attach the ground or neutral wire to the metal chassis of the plasma cutter.

A Step-by-Step Guide to Wiring an Electrical Panel Box

Find out how to properly wire an electrical panel box with a comprehensive diagram and step-by-step instructions.



MyPlasm CNC monta? EN

In order to connect MyPlasm CNC and Plasma Interface modules, one should use a shielded wire of the length up to 15 meters. Shielding must be connected only at the side of the MyPlasm CNC controller



How to Wire a Plasma Cutter to 220V

Cut 50 Plasma Cutters are popular tools in many houses! Here is how to wire a plasma cutter to 220V. Great tutorial on the Cut 50 Wire Connection.***CUT50



how to wire a terminal block: Step-by-Step Installation

Step 5: Release Wires from Spring-Clamp Terminal Blocks To release a wire from a spring-clamp terminal, insert a small flathead screwdriver or

Torch on/off internal control box wiring

I'm looking to rewire this control box as it should with the Torch ON/OFF input. Can anyone shed some light as to how it should be wired? Share



Contact Us

For datasheets, pricing, or custom telecom energy solutions, please visit:
<https://koskolong.co.za>