



**Adam Tas Corridor Energy**

# **How to wire the fiber optic amplifier sensor head**





## Overview

---

Two power lines: brown (24V), blue (0V); black signal wire; fiber core (you can buy them according to your own needs), it comes with an optical fiber bundle jacket and a fixed pedestal. Connect brown wire and blue wire to DC 24V switching power supply; connect black wire to relay 0V. Digital fiber optic sensor is used for detection, counting and position control in the occasions with high accuracy requirement and small space. For the fiber head (sold separately) to be used in combination with this product, make sure to use the one whose connection with this product is guaranteed, such as FT (thru-beam type), FD (reflective type), and FR (retroreflective type). Select the right product for each element for the consideration of its function.



## How to wire the fiber optic amplifier sensor head

---

### Keyence Digital Fiber Optic Sensor (FS-N11CN) Setup



Introduction This guideline explains how to setup and mount the Keyence Digital Fiber Optic Sensor (FS-N11CN). Tool List No tools are necessary to setup the Keyence Digital Fiber Optic

### Optical Fiber Sensors Guide

Optical fiber sensors offer attractive characteristics that make them very suitable and, in some cases, the only viable sensing solution. Some of the key attributes of fiber sensors are summarized below.



### Technical Explanation for Fiber Sensors

What Is a Fiber Sensor? A Fiber Sensor is a type of Photoelectric Sensor that enables detection of objects in narrow locations by transmitting light from a Fiber Amplifier Unit with a Fiber Unit.

### Fiber Optic Sensor [Working Principle, Fiber Optic

One of the most widely used and unique sensors in the field of factory automation environments



and electricity is the fiber optic sensor. Fiber optic sensors also



### **Manual Sensor Keyence , PDF , Optical Fiber , Amplifier**

When connecting thin fibers to the FS-V31 amplifier, an adapter is required for proper detection. This is because thin fibers have different specifications and might not fit



### **Digital Fiber Sensor Amplifier FX-505 -C2**

Be sure to fit the attachment to the fibers first before inserting the fibers to the amplifier. For details, refer to the instruction manual enclosed with the fibers.



### **Digital Fiber Sensor FX-100 series INSTRUCTION MANUAL**

Be sure to fit the attachment to the fibers first before inserting the fibers to the amplifier. For details, refer to the Instruction Manual enclosed with the fibers.





## OMRON E3X-NA SERIES MANUAL Pdf Download

View and Download Omron E3X-NA Series manual online. User-Friendly Fiber-Optic Amplifier. E3X-NA Series amplifier pdf manual download. Also for: E3x-na11, E3x



## ITPro Today, Network Computing, IoT World Today combine

ITPro Today, Network Computing and IoT World Today have combined with TechTarget . The page you are looking for may no longer exist.

## FIBER OPTIC SENSOR GUIDE

The cables near the insertion part of the fiber optic amplifier and the hood of the unit have a high possibility will be broken. Do not bend the cable within the length of 20 mm or more like



## Fiber Optic Sensors

Integration is also made easy through reduced wiring options and fiber optics with integrated status indicators. This is a series of fiber optic sensor heads designed



## CHAPTER 09 FIBER OPTIC SENSORS

communication system via using fiber optics there was a great demand to measure and sense the rate of data transmission, change in phase, intensity, and wavelength and in the case of incentive



## Fiber Optic Sensors and Amplifiers

Omron's high-performance fiber optic sensors and amplifiers come in a wide variety of configurations to meet your specialized requirements.

## How to Setup Fiber Optic Sensor?

Fiber optic amplifier can be used as a type of beam or diffuse sensor. The combination of fiber amplifiers and fiber sensing can meet the induction





### CSM\_FiberSensor\_TG\_E\_2\_1

What Is a Fiber Sensor? A Fiber Sensor is a type of Photoelectric Sensor that enables detection of objects in narrow locations by transmitting light from a Fiber Amplifier Unit with a Fiber Unit.

### Digital Fiber Sensor Amplifier FX-505 -C2

12 OPTICAL COMMUNICATION When the setting of data bank loading / saving, copy setting, or copy action setting is conducted via optical communications, cascade the sub amplifiers right side to the

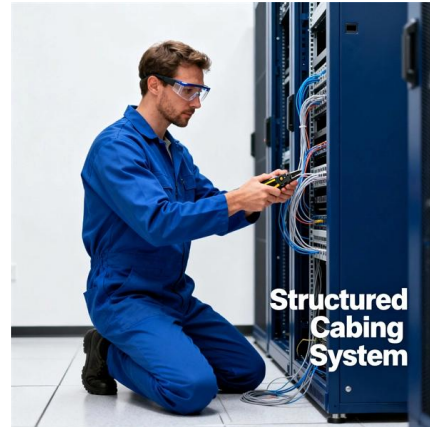


### Tutorial on Fiber Amplifiers

A comprehensive physics-based tutorial on fiber amplifiers. Learn about rare earth ions, gain and pump absorption, steady state, ASE, forward and backward

### Digital Fiber Optic Sensor/Amplifier Wiring and Setting

Fiber optic sensor has a digital LED display and 3-wires out lines. Digital fiber optic sensor is used for detection, counting and position control



### **OBF501**

Products Sensors Photoelectric sensors Fiber optic amplifiers for acrylic fibers, Type OBF OBF501

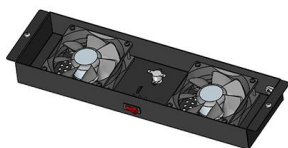
### **Fibre Optic Sensors**

Fibre Optic Sensors Omron's fibre optic portfolio contains hundreds of sensor heads designed to cover virtually any fibre application requirement, this guide simplifies choosing by listing the most



### **INTELLIGENT DIGITAL FIBER OPTICAL SENSOR**

To connect coaxial reflector optical fiber unit to amplifier, please connect the single core 2 Wh





## How to Setup Fiber Optic Sensor?

Fiber optic sensor is a new all-optical amplifier used in fiber optic communication line to achieve signal amplification. It is divided into communication supplies and

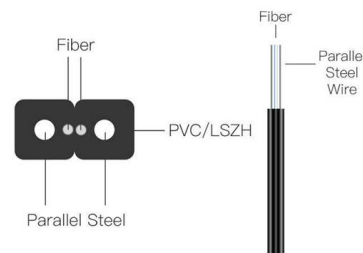


## Specifying Fiber Optic Sensors

The fiber optic cable is actually two devices specified as a single device. It includes the optic sensor head and the fiber cable that transmits light to

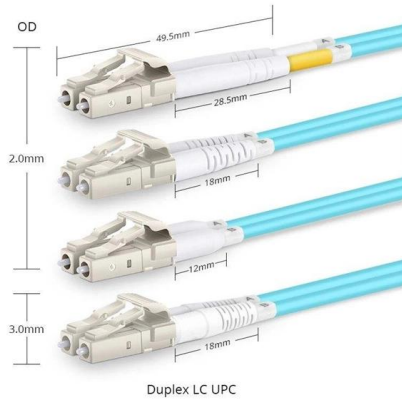
## Fiber Sensors

The Fiber Unit can be installed close to the sensing object. This allows you to freely select where to install the Fiber Amplifier Unit. 4. Virtually No Sensing Object



## Digital Fiber Sensor Amplifier FX-500 Series PRO MODE

Number of adherence mounting of sensor head de-pends on response time of interference prevention function. " ": Set when using the interference preven-tion function by optical communication.



## Fiber-optic sensor

A fiber-optic sensor is a sensor that uses optical fiber either as the sensing element ("intrinsic sensors"), or as a means of relaying signals from a remote sensor to the electronics that process the signals



## Fiber Optic Sensor : Types, Working, Interfacing & Its

The fiber optic sensor working principle is that transducer changes some optical fiber system parameters like wavelength, intensity, phase,

## Contact Us

For datasheets, pricing, or custom telecom energy solutions, please visit:  
<https://koskolong.co.za>