



Adam Tas Corridor Energy

Huawei 5735 Optical Module



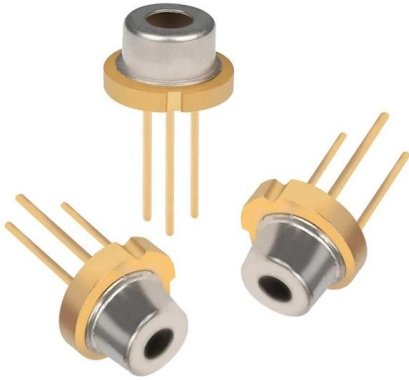


Overview

Based on the next-generation high-performance hardware and Huawei's Versatile Routing Platform (VRP), the CloudEngine S5735-S-V2 series hybrid optical-electrical switches support enhanced Layer 3 features, easy O&M, flexible Ethernet networking, and mature IPv6 features. A 10/100/1000BASE-T Ethernet electrical port sends and receives service data at 10/100/1000 Mbit/s. The Huawei S5735-L48P4X-A stands as a premier solution for modern enterprise access, offering a high-density gigabit foundation for digital transformation. Within the fast-paced world of industrial networking, the S5735-L48P4X-A Huawei switch provides a "simplified" yet powerful architecture. Huawei CloudEngine S5735-L-V2 series are simplified gigabit Ethernet switches that provide 24/48 x GE downlink ports, 4 x GE or 10GE uplink ports and 2 x 12GE dedicated stack ports.



Huawei 5735 Optical Module



Displaying Optical Module Information

When certifying an optical module, Huawei comprehensively verifies the functions of the optical module to ensure the optical module quality. The functions include the installation and removal, transmit and

Buy Huawei Original S5735-S48T4XE-V2 Switch Best Price

Optical Switch Huawei S5735-S48T4XE-V2 Switch
Huawei S5735-S48T4XE-V2 Switch 5 Stars
RFQCategory: Optical Switch, S5700 Series,
8ISPs have ordered this in the past 4



Empowering Enterprise Connectivity: An In-Depth Look at the Huawei

Discover the details of Empowering Enterprise Connectivity: An In-Depth Look at the Huawei S5735-L48P4X-A Switch at LonRise Equipment Co. Ltd., a leading supplier in China for Optical

CloudEngine S5735-L-V2 Series All-Optical Switches Brochure

Built on next-generation, high-performance hardware and software platform, CloudEngine



S5735-L-V2 switches stand out with compelling features such as intelligent stack (iStack), flexible Ethernet

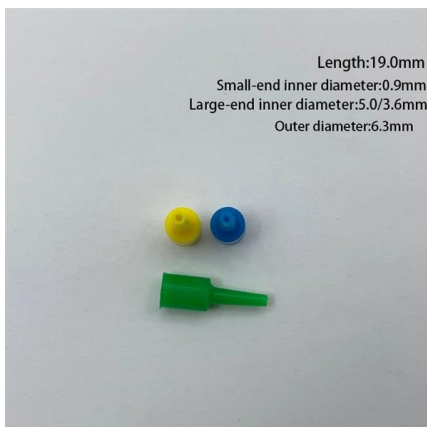


Huawei Unveils StarryLink Optical Modules That Deliver

To address these challenges, Huawei's StarryLink optical modules deliver a high-quality network experience with three key capabilities:
Spanning:

S5735-L8P4S-A-V2 (98011986)

Indicators and Buttons The S5735-L8P4S-A-V2 has similar indicators to those on the S5735-L8P2T4X-A-V2. For details, see the S5735-L8P2T4X-A-V2.



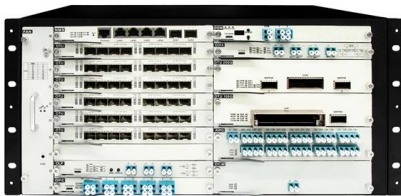
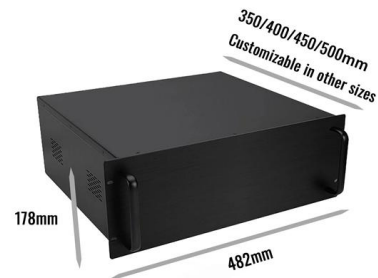
Huawei CloudEngine S5735-S-V2 Series All-Optical

Introduction CloudEngine S5735-S-V2 series all-optical switches are developed based on next-generation high-performing hardware and software platform.



How To Read Optical Module Information On Huawei Switches

The following uses the Moduletek SFP-10G-LR module connected to a Huawei S6700 switch as an example to introduce how to read information of the connected optical module on a Huawei switch.



S5735-S48P4X Datasheet Overview

Overview S5735-S48P4X is the Huawei S5735-S switch with 48 x 10/100/1000BASE-T ports, 4 x 10 GE SFP+ ports, PoE+. Huawei CloudEngine S5735-S is a series of standard gigabit access switches

Huawei S5735-L24P4X-A Switch 24xGE 4x10G SFP

Huawei S5735-L24P4X-A delivers 24xGE access, 4x10G SFP+ uplinks and PoE+ for APs/IP phones. Simplify campus access, ensure stable power and easy



Huawei S5700 Series Switches Best Price

S5700 Series S6700 Series S7700 Series CE6800 Series CE8800 Series Enterprise Router ME60 Series NE40E Series NE8000 Series WLAN Network Access Points Access Controllers Optical



S5735-L24P4XE-A-V2 (98012026-004)

Power Supply System The switch has a built-in AC power module and does not support pluggable power modules. The built-in power module can provide 400 W PoE power, which ensures full PoE



CloudEngine S5735-S-V2 Series Hybrid Optical

Based on the next-generation high-performance hardware and Huawei's Versatile Routing Platform (VRP), the CloudEngine S5735-S-V2 series hybrid optical

Huawei CloudEngine S5735-S-V2 Series All-Optical Switches Brochure

Huawei CloudEngine S5735-S-V2 series all-optical switches are standard gigabit Ethernet switches that provide all GE downlink ports, 10GE uplink ports and 2 stack ports.



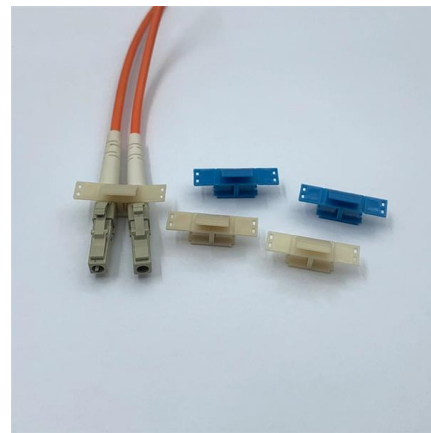


Optical Module Solutions for Huawei S5700/S5720 Series Switches

When using switches, we may encounter many confusions, such as what types of optical modules are needed for different models of Huawei switches, and how to resolve issues encountered

S5735-L24T4X-A1

Indicators and Buttons The S5735-L24T4X-A1 has similar indicators to those on the S5735-L24P4X-A1 except that the S5735-L24T4X-A1 does not have a PoE mode indicator. For details, see the S5735



Huawei CloudEngine S5735-S-V2 Series Hybrid Optical-Electrical

Huawei CloudEngine S5735-S-V2 Series Hybrid Optical-Electrical Switches Brochure Huawei CloudEngine S5735-S-V2 series hybrid optical-electrical switches are standard gigabit Ethernet

S5735-L48P4X-A

Power Supply Configuration The S5735-L48P4X-A is a PoE switch. It has one power module slot, which can have a 1000 W PoE power module installed. Table 4-1204 lists its power supply configurations.



S5735-L48P4X-A1

The switch has a built-in AC power module and does not support pluggable power modules. The built-in power module can provide 380 W PoE power, which ensures full PoE power on 24 ports in



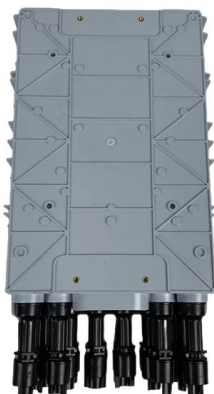
S5735-S48P4X Datasheet Overview

Overview ts, 4 x 10 GE SFP+ ports, PoE+. Huawei CloudEngine S5735-S is a series of standard gigabit access switches that provide 24-48 flexible all-GE downlink ports and four fixed 10 GE uplink ports.



CloudEngine S5735-L-V2 Series Switches , Huawei

Huawei S5735-L V2 Series switches are cost-effective and energy-efficient switches with simplified management for medium-sized campus networks. [Learn more.](#)





How to View Optical Module Parameters

Using a Command If an optical module is installed in a running device, you can run the display transceiver command to view parameters of the optical module, including the center wavelength,



S5735-L48P4X-A1

Power Supply System The switch has a built-in AC power module and does not support pluggable power modules. The built-in power module can provide 380 W PoE power, which ensures full PoE

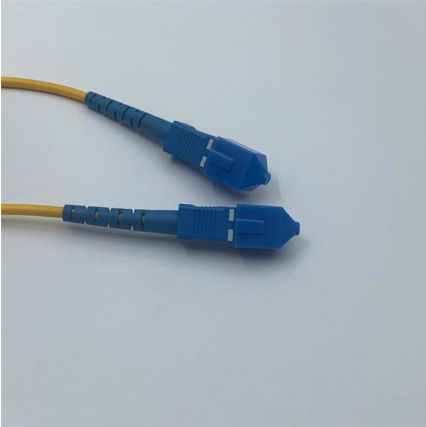
CloudEngine S5735-S-V2 Series All-Optical Switches

Huawei CloudEngine S5735-S-V2 series all-optical switches build on a next-generation high-performance hardware platform and a unified software platform



Huawei S3700, S5700 and S6700 Switches Support Guide, Manuals

S3700& S5700& S6700 Series CloudEngine S5735-L-V2: Access product manuals, HedEx documents, product images and visio stencils.



CloudEngine S5735-L-V2 Series All-Optical Switches Brochure

Huawei CloudEngine S5735-L-V2 series are simplified gigabit Ethernet switches that provide 24/48 x GE downlink ports, 4 x GE or 10GE uplink ports and 2 x 12GE dedicated stack ports.



S5735-S24ST4XE-V2 (98012231-001)

Each combo port matches only one internal forwarding port. A combo port can be configured as an electrical port or an optical port, but only one port can be active at a time. When one port is active,

S5735-L48P4XE-A-V2 (98012120)

It is used with a ground cable. A 10/100/1000BASE-T Ethernet electrical port sends and receives service data at 10/100/1000 Mbit/s. A 10GE SFP+ Ethernet optical port supports auto-sensing to 1000 Mbit/s.





Huawei CloudEngine S5735-L-V2 Series All-Optical

Datasheet Huawei CloudEngine S5735-L-V2 Series All- Optical Switches Datasheet Huawei CloudEngine S5735-L-V2 series are simplified gigabit Ethernet switches

Contact Us

For datasheets, pricing, or custom telecom energy solutions, please visit:
<https://koskolong.co.za>