



**Adam Tas Corridor Energy**

# **Huawei Fiber Optic Module Parameter Table**





## Overview

---

If you know the model or type of an optical module, you can view the section "Pluggable Modules for Interfaces" in the Hardware Description to look up parameters of the optical module, including the center wavelength, transmission distance, fiber types supported, receive optical. Huawei has model XFP-10G-1550NM-80KM-SM optical module products, which can support 10G Ethernet transmission of 80KM in single-mode fiber, Moduletek Laboratory has tested the sample of this product, which is convenient for you to know more about the product's performance indexes and the effect of. On an optical network, a sender needs to convert electrical signals into optical signals before sending them to a receiver, and the receiver needs to convert received optical signals into electrical signals. The SFP-FE-SX-MM1310 (part number: 02315233) is a Huawei-certified 100M optical module. However, the Vendor Name field displays the original manufacturer name, instead of HUAWEI.



## Huawei Fiber Optic Module Parameter Table

---



### How to View Optical Module Parameters

Using a Command If an optical module is installed in a running router, you can run the display transceiver command to view parameters of the optical module, including the center

### Classification and Specifications of HUAWEI

SFP transceivers support LC fiber connectors. eSFP: enhanced small form-factor pluggable. An eSFP module is an SFP module that supports monitoring of

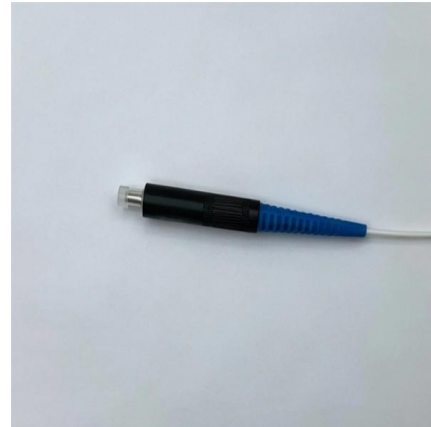


### Implementation Agreement for a 3.2Tb/s Co-Packaged (CPO) Module

ABSTRACT: This Implementation Agreement specifies key aspects and electro-optical-mechanical details of a 3.2Tb/s Co-Packaged Module encompassing optical and copper cable attach

### Huawei Technical Support

Discover how to view the serial number of an optical module with step-by-step guidance from Huawei Technical Support.



### **Fiber Optic Transceiver, SFP+, 1550nm, ER SMF 40km, 10G DDM, Huawei**

Fiber Optic Transceiver, SFP+, 1550nm, ER SMF 40km, 10G DDM, Huawei from L-com has same day shipment for domestic and International orders. Our portfolio includes coaxial cable assemblies,



### **Configuring Attributes for an Optical Interface**

After this command is configured on an interface, the interface will be in Down state if no optical module is installed on the interface or a single-fiber bidirectional optical module or high-speed



### **8 Pluggable Modules for Interfaces**

If an optical module is installed in a running device, you can run the display transceiver command to view parameters of the optical module, including the center wavelength, transmission distance, fiber





## Checking the Fiber Type

The fiber information is printed on the package. To query optical module information, run the display transceiver interface interface-type interface-number verbose command.

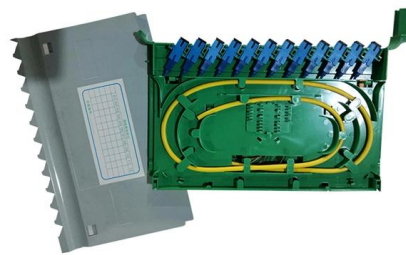


## Huawei Optical Module Common Models

Optical modules are important devices in fiber optic communication systems. Huawei Optical Module is manufactured by Huawei Technologies Co. and originated in Shenzhen. Huawei Technologies Co.,

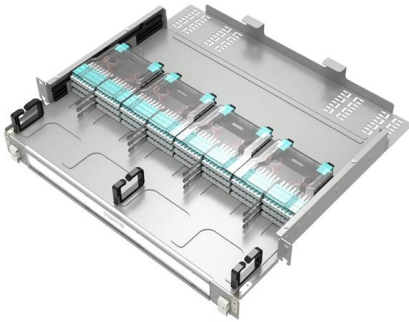
## Checking Parameter Settings of the Optical Modules

Check the parameter settings such as rate, wavelength, and transmission distance of the interconnected optical modules. Using the optical modules from the same vendor is recommended.



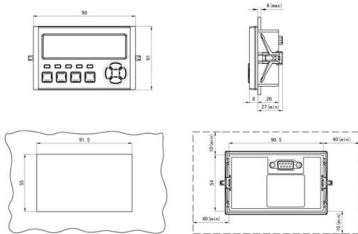
## 10 Gbit/s SFP+ Optical Module

The wavelength of these 10 Gbit/s SFP+ optical modules can be 850 nm, 1310 nm, or 1550 nm, and the transmission distance ranges from 0.3 km (0.19 mi.) to 80 km (49.71 mi.). Figure 1



## Installing Optical Transceivers and Connecting Optical Fibers

Before connecting optical fiber cables, read the following precautions: Do not overbend optical fibers, and the radius should not be shorter than 40 mm. Do not bundle the optical fibers too tight.



## How to View Optical Module Parameters

If an optical module is installed in a running router, you can run the display transceiver command to view parameters of the optical module, including the center wavelength, transmission distance, fiber types

## Common optical fiber connectors introduction

Views:24 Downloads:0 Author: Document ID:EKB1000020459 Optical fiber connector introduction Service Engineer: Hu Xiao June 24, 2010 Huawei Symantec Technologies





## Huawei OLT 5800 01-09 Optical and Electrical Module

Huawei OLT 5800 01-09 Optical and Electrical Module - Free download as PDF File (.pdf), Text File (.txt) or read online for free.

## Huawei XFP-10G-1550NM-80KM-SM Optical Module Sample Report

Huawei XFP-10G-1550NM-80KM-SM optical module supports 80KM link length on 10G standard single-mode fiber (SMF) G.652. The official key parameters and the physical appearance of



## Huawei Optical Switch View Optical Module Commands

Taking the Huawei 5700 series switches as an example, the commands to view optical module information are as follows:

## Huawei Technical Support

Learn how to display optical module information on Huawei devices using specific commands and understand the diagnostic details of optical modules.



## Huawei Data Center Switch Optical Transceiver Portfolio

Huawei Data Center Switch Optical Transceiver Portfolio QSFP28 MPO12 Connector Model



## Optical Modules in General-Purpose Computing Scenarios

Huawei offers a comprehensive portfolio of pluggable StarryLink optical modules for data center networks, with various models providing flexible plug-and-play solutions tailored to diverse interface



## How to View Optical Module Parameters

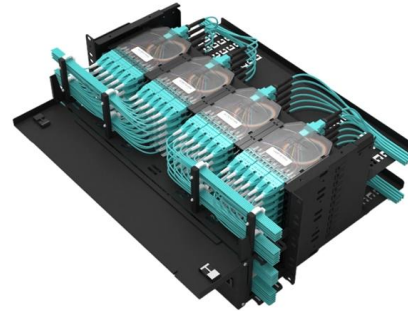
Using a Command If an optical module is installed in a running device, you can run the display transceiver command to view parameters of the optical module, including the center wavelength,





## Teach you to read the DDM information of the optical

The following picture is the optical module information queried on the Huawei switch, which is marked with the Chinese translation of the Optical



## 40Gbps QSFP+ Optical Modules

QSFP-40G-LR4 QSFP-40G-SDLC-PAM QSFP-40G-SR-BD (02311FPA) QSFP-40G-eSR4 QSFP-40G-iSR4 QSFP-40G-LX4 QSFP-40G-ER4 QSFP-40G-LR4-Lite QSFP-40G-LX4-MM QSFP-40G-eSDLC

## forum.huawei

We're sorry but web site doesn't work properly without JavaScript enabled. Please enable it to continue. Loading



## 01-10 OPTICAL MODULES

If an optical module is installed in a running device, you can run the display transceiver command to view parameters of the optical module, including the center wavelength, transmission distance, fiber



## Huawei Technical Support

This document provides technical details about 1Gbps eSFP Optical Modules, including specifications and support information.



## How to Know Optical Power SFP- Detail Link-Details & Port

Hello friends, Welcome to Technical Hakim! In this tutorial, we will learn how to verify port type, speed, link status, port optical rx and tx optics power, sfp

## HUAWEI-ETHERNET-OPTICMODULE- MIB Table View

Indicates the configured parameter table of a smart SFP optical module. It is used for querying and setting the configured parameters of a smart SFP optical module.





## How To Read Optical Module Information On Huawei Switches

The following uses the Moduletek SFP-10G-LR module connected to a Huawei S6700 switch as an example to introduce how to read information of the connected optical module on a Huawei switch.

## Contact Us

---

For datasheets, pricing, or custom telecom energy solutions, please visit:  
<https://koskolong.co.za>