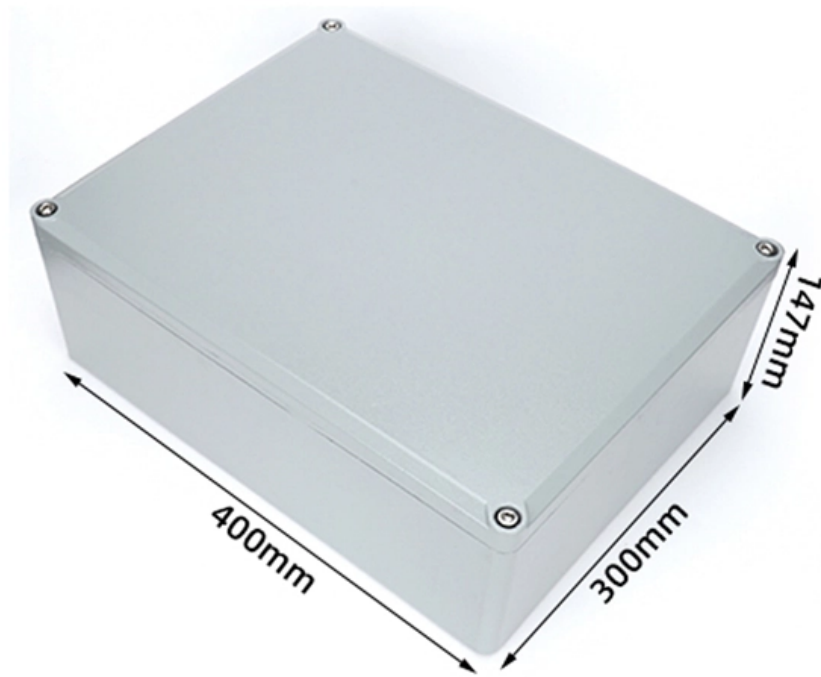




Adam Tas Corridor Energy

Huawei Fiber Optic Switch Tips





Huawei Fiber Optic Switch Tips



Connecting Second-Generation Hybrid Cable

That is, switch-side pigtails are used on the switch, and AP-side pigtails are used on the AP or RU. Before splicing, identify the pigtail types by labels on the cables. When connecting hybrid cables and

How Essential Is GPON Switch Huawei? Can Fiber-Optics Outpace

The battle between legacy copper networks and fiber-optic supremacy boils down to one device: the GPON Switch Huawei. As businesses and ISPs scramble to deliver gigabit speeds, Huawei's GPON



S Series Switches Stack Deployment Best Practices

S Series Switches Stack Deployment Best Practices This document describes the best practices for stack deployment, including device selection, deployment, networking deployment, stack setup

Huawei Fibre Switch: Invisible Game-Changer? Can Lightning-Fast

And could upgrading to Huawei's fibre switches actually future-proof your operations against AI,

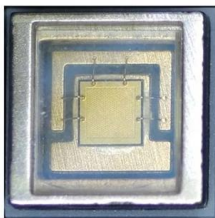


VR, and other bandwidth-hungry tech? Let's cut through the hype and explore how these



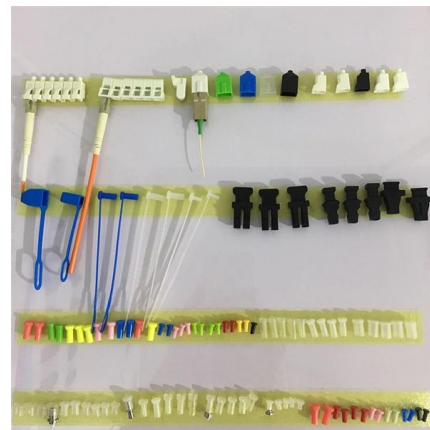
Network Switches , Huawei Enterprise

Huawei Ethernet Switches Turbocharge your enterprise network with high-performance, high-availability for resilient services and simplified management.



Huawei Fiber Switch: Speed Revolution? Can Lightning-Fast

Huawei's deterministic networking algorithms lock latency into tight bands, turning chaotic networks into precision instruments. Security also gets a fiber facelift. Tapping



Connecting Stack Cables

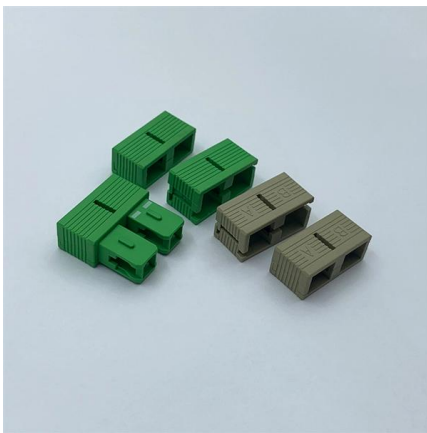
Select stack cables before connecting them. For details about the stack cables that apply to different ports on different switch models, see Stack Support and Version Requirements in the product





Connecting Second-Generation Hybrid Cable

Connecting Second-Generation Hybrid Cable Context For details related to precautions for using the second-generation hybrid cable (hybrid cable 2.0), see Assembling Second-Generation Hybrid



Configuring Attributes for an Optical Interface

CX320 Switch Module V100R001 Configuration Guide 14 Configuring Attributes for an Optical Interface This section describes how to configure attributes for an optical interface. Configuring Interface Split

Huawei Fiber Optic Switches in 2024: Beyond the CloudEngine Hype

When a Dubai data center operator discovered 37% lower latency using Huawei's "forgotten" OptiXtrans E6600 fiber switches compared to mainstream alternatives, it revealed



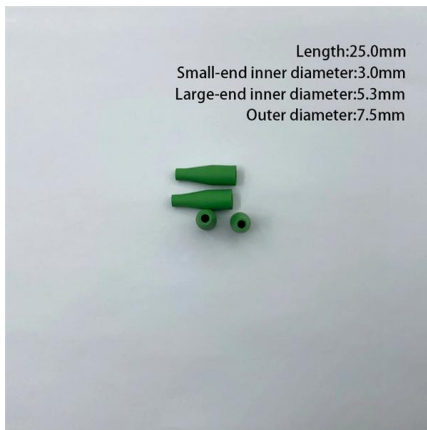
How can I set up the Internet for my new HUAWEI router on my computer

Learn about 'How can I set up the Internet for my new HUAWEI router on my computer'. Find all usage guide, troubleshooting tips and resources for your HUAWEI product.



Configuring Fibre Channel Switches (Applicable to Fibre Channel)

Four Fibre Channel switches are cascaded across active-active DCs, building a mirroring relationship between the storage systems in the two DCs. Domain IDs must be set to prevent ID conflicts on the



FAQs About Optical Modules

Description: Huawei switches must use Huawei-certified optical modules. Non-Huawei-certified optical modules cannot ensure transmission reliability and may affect service stability. Huawei is not

Enabling pass through in a Huawei optic router

Generally fiber optic connections use either plain fiber-Ethernet or more commonly GPON (which still carries Ethernet data), and Ethernet-to





Huawei HG8240 fiber modem

I'm in need of a gigabit Ethernet switch so I can connect two or three computers to the one cable coming into my room. I was going to get an actual switch, but now I was given the titular device for free so I



Configuring Fibre Channel Switches (Applicable to Fibre Channel)

Configuring Fibre Channel Switches (Applicable to Fibre Channel Connections) Fibre Channel switch configuration includes setting domain IDs, configuring the long-distance mode for links, and creating



Optical Module Solutions for Huawei S5700/S5720 Series Switches

This article summarizes several solutions for using optical modules with switches and common problems encountered during usage, along with specific solutions.

How To Switch Optical-Electrical Mode On Huawei

Take the Huawei AR5710S-S8T2X router as an example to understand how to switch the optical and electrical modes of the Combo interface of the Huawei



Introduction of Optical Modules on Huawei Switches

Check Optical Module Parameters: If an optical module is installed in a running switch, you can run the display transceiver command to view parameters of the



Optical fiber: the foundation of smart cities

And of all the connectivity methods available, optical fiber is the most environmentally friendly. Huawei's industry-leading solutions make it easier to



Optical Fiber

To connect a fiber, align the optical connector with the optical port and gently insert the optical fiber into the port. To remove a fiber, press the clip on the connector and pull the fiber out.





How to Master Huawei Switch Stacking: Best Practices and

Switch stacking is a cornerstone of modern network design, enabling simplified management, improved redundancy, and scalable bandwidth. Huawei's stacking technology (e.g.,



How to Use the XGSPON ONU Stick SFP+

If you have a router or switch with an SFP+ interface, such as the Ubiquiti Dream Machine Pro, Mikrotik CCR series, or an OPNsense device, the

Huawei 10G SFP+ Fiber Switch Price

Scan Huawei 10G SFP+ Fiber Switch Price, buy brand new Huawei switches with various types of payment. Fast delivery in 1-3 days. Live chat are supported to help.



Huawei Enterprise Support Community

We're sorry but web site doesn't work properly without JavaScript enabled. Please enable it to continue. Loading



How to View Optical Module Parameters

Using a Command If an optical module is installed in a running device, you can run the display transceiver command to view parameters of the optical module, including the center wavelength,



Huawei Fiber Optic Switches in 2024: Beyond the CloudEngine Hype

When a Dubai data center operator discovered 37% lower latency using Huawei's "forgotten" OptiXtrans E6600 fiber switches compared to mainstream alternatives, it revealed a critical truth: Huawei's fiber

Optical Fiber

AOC An active optical cable (AOC) is a fixed-length optical fiber with optical modules at both ends. It can be directly connected to an optical port on a device. In short-distance connection scenarios, AOCs





Configuring Fibre Channel Switches (Applicable to Fibre Channel)

Fibre Channel switch configuration includes setting domain IDs, configuring the long-distance mode for links, and creating zones.

Contact Us

For datasheets, pricing, or custom telecom energy solutions, please visit:
<https://koskolong.co.za>