



Adam Tas Corridor Energy

Huawei S5720-28P Fiber Optic Switch





Huawei S5720-28P Fiber Optic Switch

Huawei S5720-28P-LI-AC Switch 24x GE RJ45 4x SFP



The Huawei S5720-28P-LI-AC is a high-performance network switch featuring 24 Ethernet 10/100/1000 ports and 4 Gigabit SFP ports. It provides reliable AC

S5720-28P-LI-AC

S3700& S5700& S6700 Series S5720-28P-LI-AC: Access product manuals, HedEx documents, product images and visio stencils.



S5720-SI Series Next-generation Standard Gigabit Ethernet Switch

Product Overview The S5720-SI series switches (S5720-SI for short) are next-generation standard gigabit Layer 3 Ethernet switches based on new generation of high-performance hardware and



Huawei S5720-28P-PWR-LI-AC Switch 24x GE PoE+ 4x

Huawei S5720-28P-PWR-LI-AC enterprise switch with 24x GE PoE+ and 4x GE SFP, ideal for



campus and SMB access networks. Check live inventory and



Huawei S5720-S28P-PWR-LI-AC Switch Review: Real-World

Discover real-world insights on huawei s5720 28p pwr li ac managing poe-powered devices efficiently in low-outlet enterprises, offering reliable poe support, durable fanless design, smooth legacy

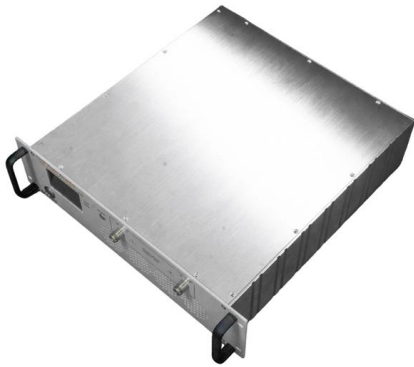
S5720-28P-PWR-LI-AC-Huawei S5700 Series Switches-HuaTenMax

S5720-28P-PWR-LI-AC is the Huawei 24 Ethernet 10/100/1000 ports, 4 Gig SFP, PoE+, 370W POE AC power support, overseas.



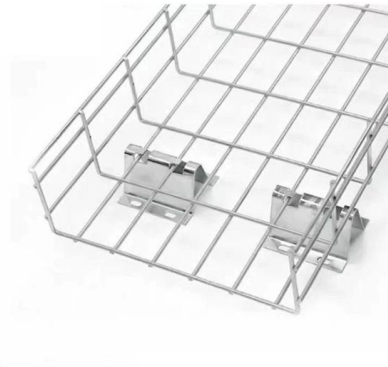
S5720-LI Series Simplified Gigabit Ethernet Switches

Introduction Building on next-generation, high-performance hardware and the Huawei Versatile Routing Platform (VRP), the S5720-LI series support intelligent stack (iStack), flexible Ethernet networking,



S5720-EI Series Switches

S5720-EI series enhanced GE access switches offer 10 GE ports and QoS features to provide low-latency forwarding for enterprise campus networks. Learn more.



S5720-28P-PWR-LI-AC

Switches support a maximum of 128 GB USB flash drives. The S5720-28P-PWR-LI-AC has similar indicators to those of the S5720-28X-PWR-LI-AC. For details, see Indicator Description. The S5720

S5720-28P-LI-AC

The S5720-28P-LI-AC has similar indicators to those of the S5720-28X-PWR-LI-AC, except that the S5720-28P-LI-AC does not have a PoE mode indicator. For details, see Indicator Description.



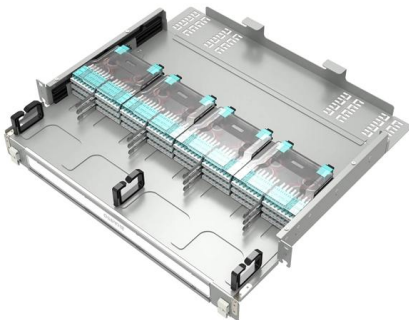
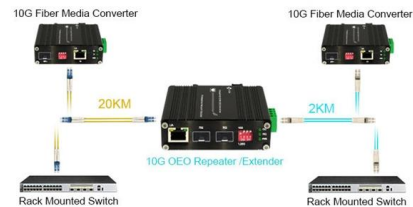


S5720-28P-SI-AC

The S5720-28P-SI-AC has similar indicators to those on the S5720-52X-PWR-SI-AC, except that the S5720-28P-SI-AC does not have a PoE mode indicator. For details, see Indicator Description.

Huawei S5720-28P-LI-AC PN:98010768 Price Configuration Parameter

In summary, the Huawei S5720 28P LI AC is a robust switch that combines high speed connectivity with advanced network management features, making it an excellent choice for businesses looking to



Huawei S5720-28P-PWR-LI-AC Switch 24x GE PoE+ 4x SFP Price

Download the Huawei S5720-28P-PWR-LI-AC switch datasheet. View specs, PoE+ details, performance, and installation support from acs.

S5720-SI Series Standard Gigabit Ethernet Switches

The S5720-SI series switches are standard Layer 3 Gigabit Ethernet switches that provide flexible full gigabit access and cost-effective fixed GE ports and 10GE uplink ports.





HUAWEI S5720-SI Series Switches Datasheet (Detailed)



S5720-SI Datasheet (Detailed Version) fS5720-SI Datasheet (Detailed Version) 1 Introduction Huawei S5720 series Ethernet switches are next-generation energy

S5720-28P-PWR-LI-AC Datasheet Overview

Overview S5720-28P-PWR-LI-AC is the Huawei 24 Ethernet 10/100/1000 ports, 4 Gig SFP, PoE+, 370W POE AC power support, overseas.

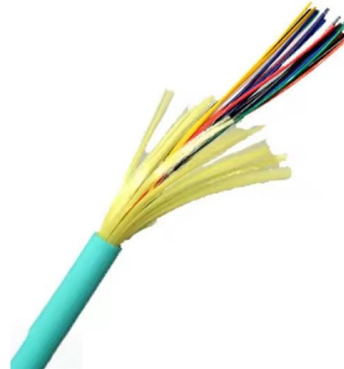


S5720-LI Series Simplified Gigabit Ethernet Switches

One S5720-LI switch can connect to multiple aggregation switches through multiple links, significantly improving reliability of access devices. The S5720-LI supports Ethernet OAM (IEEE

S5720-28P-SI-AC

S3700& S5700& S6700 Series S5720-28P-SI-AC: Access product manuals, HedEx documents, product images and visio stencils.



S5720-SI Datasheet (Detailed Version)

S5720-SI Datasheet (Detailed Version) S5720-SI Datasheet (Detailed Version) 1 Introduction Huawei S5700 series Ethernet switches (S5700 for short) are next-generation energy-saving Gigabit



S5720-HI Datasheet (Detailed Version)

S5720-HI Datasheet (Detailed Version) S5720-HI Datasheet (Detailed Version) 1 Introduction Huawei S5720 series Ethernet switches (S5720 for short) are next-generation energy-saving Gigabit



Huawei S5720S-28P-LI-AC (24 Ethernet 10/100/1000 ports, 4 Gig)

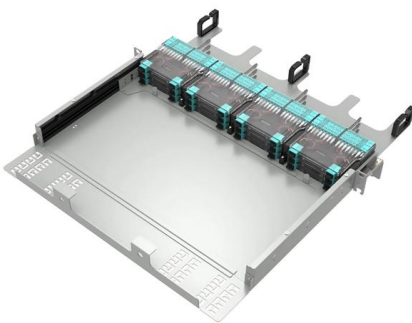
In summary, the Huawei S5720S 28P LI AC is an enterprise level managed switch with a mix of 24 Gigabit Ethernet ports and 4 Gigabit SFP ports, supporting a transmission rate of up to 1000 Mbps. It





S5720-28P-PWR-LI-AC

S3700& S5700& S6700 Series S5720-28P-PWR-LI-AC: Access product manuals, HedEx documents, product images and visio stencils.



S5720-LI

S5720-12TP-LI-AC S5720-12TP-PWR-LI-AC
S5720-28TP-LI-AC S5720-28TP-PWR-LI-AC
S5720-28TP-PWR-LI-ACL S5720-28P-LI-AC
S5720-28P-PWR-LI-AC S5720-52P-LI-AC
S5720-52P-PWR-LI

S5720S-28P-LI-AC

It offers 24 10/100/1000BASE-T ports and 4 Gigabit SFP uplink ports, providing



S5720-28X-PWR-SI-AC

If the optical port, no matter in Up or Down state, has an optical module installed, the optical port is still used for data switching when the electrical port has an Ethernet cable connected.



Contact Us

For datasheets, pricing, or custom telecom energy solutions, please visit:
<https://koskolong.co.za>